

BOUCLE



342



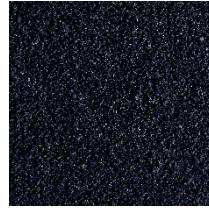
343



346

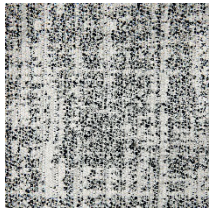


344



345

PIOZZANO



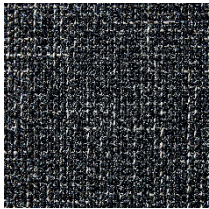
993-AJ

PUNTINO



996-PW

QAUS



993-AI

BOUCLE

EN

Composition: 34% Viscose, 33% Polyacrylic, 17% Wool, 8% Polyester, 4% Linen, 4% Cotton
Maintenance: Vacuum regularly or ① professional Dry-clean
Abrasion Resistance: 50.000 Martindale cycles

PIOZZANO

EN

Composition: 78% Cotton, 22% Polyester
Maintenance: Vacuum regularly or ① professional Dry-clean
Abrasion resistance: 30.000 Martindale cycles

PUNTINO

EN

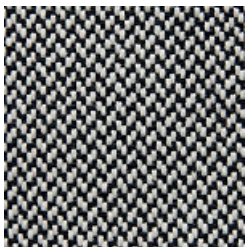
Composition: 42% Viscose, 32% Linen, 11% Polyester, 9% Cotton, 6% Polyamide
Maintenance: Vacuum regularly or ① professional Dry-clean
Abrasion Resistance: 100.000 Martindale cycles

QAUS

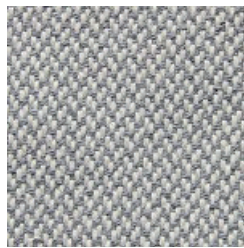
EN

Composition: 37% Polyester, 21% Polyacrylic, 19% Viscose, 14% Cotton, 8% Linen, 1% Polyamide
Maintenance: Vacuum regularly or ① professional Dry-clean
Abrasion resistance: 40.000 Martindale cycles

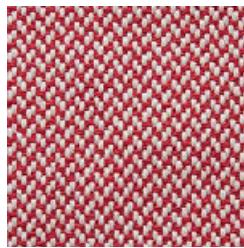
CENTO



470



471



472

CENTO

EN

Composition: 85% Cotton, 15% Polyester
Maintenance: Vacuum regularly or professional Dry-clean
Abrasion Resistance: 35.000 Martindale cycles
Flammability: EN 1021 part 1&2

DE

Zusammensetzung: 85% Baumwolle, 15% Polyester
Reinigung: Regelmässig staubsaugen. Professionelle Trockenreinigung
Scheuerfestigkeit: 35.000 Martindale
Feuerschutz: EN 1021 part 1&2

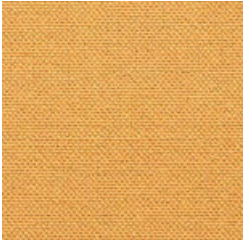
FR

Composition: 85% Coton, 15% Polyester
Nettoyage: Aspirer régulièrement. Nettoyage á sec professionnel
Résistance á l'abrasion: 35.000 cycles Martindale
Normes au feu: EN 1021 source d'ignition 1&2

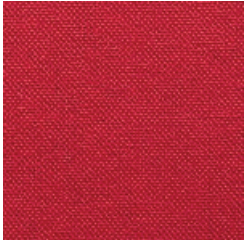
DK

Materiale: 85% Bomuld, 15% Polyester
Rengøring: Støvsug regelmæssigt eller professionel rens
Slidstyrke: 35.000 Martindale
Flammesikring: EN 1021 part 1&2

ECO COTTON



512



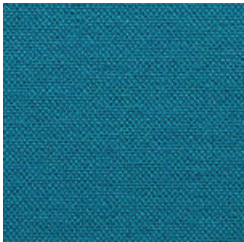
513



516



517



515



518



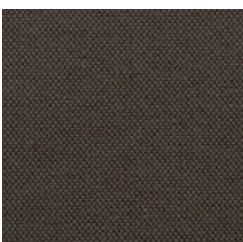
514



522



529 (511)



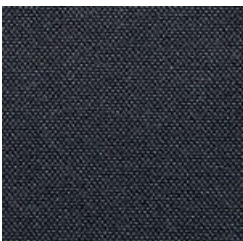
523



519



520



521

ECO COTTON

EN

Composition: 75% Cotton, 20% Poly Acrylic, 5% Other Fibers
Maintenance: Vacuum regularly or professional Dry-clean
Abrasion Resistance: 40.000 Martindale cycles
Flammability: EN 1021 part 1

DE

Zusammensetzung: 75% Baumwolle, 20% Poly Akryl, 5% Andere Faser
Reinigung: Regelmässig staubsaugen. Professionelle Trockenreinigung
Scheuerfestigkeit: 40.000 Martindale
Feuerschutz: EN 1021 part 1

FR

Composition: 75% Coton, 20% Polyacryl, 5% Autres fibres
Nettoyage: Aspirer régulièrement. Nettoyage à sec professionnel
Résistance à l'abrasion: 40.000 cycles Martindale
Normes au feu: EN 1021 source d'ignition 1

DK

Materiale: 75% Bomuld, 20% Poly Akryl, 5% Andre Fibre
Rengøring: Støvsug regelmæssigt eller professionel rens
Slidstyrke: 40.000 Martindale
Flammesikring: EN 1021 part 1

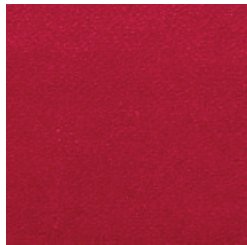
FELT



624



588



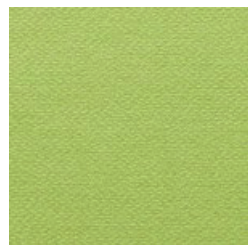
622



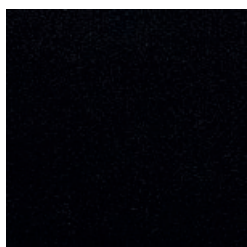
629



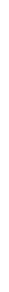
581



579



636



FELT

EN

Composition: 80% Wool, 20% Polyamide
Maintenance: Vacuum regularly or professional Dry-clean
Abrasion Resistance: 90.000 Martindale cycles
Flammability: EN 1021 part 1&2
BS 5852-1: 1979

DE

Zusammensetzung: 80% Wolle, 20% Polyamid
Reinigung: Regelmässig staubsaugen. Professionelle Trockenreinigung
Scheuerfestigkeit: 90.000 Martindale
Feuerschutz: EN 1021 part 1&2
BS 5852-1: 1979

FR

Composition: 80% Laine, 20% Polyamide
Nettoyage: Aspirer régulièrement. Nettoyage á sec professionnel
Résistance á l'abrasion: 90.000 cycles Martindale
Normes au feu: EN 1021 source d'ignition 1&2
BS 5852-1: 1979

DK

Materiale: 80% Uld, 20% Polyamid
Rengøring: Støvsug regelmæssigt eller professionel rens
Slidstyrke: 90.000 Martindale
Flammesikring: EN 1021 part 1&2
BS 5852-1: 1979

FELT MELANGE



612



642



640



650



641



652



858



651



582



846



859



847



855



848



619



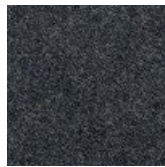
849



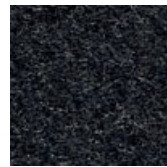
635



620



623



610

FELT MELANGE

EN

Composition: 70% Wool, 25% Polyamide, 3% Acrylic, 2% Polyester
Maintenance: Vacuum regularly or professional Dry-clean
Abrasion Resistance: 90.000 Martindale cycles
Flammability: EN 1021 part 1&2
BS 5852-1: 1979

DE

Zusammensetzung: 70% Wolle, 25% Polyamid, 3% Akryl, 2% Polyester
Reinigung: Regelmässig staubsaugen. Professionelle Trockenreinigung
Scheuerfestigkeit: 90.000 Martindale
Feuerschutz: EN 1021 part 1&2
BS 5852-1: 1979

FR

Composition: 70% Laine, 25% Polyamide, 3% Acryl, 2% Polyester
Nettoyage: Aspirer régulièrement. Nettoyage á sec professionnel
Résistance á l'abrasion: 90.000 cycles Martindale
Normes au feu: EN 1021 source d'ignition 1&2
BS 5852-1: 1979

DK

Materiale: 70% Uld, 25% Polyamide, 3% Akryl, 2% Polyester
Rengøring: Støvsug regelmæssigt eller professionel rens
Slidstyrke: 90.000 Martindale
Flammesikring: EN 1021 part 1&2
BS 5852-1: 1979

FELT MELANGE New colours



296



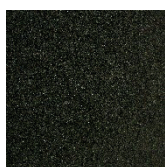
298



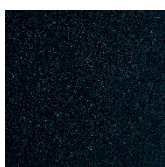
297



293



294



295



292



289



300



299

FELT MELANGE

EN

Composition: 70% Wool, 25% Polyamide, 3% Acrylic, 2% Polyester
Maintenance: Vacuum regularly or professional Dry-clean
Abrasion Resistance: 90.000 Martindale cycles
Flammability: EN 1021 part 1&2
BS 5852-1: 1979

DE

Zusammensetzung: 70% Wolle, 25% Polyamid, 3% Akryl, 2% Polyester
Reinigung: Regelmässig staubsaugen. Professionelle Trockenreinigung
Scheuerfestigkeit: 90.000 Martindale
Feuerschutz: EN 1021 part 1&2
BS 5852-1: 1979

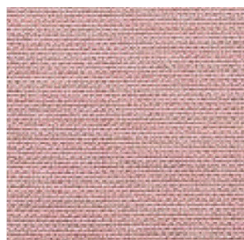
FR

Composition: 70% Laine, 25% Polyamide, 3% Acryl, 2% Polyester
Nettoyage: Aspirer régulièrement. Nettoyage á sec professionnel
Résistance á l'abrasion: 90.000 cycles Martindale
Normes au feu: EN 1021 source d'ignition 1&2
BS 5852-1: 1979

DK

Materiale: 70% Uld, 25% Polyamide, 3% Akryl, 2% Polyester
Rengøring: Støvsug regelmæssigt eller professionel rens
Slidstyrke: 90.000 Martindale
Flammesikring: EN 1021 part 1&2
BS 5852-1: 1979

GRIFFON



995-TH



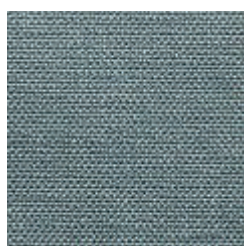
995-FF



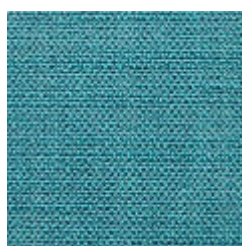
995-TE



830



501



502



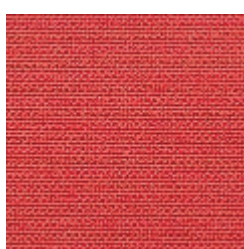
503



504



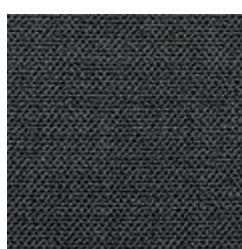
505



995-TD



506



507



995-FE

GRIFFON

EN

Composition: 62% Poly Acrylic, 27% Polyester, 11% Polypropylene
Maintenance: Vacuum regularly or professional Dry-clean
Abrasion Resistance: 30.000 Martindale cycles

DE

Zusammensetzung: 62% Poly Acryl, 27% Polyester, 11% Polypropylene
Reinigung: Regelmässig staubsaugen. Professionelle Trockenreinigung
Scheuerfestigkeit: 30.000 Martindale

FR

Composition: 62% Poly Acrylique, 27% Polyester, 11% Polypropylène
Nettoyage: Aspirer régulièrement. Nettoyage á sec professionnel
Résistance á l'abrasion: 30.000 cycles Martindale

DK

Materiale: 62% Poly akryl, 27% Polyester, 11% Polypropylene
Rengøring: Støvsug regelmæssigt eller professionel rens
Slidstyrke: 30.000 Martindale

MAREMOSSO



995-KB



534



995-KC



536



532



531



535

MAREMOSSO

EN

Composition: 54% Polyester, 26% Cotton, 20% Linnen
Maintenance: Vacuum regularly or professional Dry-clean
Abrasion Resistance: 25.000 Martindale cycles

DE

Zusammensetzung: 54% Polyester, 26% BAumwolle, 20% Linnen
Reinigung: Regelmässig staubsaugen. Professionelle Trockenreinigung
Scheuerfestigkeit: 25.000 Martindale

FR

Composition: 54% Polyester, 26% Coton, 20% Linnen
Nettoyage: Aspirer régulièrement. Nettoyage á sec professionnel
Résistance á l'abrasion: 25.000 cycles Martindale

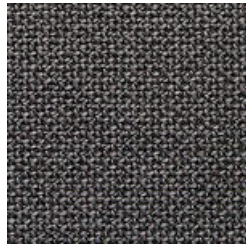
DK

Materiale: 54% Polyester, 26% Bomuld, 20% Linnen
Rengøring: Støvsug regelmæssigt eller professionel rens
Slidstyrke: 25.000 Martindale

NORDIC



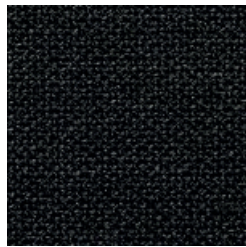
485



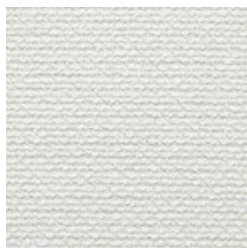
480



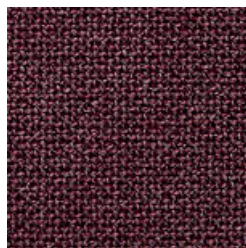
483



484



482



481

NORDIC

EN

Composition: 38% Cotton, 24% Acrylic, 18% Viscose, 12% Wool, 6% Polyester, 2% Polyamid
Maintenance: Vacuum regularly or professional Dry-clean
Abrasion Resistance: 62.000 Martindale cycles
Flammability: EN 1021 part 1&2

DE

Zusammensetzung: 38% Baumwolle, 24% Akryl, 18% Viscose, 12% Wolle, 6% Polyester, 2% Polyamid
Reinigung: Regelmässig staubsaugen. Professionelle Trockenreinigung
Scheuerfestigkeit: 62.000 Martindale
Feuerschutz: EN 1021 part 1&2

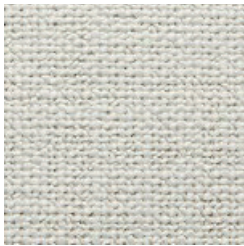
FR

Composition: 38% Coton, 24% Acryl, 18% Viscose, 12% Laine, 6% Polyester, 2% Polyamid
Nettoyage: Aspirer régulièrement. Nettoyage á sec professionnel
Résistance á l'abrasion: 62.000 cycles Martindale
Normes au feu: EN 1021 part 1&2

DK

Materiale: 38% Bomuld, 24% Akryl, 18% Viscose, 12% Uld, 6% Polyester, 2% Polyamid
Rengøring: Støvsug regelmæssigt eller professionel rens
Slidstyrke: 62.000 Martindale
Flammesikring: EN 1021 part 1&2

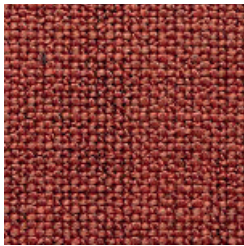
TUNDRA



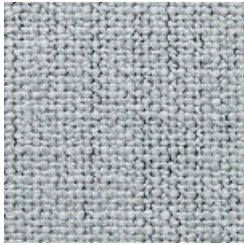
996-EF



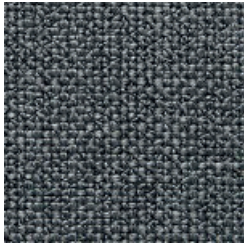
996-EC



478



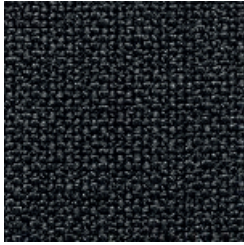
479



476



474



475

TUNDRA

EN

Composition: 42% Viscose, 38% Cotton, 14% Poly acrylic, 6% Polyester
Maintenance: Vacuum regularly or professional Dry-clean
Abrasion Resistance: 30.000 Martindale cycles
Flammability: EN 1021 part 1&2

DE

Zusammensetzung: 42% Viscose, 38% Baumwolle, 14% Poly Akryl, 6% Polyester
Reinigung: Regelmässig staubsaugen. Professionelle Trockenreinigung
Scheuerfestigkeit: 30.000 Martindale
Feuerschutz: EN 1021 part 1&2

FR

Composition: 42% Viscose, 38% Coton, 14% Poly acryl, 6% Polyester
Nettoyage: Aspirer régulièrement. Nettoyage á sec professionnel
Résistance á l'abrasion: 30.000 cycles Martindale
Normes au feu: EN 1021 part 1&2

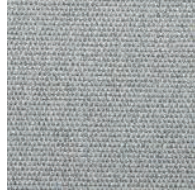
DK

Materiale: 42% Viscose, 38% Bomuld, 14% Poly akryl, 6% Polyester
Rengøring: Støvsug regelmæssigt eller professionel rens
Slidstyrke: 30.000 Martindale
Flammesikring: EN 1021 part 1&2

VISION



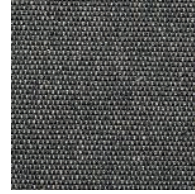
457



445



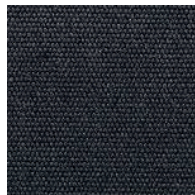
526



439



443



449



399



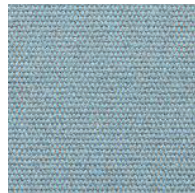
446



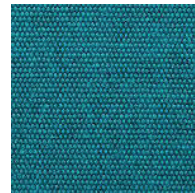
395



452



442



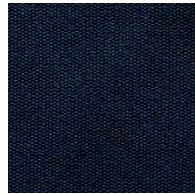
455



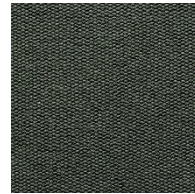
450



441



527



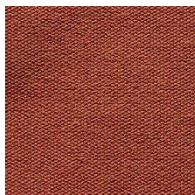
528



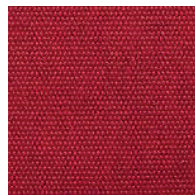
396



454



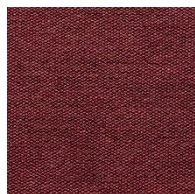
397



448



453



398

VISION

EN

Composition:	85% Cotton, 15% Polyester
Maintenance:	Vacuum regularly or professional Dry-clean
Abrasion Resistance:	35.000 Martindale cycles
Flammability:	EN 1021 part 1

DE

Zusammensetzung:	85% Baumwolle, 15% Polyester
Reinigung:	Regelmässig staubsaugen. Professionelle Trockenreinigung
Scheuerfestigkeit:	35.000 Martindale
Feuerschutz:	EN 1021 part 1

FR

Composition:	85% Coton, 15% Polyester
Nettoyage:	Aspirer régulièrement. Nettoyage á sec professionnel
Résistance á l'abrasion:	35.000 cycles Martindale
Normes au feu:	EN 1021 part 1

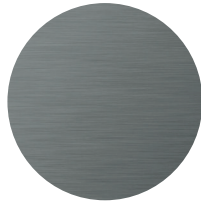
DK

Materiale:	85% Bomuld, 15% Polyester
Rengøring:	Støvsug regelmæssigt eller professionel rens
Slidstyrke:	35.000 Martindale
Flammesikring:	EN 1021 part 1

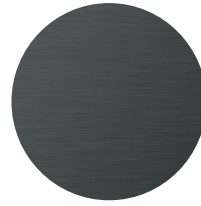
STEEL



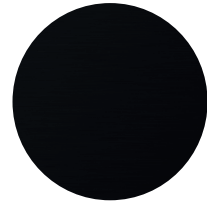
WHITE RAL 9016



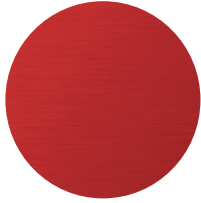
ALU RAL 9006



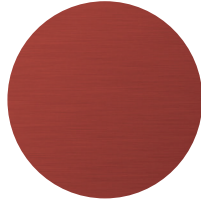
GREY RAL 7043



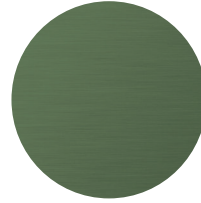
BLACK RAL 9005



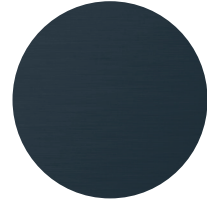
PURE RED RAL 3028



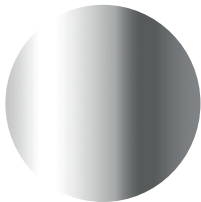
CORAL RED RAL 3016



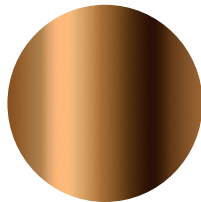
GREEN RAL 6011



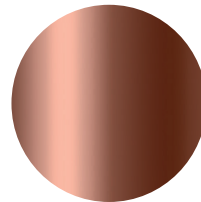
HAGUE BLUE RAL 5008



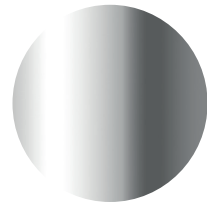
STAINLESS STEEL



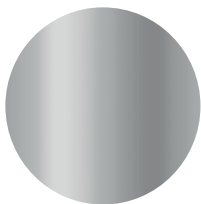
BRASS



COPPER



CHROME



ALUMINUM POLISHED

WOOD



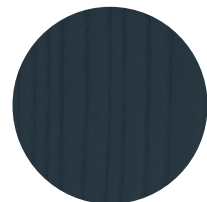
ASH NATURAL



WHITE PAINTED



BLACK PAINTED



HAGUE BLUE



WALNUT