

mobitec

SINCE 1990

Ambiance Bureau

RETAIL / CONTRACT

SOTEGA

CL5



Composition 73% PVC / 2% PU / 25% CO

Martindale Turns 51.000

Fastness to Light 4-5

Fabric Width +/- 140cm

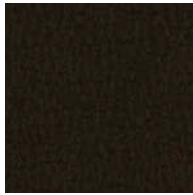
Water and Stainrepellant finish No

UK approved No

Cleaning Instructions Clean with water



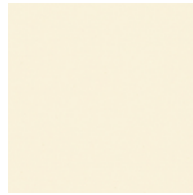
BLACK



ANTHRACITE



GREY



WHITE



BROWN



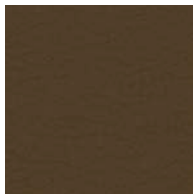
MOKKA



WALNUT



TAUPE



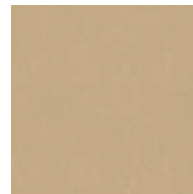
CENDRE



DAIM



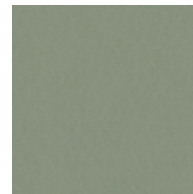
MASTIC



BEIGE



LIME



AQUA



PETROL



OCEAN



CARMINE



RED



COGNAC

mobitec

SINCE 1990

Ambiance Bureau

RETAIL ONLY

OTELLO

CL5



Composition 72% PL / 28% PP

Martindale Turns 92.000

Fastness to Light 4-5

Fabric Width +/- 140cm

Water and Stainrepellant finish No

UK approved No

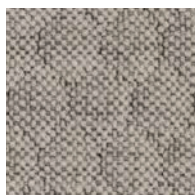
Cleaning Instructions



ANTHRACITE



GREY



WHITE



TAUPE



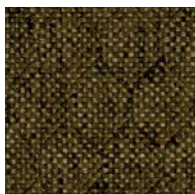
SAND



BEIGE



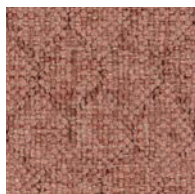
FOREST



GREEN



MINT



ROSE

mobitec

SINCE 1990

Ambiance Bureau

RETAIL / CONTRACT

HIP HOP

CL2



Composition 100% PL

Martindale Turns 100.000

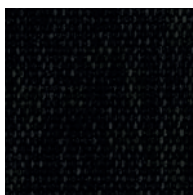
Fastness to Light 5

Fabric Width +/- 140cm

Water and Stainrepellant finish Yes

UK approved No

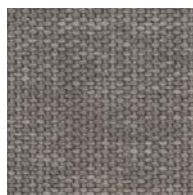
Cleaning Instructions



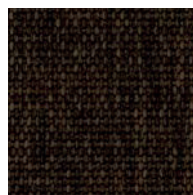
ANTHRACITE



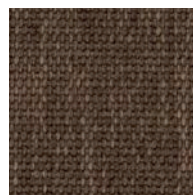
GREY



SILVER



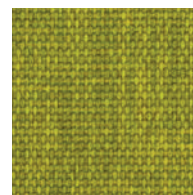
BROWN



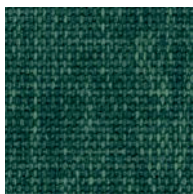
CACAO



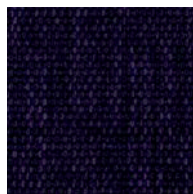
BEIGE



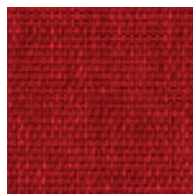
LIME



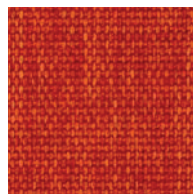
TURQUOISE



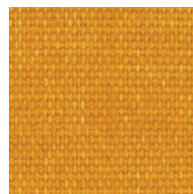
VIOLET



RED



ORANGE



YELLOW

mobitec

SINCE 1990

Ambiance Bureau

RETAIL / CONTRACT

TAMPA

CL3



Composition 100% PL


Martindale Turns 45.000

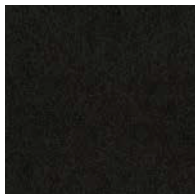
Fastness to Light 3-4

Fabric Width +/- 140cm

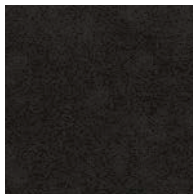
Water and Stainrepellant finish No

UK approved No

Cleaning Instructions 



ANTHRACITE



GREY



CACAO



TAUPE



NATURE

mobitec

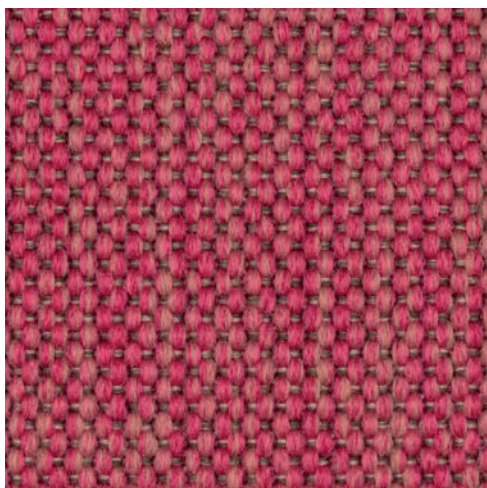
SINCE 1990

Ambiance Bureau

RETAIL / CONTRACT

BERRY

CL4



Composition 100% PP

Martindale Turns 45.000

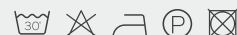
Fastness to Light ≥ 5

Fabric Width +/- 140cm

Water and Stainrepellant finish EasyClean

UK approved No

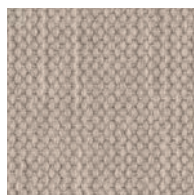
Cleaning Instructions



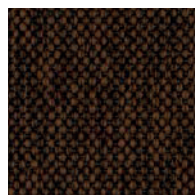
ANTHRACITE



MOUSE



SILVER



CACAO



TAUPE



SAND



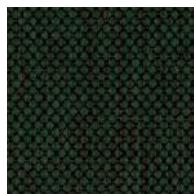
BEIGE



GREEN



LINDEN



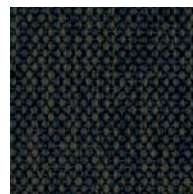
FOREST



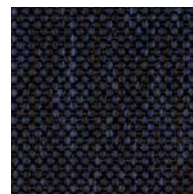
JADE



AQUA



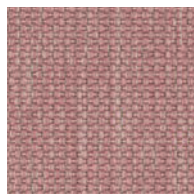
DUCK



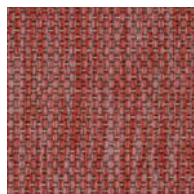
MARINE



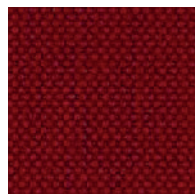
FUCHSIA



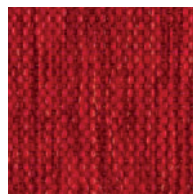
ROSE



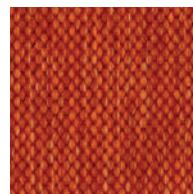
PINK



RUBIS



RED



ORANGE



YELLOW



mobitec

SINCE 1990

Ambiance Bureau



RETAIL / CONTRACT

CAPRI

CL5



Composition	8% PL / 92% PVC
Martindale Turns	100.000
Fastness to Light	5-6
Fabric Width	+/- 140cm
Water and Stainrepellant finish	No
UK approved	Yes
Fire Norm EN:	YES / EN 1021/1-2
Fire Norm UK:	YES / BS 5852/1-2
Cleaning Instructions	Clean with water



GREY



BROWN



CHOCOLATE



COFFEE



MASTIC



TAUPE



BEIGE

mobitec

SINCE 1990

Ambiance Bureau

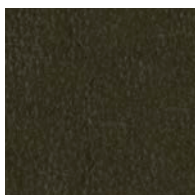
RETAIL ONLY

TOGO

3



Composition	Nubuck leather
Martindale Turns	-
Fastness to Light	-
Fabric Width	-
Water and Stainrepellant finish	-
UK approved	-
Cleaning Instructions	-



ANTHRACITE



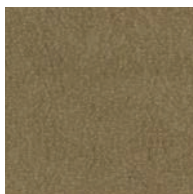
BROWN



WALNUT



COGNAC



TAUPE

mobitec

WE CREATE MOMENTS OF WELL-BEING SINCE 1990

Ambiance Bureau

RETAIL & CONTRACT

MONTANA

2



Composition Real neat leather, rectified and pigmented

Martindale Turns -

Fastness to Light -

Fabric Width -

Water and Stainrepellant finish -

UK approved -

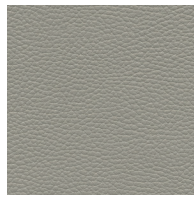
Cleaning Instructions -



IVORY



ECRU



BEIGE



DUNE



PEARL



DAIM



METEOR



TAUPE



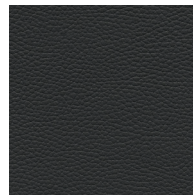
COGNAC



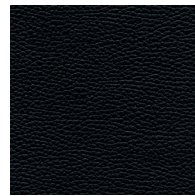
ROST



BRIQUE



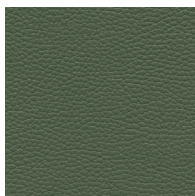
BROWN



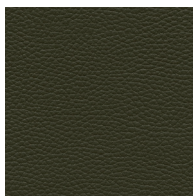
BLACK



LINDEN



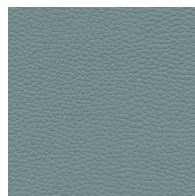
PINE



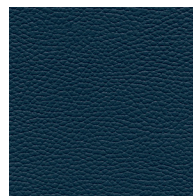
KHAKI



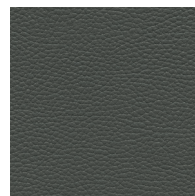
SUN



SKY



INDIGO



GREY

mobitec

SINCE 1990

Ambiance Bureau

RETAIL ONLY

LOME

3



Composition Aniline leather

Martindale Turns -

Fastness to Light -

Fabric Width -

Water and Stainrepellant finish -

UK approved -

Cleaning Instructions -



ANTHRACITE



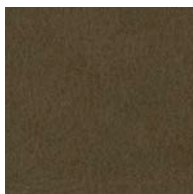
EBONY



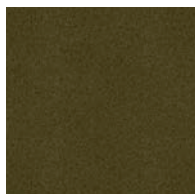
BROWN



COGNAC



GREY



OLIVE

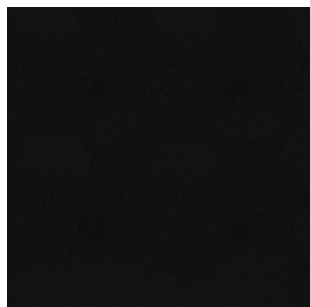
mobitec

SINCE 1990

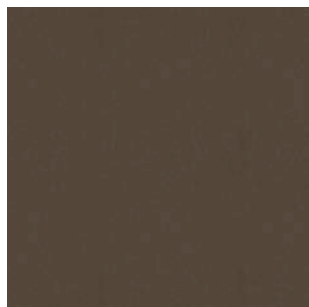
Ambiance Bureau

RETAIL & CONTRACT

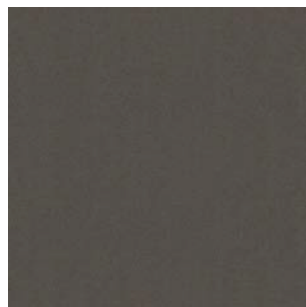
METAL COLOURS / COULEUR MÉTAL
METAAL-KLEUREN / METALL-FARBEN



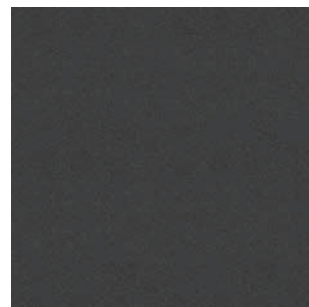
A01
BLACK



A08
BRONZE



A09
GRAPHIT



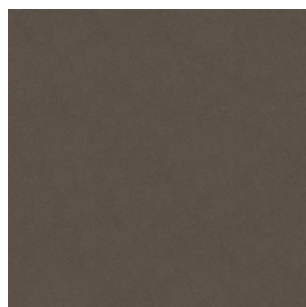
A12
CHARCOAL GREY



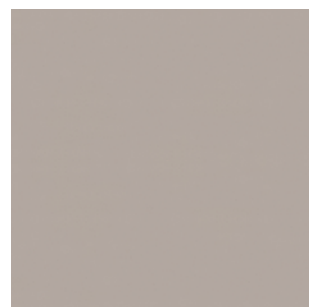
A15
STRUCTURED WHITE



A21
CHAMPAGNE



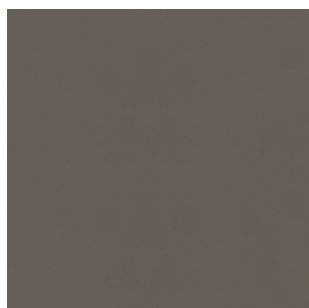
A22
TAUPE



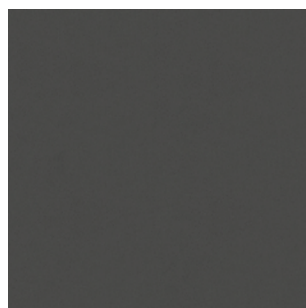
A25
COOL GREY



A26
ARIZONA BEIGE



A27
WARM GREY



A28
BASALT GREY



E

OAK / CHÊNE / EIKEN / EICHE

E

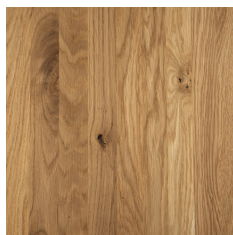
W

RUSTICAL OAK / CHÊNE RUSTIQUE / EIKEN RUSTIEK / WILDEICHE

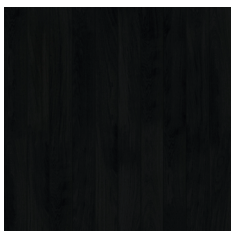
W



E01
natural oiled




W01
natural oiled




E10 (W10) 
blackened matte




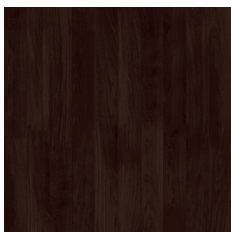
E11 (W11) 
natural matte




E23 (W23) 
tobacco matte




E24 (W24) 
ecru matte




E42 (W42) 
walnut look matte




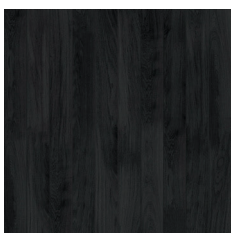
E44 (W44) 
light sand matte




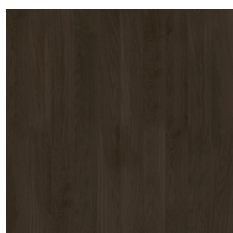
E45 (W45) 
dune matte



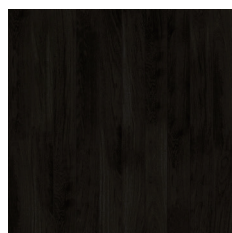
E46 (W46) 
warm umber matte




E47 (W47) 
graphite matte




E48 (W48) 
cappuccino matte



E49 (W49) 
carbone matte



E78 (W78) 
light chalked white matte



P

BEECH / HÊTRE / BEUKEN / BUCHE

P



P01
natural oiled



P11
natural matte



P42
dark walnut look matte



P43
grey matte



P44
walnut look matte



P45
light chalked white matte



P46
colonial matte



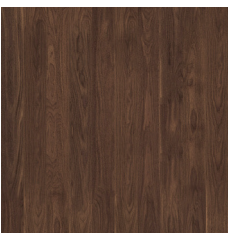
P47
ebony matte



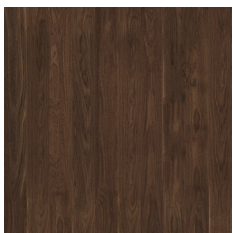
N

WALNUT / NOYER / NOTELAAR / NUSSBAUM

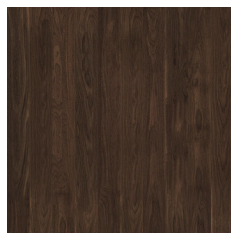
N



N01
natural oiled



N11
natural matte



N12
smoked matte



oiled / huilé
geolied / geölt



varnished / vernis
gelakt / lackiert



not available / pas disponible
niet beschikbaar / nicht verfügbar