

Sokoa

NUANCIER

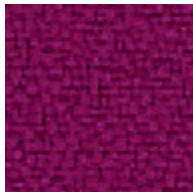
Ambiance Bureau

FABRICS. TAPIZADOS

B X-TREVIRA | Polyester



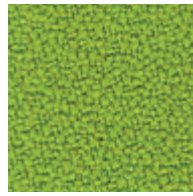
B 066 Rouille



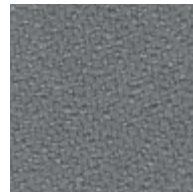
B 378 Magenta



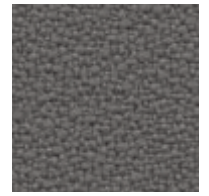
B 007 Turquoise



B 188 Vert pistache



B 094 Gris



B 081 Gris moyen



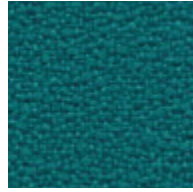
B 079 Rouge Pur



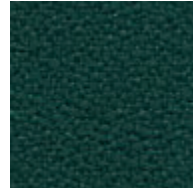
B 500 Violet



B 082 Bleu roy



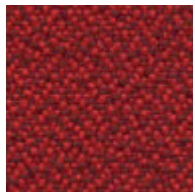
B 160 Vert canard



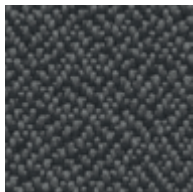
B 703 Vert bouteille



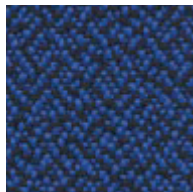
B 172 Gris anthracite



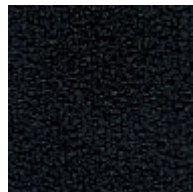
B 244 Rouge duo



B 289 Gris duo



B 268 Bleu duo

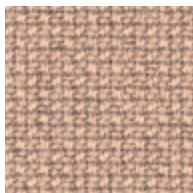


B 009 Noir

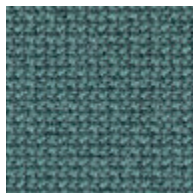
B+ CURA | 98% Polyester recyclé



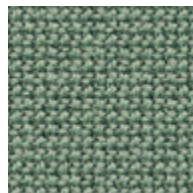
B+ CUL Lin



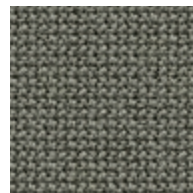
B+ CUR Rose



B+ CUH Horizon



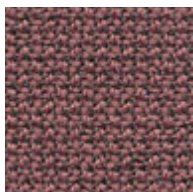
B+ CUE Eau



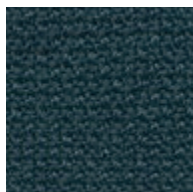
B+ CUB Béton



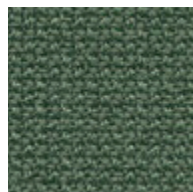
B+ CUM Moka



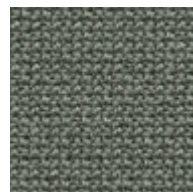
B+ CUF Framboise



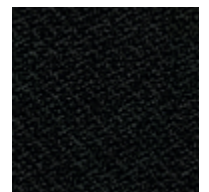
B+ CU2 Nuit



B+ CUS Sapin



B+ CUC Cendre

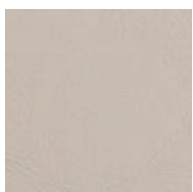


B+ CU3 Noir

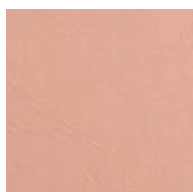
B+ EDEN FREE | PVC



B+ EFT Terre cuite



B+ EFS Seigle



B+ EFR Rose



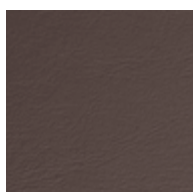
B+ EFA Azur



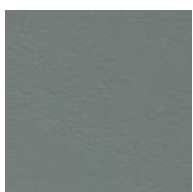
B+ EFJ Jade



B+ EFC Charbon



B+ EFM Moka



B+ EFB Béton



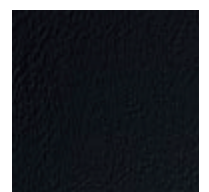
B+ EFG Groseille



B+ EF2 Nuit



B+ EFV Canard



B+ EF3 Noir

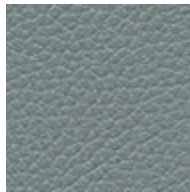
C GINKGO | PVC



C 80M Mirabelle



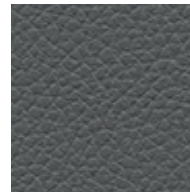
C 8CT Citrouille



C 8G1 Gris pierre



C 8A1 Aigue marine



C 80S Gris souris



C 8TE Terre



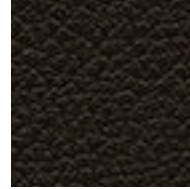
C 80G Groseille



C 8TH Menthe



C 8PT Pétrole



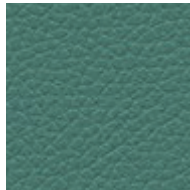
C 80C Chocolat



C 8SE Seigle



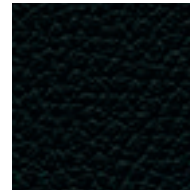
C 8QU Quetsche



C 8VE Vert

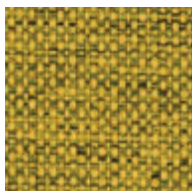


C 80N Bleu nuit

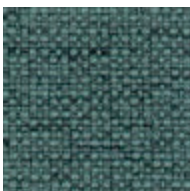


C 80A Anthracite

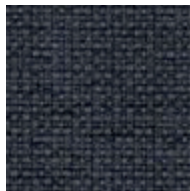
C NOMA | 100% Polyester recyclé



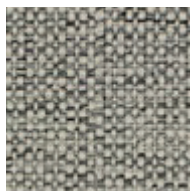
C NMJ Tournesol



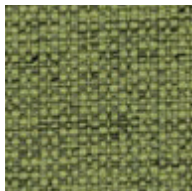
C NM0 Origan



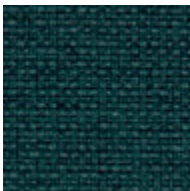
C NMG Gris



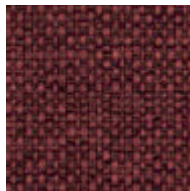
C NML Lin



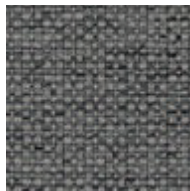
C NMA Amande



C NMV Jungle

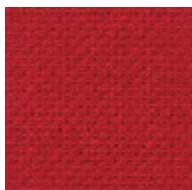


C NMN Lie de vin

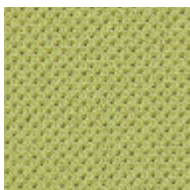


C NMS Gris souris

C ATLANTIC | Polyester



C AR0 Rouge



C AVA Vert amande



C AGS Gris



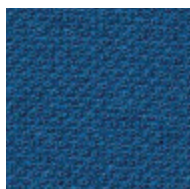
C AGR Gris moyen



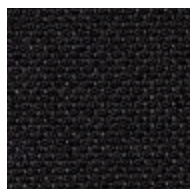
C ATE Terre



C AVC Chlorophylle



C ABL Bleu roy

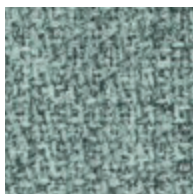


C AN0 Noir

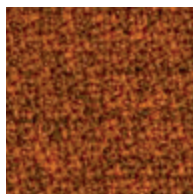
C STEP MELANGE | Polyester



C SMJ Moutarde



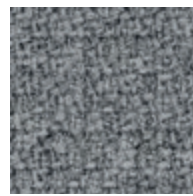
C SME Eau



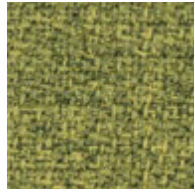
C SMP Paprika



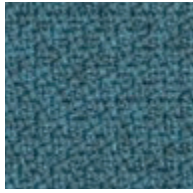
C SMS Sépia



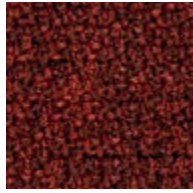
C SMB Béton



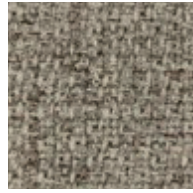
C SMT Tilleul



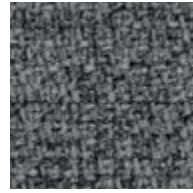
C SMH Horizon



C SM5 Grenat



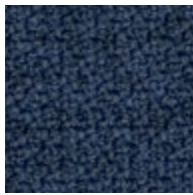
C SMA Avoine



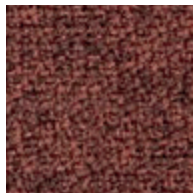
C SMC Cendre



C SMV Vert



C SMN Nuit



C SM1 Terracotta



C SM4 Chocolat

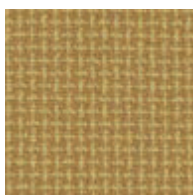


C SMG Gris foncé

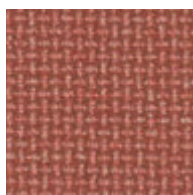
C BLEND | 100% Polyester recyclé



C BLV Vert



C BLJ Jaune



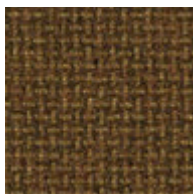
C BLC Corail



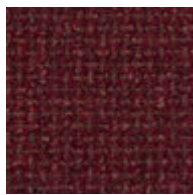
C BLG Gris



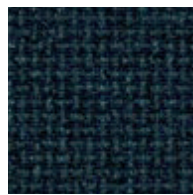
C BLT Terracotta



C BLZ Bronze

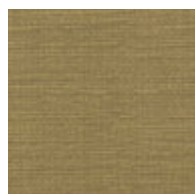


C BLX Bordeaux



C BLN Nuit

C NATURAL LINEN | PVC



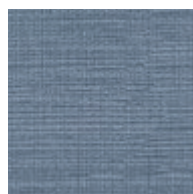
C NLL Tilleul



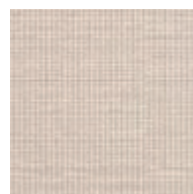
C NLJ Jaune



C NLR Rouge



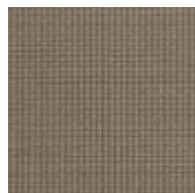
C NLB Tempête



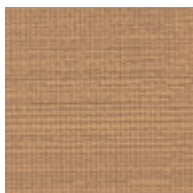
C NLC Crème



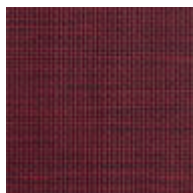
C NLG Gris



C NLT Terre



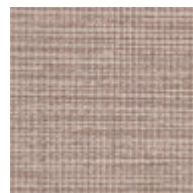
C NLZ Bronze



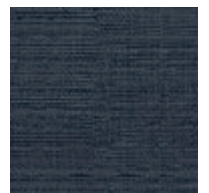
C NLF Famboise



C NLM Marine

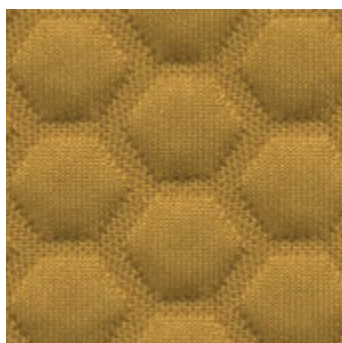


C NLS Sable



C NLN Charbon

C SPAZIO |  100% Polyester recyclé  



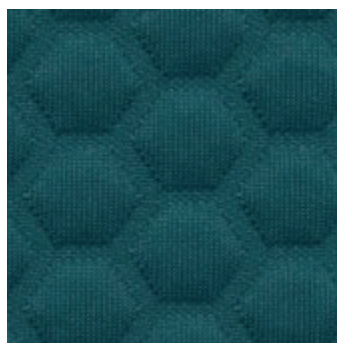
C SPJ

Jaune



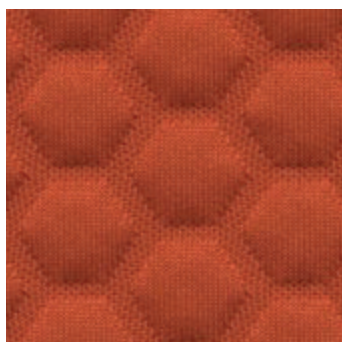
C SPL

Blanc



C SPV

Canard



C SPG

Orange



C SPT

Taupe



C SPR

Rose

C BOUCLE F.R. | Polyester  



C BCC

Crème



C BCT

Taupe



C BCM

Noisette



C BCJ

Jaune



C BCB

Brique



C BCV

Olive

D SELECT | Laine



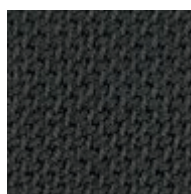
D SLB Bambou



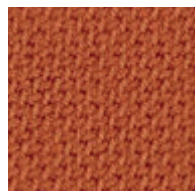
D SLR Rose poudré



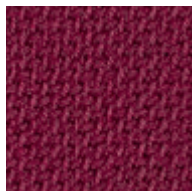
D SLV Eau



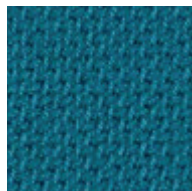
D SLG Gris



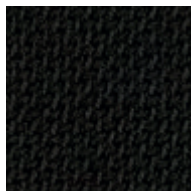
D SLC Citrouille



D SLF Framboise

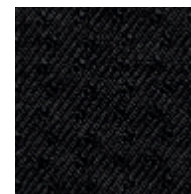


D SLP Pétrole



D SLN Noir

D 24N | Nylon

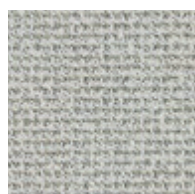


D 24N Noir

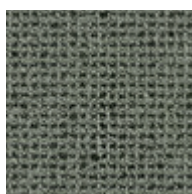
D GRAIN | 80% Polyester recyclé



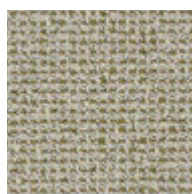
80% Polyester recyclé



D GRB Blanc gris



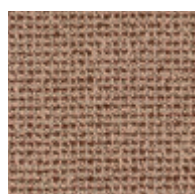
D GRG Gris



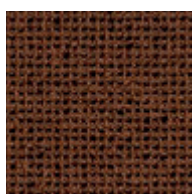
D GRL Lin



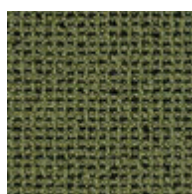
D GRJ Jaune



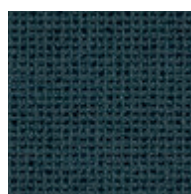
D GRC Corail



D GRT Terracotta



D GRV Vert



D GRN Nuit

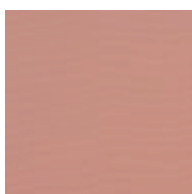
D SILVERTEX B1 | PVC



D VTC Crème



D VTP Paprika



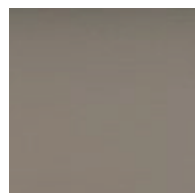
D VTR Rose



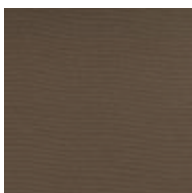
D VTB Ciel



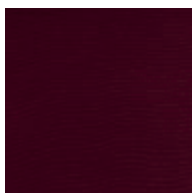
D VTG Gris



C VTL Lin



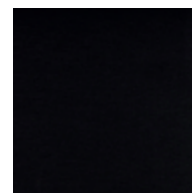
D VTT Taupe



D VTF Framboise

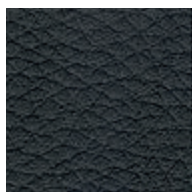


D VTV Canard



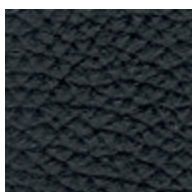
D VTN Charbon

B NAPEL | PVC



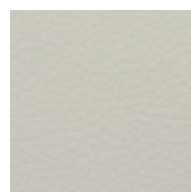
B NN0 Noir

E CUIR |



E CN0 Noir

H CUIR |



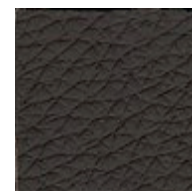
H CCR Blanc crème



H CTA Taupe



H CCA Caramel



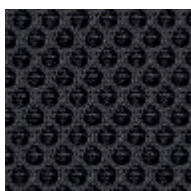
H CHL Chocolat

R/C*

RUNNER | 20% Polyester recyclé



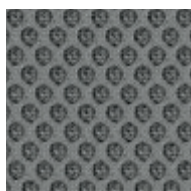
C R4E Beige



C R4G Gris foncé



C R4N Noir



C R4Q Gris moyen

* R/C*

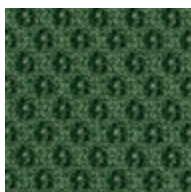
Utilisation pour dos résille ou en tissu pour assise et dossier garnis tapissés (cat. C)

Use for mesh back or for upholstered seat and back (cat. C)

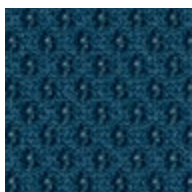
Use en respaldo de malla o como tela para asiento y respaldo tapizados (cat. C)



C R4T Terre



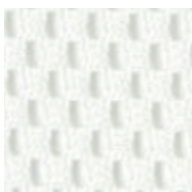
C R4V Vert



C R4W Bleu

R RESILLES

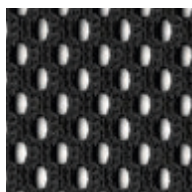
Tertio - Adela - Flipper - Kyos^(a) - Smash | Polyester



Blanc pur



Pantone 442 Gris

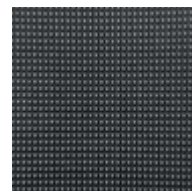


Noir

(a) JN + JH

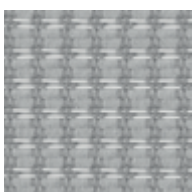
(b) WR + WH

Luz | Polyester

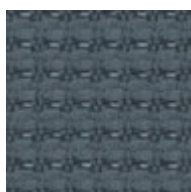


Noir

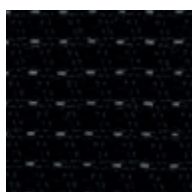
Wi-Max - Kyos^(b) | Polyester



RAL 7004 Gris clair

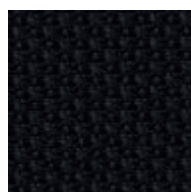


RAL 7012 Gris foncé



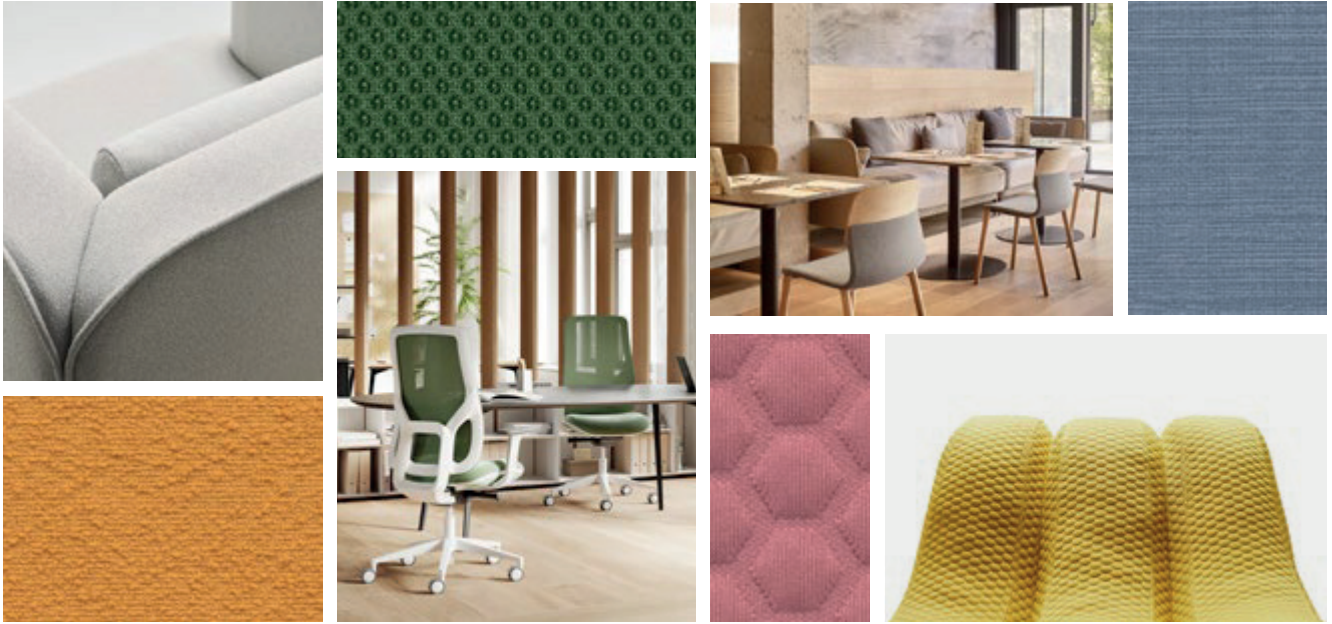
Noir

Alaia | 76% Polyester recyclé



Noir

INFOS TECHNIQUES | TECHNICAL DATA | DATOS TÉCNICOS



B



X-TREVIRA	100% Polyester Trèvira CS	300 g/m ²	100 000 cycles	6	EN 1021-1 Cigarette EN 1021-2 Allumette M1 AM18 ⁽²⁾ BS 7176 Medium Hazard BS 5852 Crib 5 CA TB 117-2013	Oeko-Tex stand. 100 EU Ecolabel	Aspirateur Eponge humide et savon doux. Vacuum Wet sponge and soft soap. Aspirador Esponja húmeda y jabón suave.	Chiffon imbibé d'Ethanol. Cloth soaked in Ethanol. Paño empapado en Etanol.
NAPEL	89,5% PVC 10,5% PES	660 g/m ²	50 000 cycles ⁽¹⁾	>6	○	○	Eponge humide et savon doux. Wet sponge and soft soap. Esponja húmeda y jabón suave.	Spray désinfectant suivi d'un rinçage à l'eau clair. Disinfectant spray followed by rinsing with clear water. Spray desinfectante seguido de enjuague con agua limpia.

B+

CURA	98% Polyester recyclé 2% Polyester	300 g/m ²	100 000 cycles + Garantie 10 ans	5-8	EN 1021-1 Cigarette EN 1021-2 Allumette CA TB 117-2013	Oeko-Tex stand. 100 EU Ecolabel	Aspirateur Eponge humide et savon doux. Vacuum Wet sponge and soft soap. Aspirador Esponja húmeda y jabón suave.	Chiffon imbibé d'Ethanol. Cloth soaked in Ethanol. Paño empapado en Etanol.
EDEN FREE	87% PVC 13% Polyester	780 g/m ²	100 000 cycles ⁽¹⁾	>7	EN 1021-1 Cigarette EN 1021-2 Allumette BS 5852 0, 1	Oeko-Tex stand. 100 Phtalates free	Eponge humide et savon doux. Wet sponge and soft soap. Esponja húmeda y jabón suave.	Spray désinfectant suivi d'un rinçage à l'eau clair. Disinfectant spray followed by rinsing with clear water. Spray desinfectante seguido de enjuague con agua limpia.

C

ATLANTIC	100% Polyester	353 g/m ²	110 000 cycles + Garantie 10 ans	5-7	EN 1021-1 Cigarette EN 1021-2 Allumette CA TB 117-2013	Oeko-Tex stand. 100 EU Ecolabel	Aspirateur Eponge humide et savon doux. Vacuum Wet sponge and soft soap. Aspirador Esponja húmeda y jabón suave.	Chiffon imbibé d'Ethanol. Cloth soaked in Ethanol. Paño empapado en Etanol.
NOMA	100% Polyester recyclé	314 g/m ²	60 000 cycles + Garantie 10 ans	5-8	EN 1021-1 Cigarette EN 1021-2 Allumette M1 AM18 ⁽²⁾ BS 5852 crib 5 CA TB 117-2013	Oeko-Tex stand. 100 EU Ecolabel	Aspirateur Eponge humide et savon doux. Vacuum Wet sponge and soft soap. Aspirador Esponja húmeda y jabón suave.	Chiffon imbibé d'Ethanol. Cloth soaked in Ethanol. Paño empapado en Etanol.
GINKGO	85% PVC 15% Coton	830 g/m ²	150 000 cycles ⁽¹⁾	>6	EN 1021-1 Cigarette EN 1021-2 Allumette M1 AM18 BS 5852 crib 5 CA TB 117-2013	Sanitized Phtalates free	Eponge humide et savon doux. Wet sponge and soft soap. Esponja húmeda y jabón suave.	Spray désinfectant suivi d'un rinçage à l'eau clair. Disinfectant spray followed by rinsing with clear water. Spray desinfectante seguido de enjuague con agua limpia.

⁽¹⁾ISO 5470-2

⁽²⁾Avec une mousse ignifugée type CMHR / With combustion modified high resilience foam / Con espuma de alta resiliencia modificada por combustión

C



STEP MELANGE	100% Polyester Trévira CS	336 g/m ²	100 000 cycles + Garantie 10 ans	5-7	EN 1021-1 Cigarette EN 1021-2 Allumette BS 5852 crib 5 M1 AM18 ⁽²⁾ CA TB 117-2013	Oeko-Tex stand. 100 EU Ecolabel		
RUNNER	20% Polyester recyclé 80% Polyester	319 g/m ²	70 000 cycles + Garantie 10 ans	5-7	EN 1021-1 Cigarette EN 1021-2 Allumette CA TB 117-2013	Oeko-Tex stand. 100 EU Ecolabel Cradle to cradle		
BLEND	100% Polyester recyclé	296 g/m ²	100 000 cycles + Garantie 10 ans	7-8	EN 1021-1 Cigarette EN 1021-2 Allumette CA TB 117-2013	Oeko-Tex stand. 100 EU Ecolabel	Aspirateur Eponge humide et savon doux. Vacuum Wet sponge and soft soap. Aspirador Esponja húmeda y jabón suave.	Chiffon imbibé d'Ethanol. Cloth soaked in Ethanol. Paño empapado en Etanol.
SPAZIO	100% Polyester recyclé	635 g/m ²	50 000 cycles	6	EN 1021-1 Cigarette EN 1021-2 Allumette BS 7176 Low Hazard CA TB 117-2013	Oeko-Tex stand. 100 GRS		
BOUCLE F.R.	100% Polyester anti-tache/anti-stain/ antimancha	490 g/m ²	50 000 cycles	4-5	EN 1021-1 Cigarette EN 1021-2 Allumette BS 5852 0 BS 7176 Low Hazard CA TB 117-2013	Oeko-Tex stand. 100		
NATURAL LINEN	85% PVC 15% Polyester 100% recyclé	695 g/m ²	300 000 cycles ⁽¹⁾	>7	EN 1021-1 Cigarette EN 1021-2 Allumette M2 AM18 ⁽²⁾	Phtalates free	Eponge humide et savon doux. Wet sponge and soft soap. Esponja húmeda y jabón suave.	Spray désinfectant suivi d'un rinçage à l'eau clair. Disinfectant spray followed by rinsing with clear water. Spray desinfectante seguido de enjuague con agua limpia.

D

SELECT	85% Laine (New Zealand) 15% Polyamide	364 g/m ²	200 000 cycles + Garantie 10 ans	5-8	EN 1021-1 Cigarette EN 1021-2 Allumette BS 5852 crib 5 CA TB 117-2013	Oeko-Tex stand. 100 EU Ecolabel	Aspirateur / Nettoyage à sec. Vacuum / Dry clean. Aspirador / Limpieza en seco.	
24N	100% Nylon	422 g/m ²	1 000 000 cycles ⁽⁴⁾	4	EN 1021-1 Cigarette EN 1021-2 Allumette CA TB 117-2013		Aspirateur Eponge humide et savon doux. Vacuum Wet sponge and soft soap. Aspirador Esponja húmeda y jabón suave.	Chiffon imbibé d'Ethanol.⁽³⁾ Cloth soaked in Ethanol. ⁽³⁾ Paño empapado en Etanol. ⁽³⁾
GRAIN	80% Polyester recyclé 20% Polyester	439 g/m ²	100 000 cycles + Garantie 10 ans	5-7	EN 1021-1 Cigarette EN 1021-2 Allumette CA TB 117-2013	Oeko-Tex stand. 100		
SILVERTEX B1	100% Vinyle Support: 100% Coton	760 g/m ²	300 000 cycles	7-8	EN 1021-1 Cigarette EN 1021-2 Allumette M1 AM18 BS 5852 part crib 7	Permblok 3 Phtalates free	Eponge humide et savon doux. Wet sponge and soft soap. Esponja húmeda y jabón suave.	Spray désinfectant suivi d'un rinçage à l'eau clair. Disinfectant spray followed by rinsing with clear water. Spray desinfectante seguido de enjuague con agua limpia.

E/H

CUIR	Cuir vachette fleur corrigée pigmentée Pigmented finish cow leather Cuero vacuno acabado pigmentado	Epaisseur 1 à 1,1 mm	Nos peaux sont soigneusement choisies parmi des cuirs européens de premier choix. Le cuir est un produit de valeur dont l'aspect naturel garantit le caractère noble. Volontairement les marques de la peau de l'animal n'ont pas été entièrement dissimulées par le pigment car elles contribuent à la caractéristique naturelle du produit. Le choix du cuir implique aussi l'acceptation de marques de la nature (rides de collet, égratignures, piqûres d'insecte...) d'une matière procurant plaisir de contact, solidité et confort pendant longtemps. Our skins are carefully selected from European high quality leathers. Leather is a valuable product which natural appearance guarantees noble character. Voluntarily blemishes of the skin of the animal have not been totally concealed by the pigment as they assure the natural characteristic of the product. The choice of leather also implies the acceptance of nature's blemishes (collar lines, scratches, insect bites...) of a durable material providing pleasure of touch and comfort for a long time. Las pieles que utilizamos han sido seleccionadas entre las pieles europeas de primeras marcas. El cuero es un producto de valor cuyo aspecto natural garantiza el carácter noble. Voluntariamente las imperfecciones de la piel del animal no se han quitado del todo con el pigmentado porque son características naturales del producto. La elección de pieles implica también la aceptación de marcas (arrugas de cuello, arañazos, picaduras de insecto...) de una materia agradable al tacto y durable en el tiempo..	EN 1021-1 Cigarette EN 1021-2 Allumette	Nettoyage avec une éponge humide légèrement savonneuse. Sécher à la peau de chamois. Cire d'abeille selon désir. To clean with a humid sponge lightly soaping. Dry with shammny leather. Wax can be used. Limpieza con una esponja húmeda ligeramente enjabonada. Secar la piel. Encerar si lo estima necesario.	L'eau savonneuse emporte les microparticules du virus. N'appliquez aucun produit contenant de l'alcool. The soapy water carries away the microparticles of the virus. Do not apply any product that contains alcohol. El agua jabonosa se lleva las micropartículas del virus. No aplicar ningún producto que contenga alcohol.
-------------	--	-------------------------	--	--	---	--

R

TERTIO ADELA FLIPPER KYOS SMASH	100% Polyester	340 g/m ²	100 000 cycles	5	EN 1021-1 Cigarette	Oeko-Tex stand. 100	Aspirateur Eponge humide et savon doux. Vacuum Wet sponge and soft soap.	
WI-MAX KYOS	55% Polyester 45% Polyamide	280 g/m ²	100 000 cycles	6	EN 1021-1 Cigarette	Oeko-Tex stand. 100		Chiffon imbibé d'Ethanol. Cloth soaked in Ethanol.
ALAIA	76% Polyester recyclé 24% Polyester	429 g/m ²	100 000 cycles + Garantie 10 ans	5-8	EN 1021-1 Cigarette EN 1021-2 Allumette CA TB 117-2013	Oeko-Tex stand. 100 EU Ecolabel Cradle to Cradle	Aspirador Esponja húmeda y jabón suave.	Paño empapado en Etanol.
LUZ	100% Polyester	360 g/m ²	100 000 cycles	6	EN 1021-1 Cigarette EN 1021-2 Allumette BS 7176 Medium Hazard CA TB 117-2013	Oeko-Tex stand. 100		

⁽¹⁾ ISO 5470-2

⁽²⁾ Avec une mousse ignifugée type CMHR
With combustion modified high resilience foam
Con espuma de alta resiliencia modificada por combustión

⁽³⁾ Mise en quarantaine du mobilier recommandée ; la désinfection à l'éthanol peut altérer le tissu laine.
Quarantining the furniture is recommended ; disinfection with ethanol can alter the fabric made of wool.
Se recomienda poner en cuarentena em mobiliario; la desinfección con etanol puede alterar el tejido con lana.

⁽⁴⁾ ASTM D4966-12

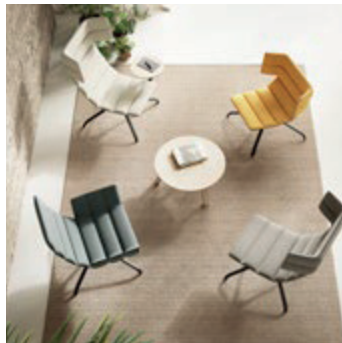
Résistance au feu :



EN 1021-1 Cigarette



EN 1021-2 Allumette



NETTOYAGE TISSUS

Il est nécessaire de procéder à un nettoyage régulier (tous les 2 mois minimum) du revêtement des sièges avec un aspirateur pour enlever la poussière et éviter l'incrustation de particules diverses (sable ou autres) pouvant être la source d'une dégradation et abrasion anormale du tissu.

Encre - Enlevez le plus possible avec du papier absorbant. Procédez du bord vers le centre. Nettoyez avec de l'alcool à 90° et lavez avec de l'eau additionnée d'un détergent biologique neutre à 5%.

Crayons à bille - Nettoyez à l'alcool à 90°.

Vernis à ongles - Tamponnez avec du dissolvant.

Peinture à l'eau - Tamponnez avec de l'eau froide.

Peinture à l'huile - Nettoyez avec de la térébenthine et tamponnez avec de l'eau additionnée de détergent neutre.

Graisse, huile, sauces - Saupoudrez la tache de talc et laissez agir. Enlevez le talc à l'aide d'une brosse et tamponnez légèrement avec un chiffon imbibé d'essence de térébenthine.

Rouge à lèvres - Tamponnez avec l'essence de térébenthine.

Cirage, cire d'entretien - Tamponnez légèrement avec un chiffon humecté d'essence de térébenthine.

Confiture, crème, fruits - Enlevez le plus possible à l'aide d'un instrument plat, puis tamponnez avec de l'eau tiède.

Chocolat - Tamponnez avec un chiffon humecté d'eau tiède.

Sang - Lavez avec de l'eau contenant un détergent neutre.

Chewing gum - Refroidissez à l'aide d'un sac en plastique rempli de glaçons.

Vin, champagne, alcool - Enlevez le plus possible avec du papier absorbant, puis tamponnez avec de l'eau additionnée d'un détergent pour linge ou shampooing dilué selon recommandation du fabricant.

Café, thé et lait - Enlevez le plus possible avec du papier absorbant, puis tamponnez avec de l'eau additionnée d'un détergent biologique neutre à 5%.

STAIN CLEANING

There is a need for regular cleaning (every 2 months minimum) the upholstery with a vacuum cleaner to remove dust and prevent the embedding of various particles (sand or other) that may be the source of degradation and abrasion abnormal tissue.

Ink - To be removed first with absorbent paper. Proceed from the border to the centre. To be cleaned up with alcohol (90°) and washed with water adding a neutral biological detergent.

Pencil - To be cleaned with 90° alcohol.

Oil-painting - Clean with turpentine and tampon using water and a neutral detergent.

Water painting - Tampon using cold water.

Nail-varnish - Tampon using solvent.

Oils, grease and sauces - Stain to be powdered with talc. Wait for a few minutes. Remove talc with a brush and slightly press with a rag using turpentine.

Shoe-cream - To be lightly tamponed using turpentine.

Lip-stick - Tampon using turpentine.

Chocolate - Tampon with rag using tepid water.

Blood - To be cleaned using water and a neutral detergent.

Chewing gum - To be cooled using a plastic bag full of ice.

Wine, Champagne, alcohol - To be removed as much as possible using absorbent paper. Then tampon using a linen detergent or diluted shampoo following the manufacturer's instructions.

Coffee, tea and milk - To be removed with absorbent paper. Then tampon using water along with a neutral biological detergent.

LIMPIEZA DE TAPIZADOS

Es necesario proceder a una limpieza regular de la tapicería al menos cada 2 meses con un aspirador para eliminar el polvo depositado y evitar la incrustación de ciertas partículas, como arena u otros, pudiendo ser la causa de una degradación y abrasión anormal del tejido.

Tinta - Absorber lo que se pueda con papel secante, comenzando por los bordes para ir hacia el centro. Limpiar con alcohol a 90° y aclarar con agua y detergente neutro al 5% de concentración.

Bolígrafo - Limpiar con alcohol 90°.

Pintura de agua - Limpiar con agua fría.

Pintura de aceite - Limpiar con aguarrás y acabar con agua y detergente neutro.

Barniz para uñas - Limpiar con disolvente.

Grasas, aceites, salsas - Espolvorear la mancha con polvos talco y dejar algún tiempo. Retirar el talco con un cepillo y golpear ligeramente con una tela empapada en disolvente.

Betún, cera - Golpear suave y repetidamente con una tela humedecida en aguarrás.

Barra de labios - Golpear ligeramente con aguarrás.

Mermelada, crema, frutas - Retirar con una espátula, luego limpiar con agua templada.

Chocolate - Golpear ligeramente con tela humidificada en agua templada.

Sangre - Limpiar con detergente neutro diluido en agua.

Chicle - Enfriar con una bolsa llena de hielo y retirar el chicle.

Vino, cava, alcohol - Absorber con papel secante, luego con solución de agua y detergente para ropa o champú diluido según instrucciones del fabricante.

Café, té, leche - Absorber con papel secante y golpear repetida y suavemente con agua y detergente neutro al 5%.



Sokoa

Ambiance Bureau

Document non contractuel

Siège Social
26, Rue de Béhobie
CS 20119
64700 Hendaye
France

T 00 33 559 482 482
F 00 33 559 482 488
info@sokoa.com

Showroom Paris Madeleine
18, Rue Duphot
75001 Paris
France

T 00 33 6 42 90 66 29



COPYRIGHT © 2024 SOKOA

Tous droits réservés / All right reserved

S.A. au capital de 14 074 470 €
APE 3101 Z – RC 712 720 374B

sokoa.com