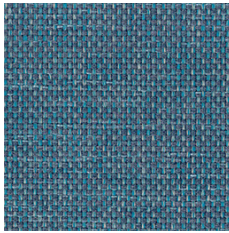
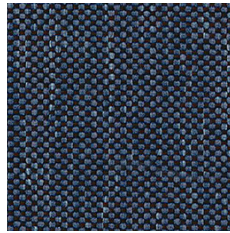


Berta

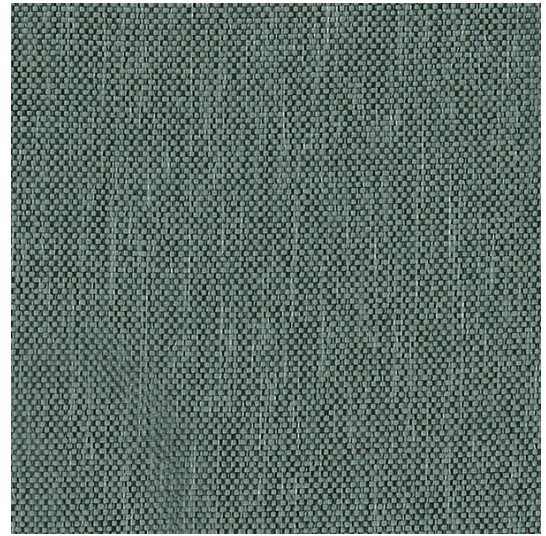
Cat. 1



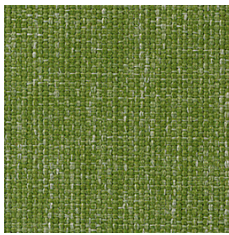
GA06



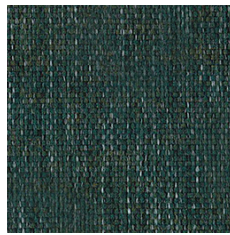
GA09



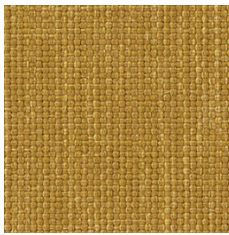
GA12



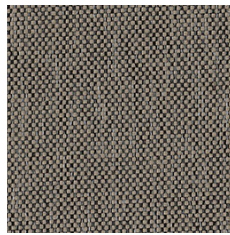
GA18



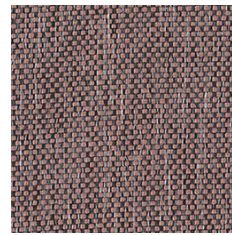
GA11



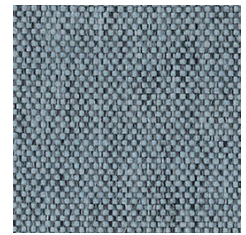
GA07



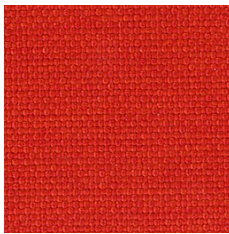
GA13



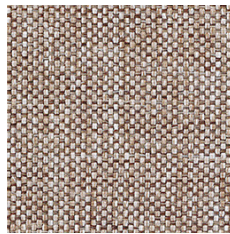
GA14



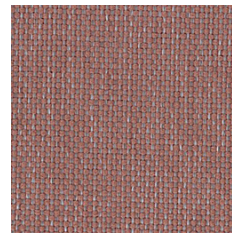
GA16



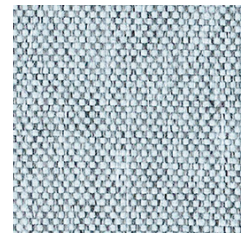
GA15



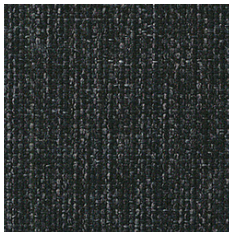
GA08



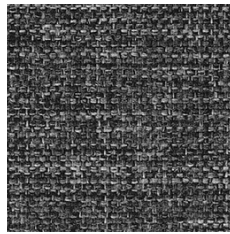
GA10



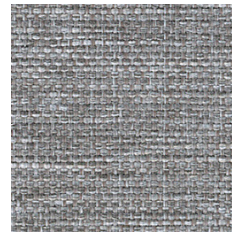
GA17



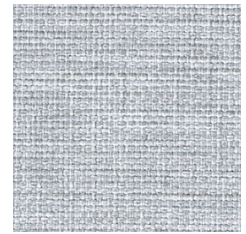
GA00



GA01



GA02



GA03



For chairs and soft seating — EN

Certified to OEKO-TEX® Standard 100

Composition
100% Polyester

Weight
320 g/m²

Abrasion resistance
150.000 Martindale cycles

Flammability
BS EN 1021-1 (cigarette)
BS 5852: part 1

BS EN 1021-2

Light fastness
6 (EN ISO 105-B02, EN ISO 105-A01)

Fastness to rubbing
wet: 4-5; dry: 5 (ISO 105-X12)

Pour sièges et sièges Lounge — FR

Certifié conforme à la norme OEKO-TEX® 100

Composition
100% Polyester

Poids
320 g/m²

Résistance à l'abrasion
150.000 Cycles Martindale

Inflammabilité
BS EN 1021-1 (cigarette)
BS 5852: part 1

BS EN 1021-2

Stabilité à la lumière
6 (EN ISO 105-B02, EN ISO 105-A01)

Résistance au frottement
humide: 4-5; sec: 5 (ISO 105-X12)

Für Stühle und weiches Sitzen — DE

Zertifiziert gemäß OEKO-TEX® Standard 100

Zusammensetzung
100% Polyester

Gewicht
320 g/m²

Abriebfestigkeit
150.000 Martindale-Zyklen

Entflammbarkeit
BS EN 1021-1 (Zigarette)
BS 5852: part 1

BS EN 1021-2

Lichtgeschwindigkeit
6 (EN ISO 105-B02, EN ISO 105-A01)

Reibechtheit
nass: 4-5; trocken: 5 (ISO 105-X12)

For screens — EN

Certified to OEKO-TEX® Standard 100

Composition
100% Polyester

Weight
340 g/m²

Abrasion resistance
80.000 Martindale cycles

Flammability
BS EN 1021-1 (cigarette)

Light fastness
6 (EN ISO 105-B02, EN ISO 105-A01)

Fastness to rubbing
wet: 4-5; dry: 5 (ISO 105-X12)

Pour écrans — FR

Certifié conforme à la norme OEKO-TEX® 100

Composition
100% Polyester

Poids
340 g/m²

Résistance à l'abrasion
80.000 Cycles Martindale

Inflammabilité
BS EN 1021-1 (cigarette)

Stabilité à la lumière
6 (EN ISO 105-B02, EN ISO 105-A01)

Résistance au frottement
humide: 4-5; sec: 5 (ISO 105-X12)

Für Abschirmungen — DE

Zertifiziert gemäß OEKO-TEX® Standard 100

Zusammensetzung
100% Polyester

Gewicht
340 g/m²

Abriebfestigkeit
80.000 Martindale-Zyklen

Entflammbarkeit
BS EN 1021-1 (Zigarette)

Lichtgeschwindigkeit
6 (EN ISO 105-B02, EN ISO 105-A01)

Reibechtheit
nass: 4-5; trocken: 5 (ISO 105-X12)

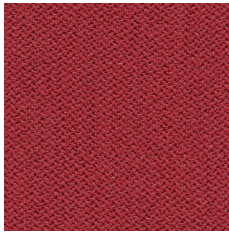
! —————
Batch to batch variations in shade may occur within commercial tolerances.

! —————
Des variations de teinte d'un lot à l'autre peuvent se produire dans le cadre des tolérances commerciales.

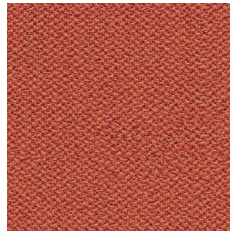
! —————
Innerhalb der handelsüblichen Toleranzen können Farbabweichungen von Charge zu Charge auftreten.

Era

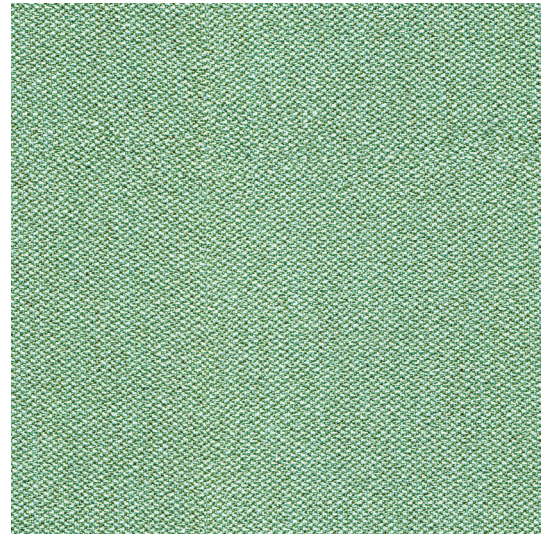
Cat. 1



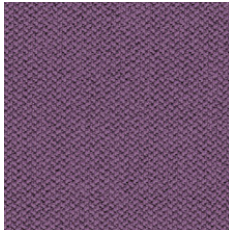
* CSE28 GC28



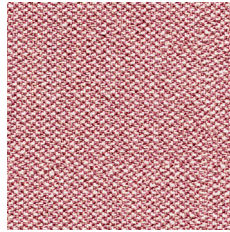
* CSE29 GC29



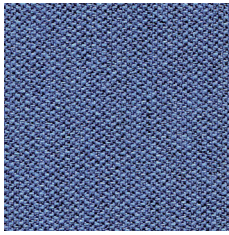
* CSE36 GC36



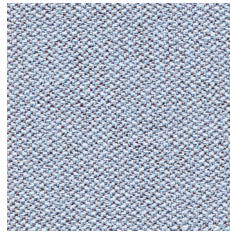
* CSE09 GC09



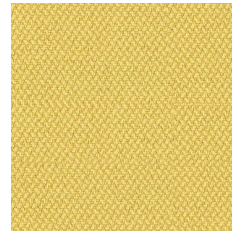
* CSE24 GC24



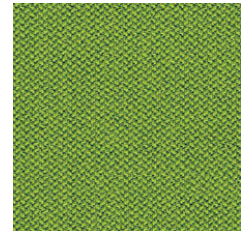
* CSE42 GC42



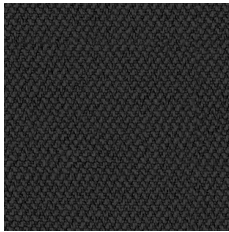
* CSE39 GC39



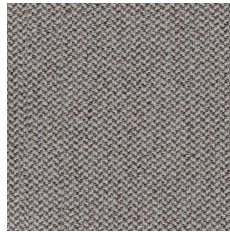
* CSE03 GC03



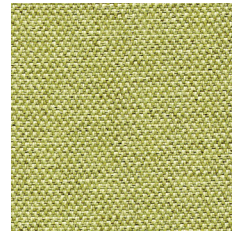
* CSE16 GC16



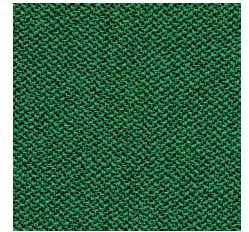
* CSE14 GC14



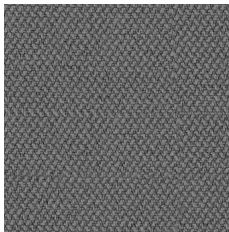
* CSE02 GC02



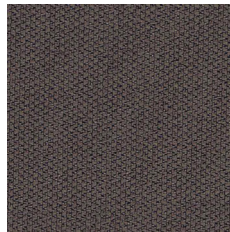
* CSE34 GC34



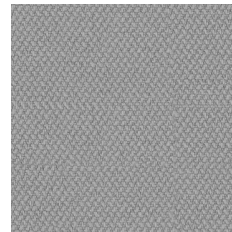
* CSE35 GC35



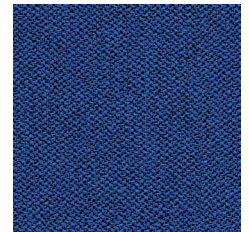
* CSE13 GC13



* CSE21 GC21



* CSE11 GC11



* CSE40 GC40



EN

Certified to OEKO-TEX® Standard 100

Certified to Indoor Advantage™ “Gold”

Non metallic dyestuffs

Composition

100% Polyester

Weight

320 g/m²

Abrasion resistance

100.000 Martindale cycles

Flammability

BS EN 1021-1 (cigarette)

BS EN 1021-2 (match)

BS 7176 Low Hazard

EN 13501-1, B-s1, d0 (adhered)

EN 13501-1, C-s1, d0 (wrapped rockwool)

CAL TB 117

Light fastness

5 (EN ISO 105-B02)

Fastness to rubbing

wet: 4; dry: 4 (ISO 105-X12)

FR

Certifié conforme à la norme
OEKO-TEX® 100

Certifié Indoor Advantage™ Gold

Colorants non métalliques

Composition

100% Polyester

Poids

320 g/m²

Résistance à l'abrasion

100.000 Cycles Martindale

Inflammabilité

BS EN 1021-1 (cigarette)

BS EN 1021-2 (allumette)

BS 7176 Low Hazard

EN 13501-1, B-s1, d0 (collé)

EN 13501-1, C-s1, d0 (recouvert de laine
de roche)

CAL TB 117

Stabilité à la lumière

5 (EN ISO 105-B02)

Résistance au frottement

humide: 4; sec: 4 (ISO 105-X12)

DE

Zertifiziert gemäß OEKO-TEX®
Standard 100

Zertifiziert gemäß Indoor
Advantage™ „Gold“

Nichtmetallische Farbstoffe

Zusammensetzung

100% Polyester

Gewicht

320 g/m²

Abriebfestigkeit

100.000 Martindale-Zyklen

Entflammbarkeit

BS EN 1021-1 (Zigarette)

BS EN 1021-2 (Streichholz)

BS 7176 Low Hazard

EN 13501-1, B-s1, d0 (anhaftend)

EN 13501-1, C-s1, d0 (umwickelte
Mineralwolle)

CAL TB 117

Lichtgeschwindigkeit

5 (EN ISO 105-B02)

Reibechtheit

nass: 4; trocken: 4 (ISO 105-X12)

!

Batch to batch variations in shade may occur within commercial tolerances.

!

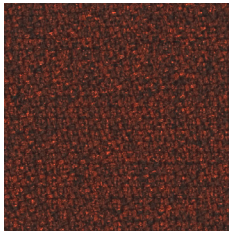
Des variations de teinte d'un lot à l'autre peuvent se produire dans le cadre des tolérances commerciales.

!

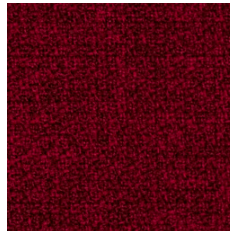
Innerhalb der handelsüblichen Toleranzen können Farbabweichungen von Charge zu Charge auftreten.

Step | Step Melange

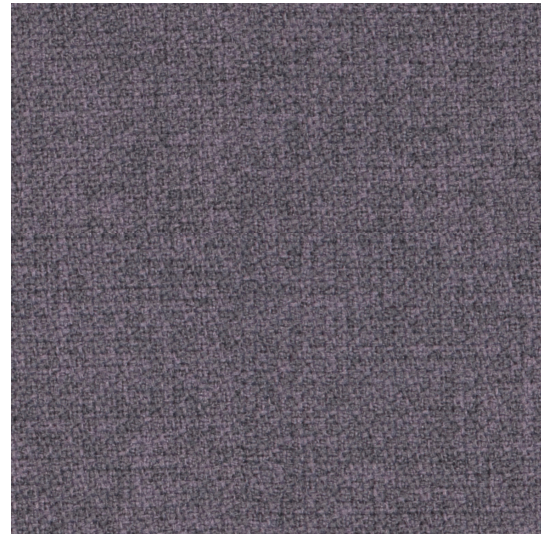
Cat. 2 | Cat.3



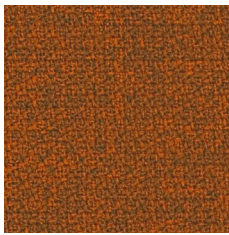
*63075 GL24



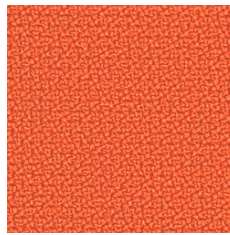
*64013 GL18



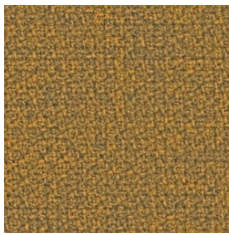
*65093 GL83



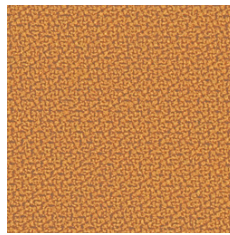
*63082 GL10



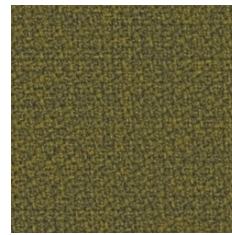
*63082 GL11



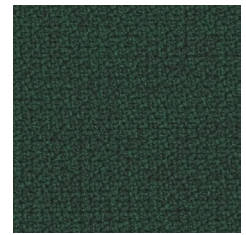
*62057 GL16



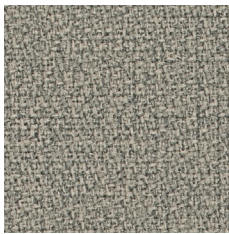
*62057 GL17



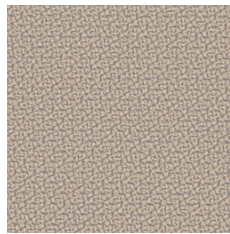
*68119 GL08



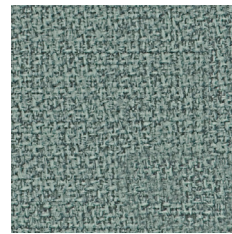
*68161 GL26



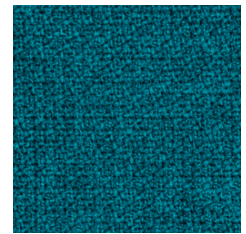
*61104 GL70



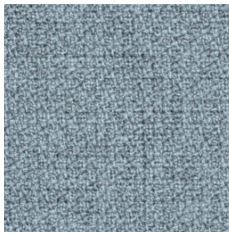
*61149 GL15



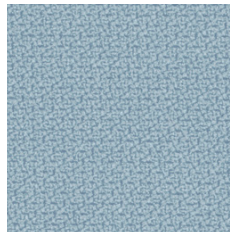
*68118 GL50



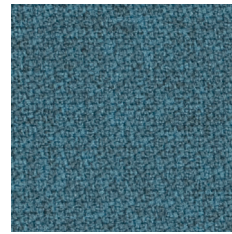
*67007 GL02



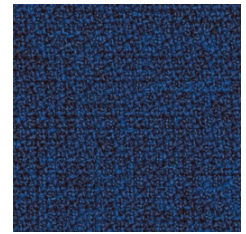
*67004 GL06



*67004 GL07



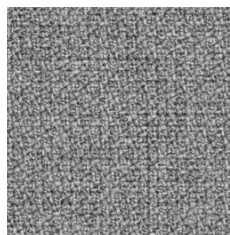
*67072 GL28



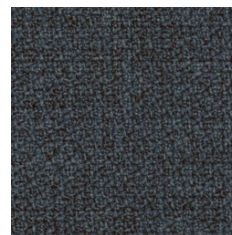
*66149 GL04



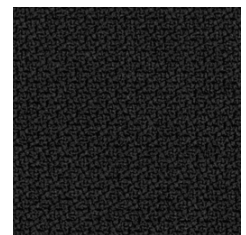
*60011 GL34



*60004 GL12



*66019 GL20



*60999 GL01

Step | Step Melange



EN

Certified to OEKO-TEX® Standard 100

Certified to the EU Ecolabel

Composition

100% Trevira CS® Flame Retardant Polyester

Weight

470 g/m²

Abrasion resistance

100.000 Martindale cycles

Flammability

BS EN 1021-1 (cigarette)

BS EN 1021-2 (match)

BS 5852: part 1

BS 5852: part 2 (Crib 5)

BS 7176 Medium Hazard

UNI 9175 & UNI 9175/FA1 Classe 1 IM

DIN 4102 B1

NFP-P-92-503-512 M1

ÖNORM B 3825-B1-3800-Q1 UK

AM 18 - NF D 60-013 (only for fabric)

CA TB 117-2013

DIN EN 13501-1 B-s1, d0

Light fastness

5-7 (EN ISO 105-B02)

Fastness to rubbing

wet: 4-5; dry: 4-5 (ISO 105-X12)

FR

Certifié conforme à la norme OEKO-TEX® 100

Certifié conforme à l'écolabel européen

Composition

100% Trevira CS® Polyester Inflammable

Poids

470 g/m²

Résistance à l'abrasion

100.000 Cycles de Martindale

Inflammabilité

BS EN 1021-1 (cigarette)

BS EN 1021- 2 (allumette)

BS 5852: part 1

BS 5852: part 2 (Crib 5)

BS 7176 Medium Hazard

UNI 9175 & UNI 9175/FA1 Classe 1 IM

DIN 4102 B1

NFP-P-92-503-512 M1

ÖNORM B 3825-B1-3800-Q1 UK

AM 18 - NF D 60-013 (uniquement pour les tissus)

CA TB 117-2013

DIN EN 13501-1 B-s1, d0

Stabilité à la lumière

5-7 (EN ISO 105-B02)

Résistance au frottement

humide: 4-5; sec: 4-5 (ISO 105-X12)

DE

Zertifiziert gemäß OEKO-TEX® Standard 100

Zertifiziert nach EU Ecolabel

Zusammensetzung

100% Trevira CS® Flammhemmendes Polyester

Gewicht

470 g/m²

Abriebfestigkeit

100.000 Martindale-Zyklen

Entflammbarkeit

BS EN 1021-1 (Zigarette)

BS EN 1021-2 (Streichholz)

BS 5852: part 1

BS 5852: part 2 (Crib 5)

BS 7176 Medium Hazard

UNI 9175 & UNI 9175/FA1 Classe 1 IM

DIN 4102 B1

NFP-P-92-503-512 M1

ÖNORM B 3825-B1-3800-Q1 UK

AM 18 - NF D 60-013 (nur für Stoff)

CA TB 117-2013

DIN EN 13501-1 B-s1, d0

Lichtgeschwindigkeit

5-7 (EN ISO 105-B02)

Reibechtheit

nass: 4-5; trocken: 4-5 (ISO 105-X12)

!

Cat. 2 applies to seating category products and Cat. 3 applies to screens and panels.

!

Batch to batch variations in shade may occur within commercial tolerances.

!

La cat. 2 s'applique aux produits de la catégorie sièges et la cat. 3 s'applique aux écrans et aux panneaux.

!

Des variations de teinte d'un lot à l'autre peuvent se produire dans le cadre des tolérances commerciales.

!

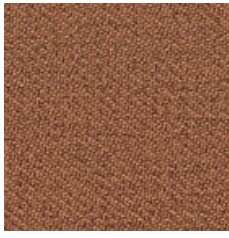
Kat. 2 gilt für Produkte der Kategorie Sitzmöbel und Kat. 3 gilt für Trennwände und Platten.

!

Innerhalb der handelsüblichen Toleranzen können Farbabweichungen von Charge zu Charge auftreten.

Austea

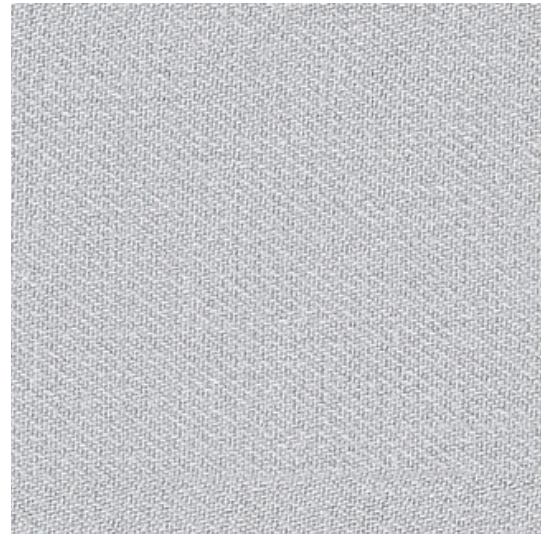
Cat. 2



*1/52 GT08



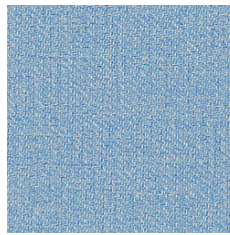
*1/38 GT04



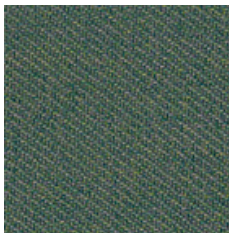
*1/37 GT03



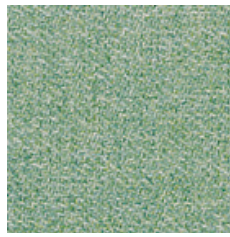
*1/55 GT12



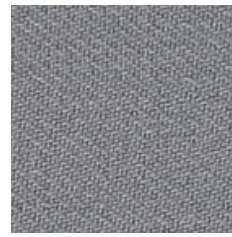
*1/56 GT11



*1/51 GT10



*1/54 GT09



*1/6 GT02



*1/50 GT01



*1/39 GT06



*1/2 GT05



*1/49 GT07



*1/53 GT13



For chairs and soft seating — EN

Certified to OEKO-TEX® Standard 100

Composition

100% post-consumer recycled polyester

Weight

420 g/m²

Abrasion resistance

150.000 Martindale cycles

Flammability

BS EN 1021-1 (cigarette)

BS EN 1021-2 (match)

BS 5852, Crib 5

Light fastness

6 (EN ISO 105-B02)

Fastness to rubbing

wet: 4-5; dry: 5 (ISO 105-X12)

Pour sièges et sièges Lounge — FR

Certifié conforme à la norme OEKO-TEX® 100

Composition

Polyester recyclé 100 % après utilisation

Poids

420 g/m²

Résistance à l'abrasion

150.000 Cycles Martindale

Inflammabilité

BS EN 1021-1 (cigarette)

BS EN 1021- 2 (allumette)

BS 5852, Crib 5

Stabilité à la lumière

6 (EN ISO 105-B02)

Résistance au frottement

humide: 4-5; sec: 5 (ISO 105-X12)

Für Stühle und weiches Sitzen — DE

Zertifiziert gemäß OEKO-TEX® Standard 100

Zusammensetzung

Nach der Nutzung 100 % recyceltes Polyester

Gewicht

420 g/m²

Abriebfestigkeit

150.000 Martindale-Zyklen

Entflammbarkeit

BS EN 1021-1 (Zigarette)

BS EN 1021-2 (Streichholz)

BS 5852, Crib 5

Lichtgeschwindigkeit

6 (EN ISO 105-B02)

Reibechtheit

nass: 4-5; trocken: 5 (ISO 105-X12)

For screens — EN

Certified to OEKO-TEX® Standard 100

Composition

100% post-consumer recycled polyester

Weight

300 g/m²

Abrasion resistance

70.000 Martindale cycles

Flammability

BS EN 1021-1 (cigarette)

CAL TB 117

Light fastness

6 (EN ISO 105-B02)

Fastness to rubbing

wet: 4-5; dry: 5 (ISO 105-X12)

Pour écrans — FR

Certifié conforme à la norme OEKO-TEX® 100

Composition

Polyester recyclé 100 % après utilisation

Poids

300 g/m²

Résistance à l'abrasion

70.000 Cycles Martindale

Inflammabilité

BS EN 1021-1 (cigarette)

CAL TB 117

Stabilité à la lumière

6 (EN ISO 105-B02)

Résistance au frottement

humide: 4-5; sec: 5 (ISO 105-X12)

Für Abschirmungen — DE

Zertifiziert gemäß OEKO-TEX® Standard 100

Zusammensetzung

Nach der Nutzung 100 % recyceltes Polyester

Gewicht

300 g/m²

Abriebfestigkeit

70.000 Martindale-Zyklen

Entflammbarkeit

BS EN 1021-1 (Zigarette)

CAL TB 117

Lichtgeschwindigkeit

6 (EN ISO 105-B02)

Reibechtheit

nass: 4-5; trocken: 5 (ISO 105-X12)

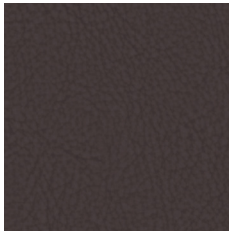
! —————
Batch to batch variations in shade may occur within commercial tolerances.

! —————
Des variations de teinte d'un lot à l'autre peuvent se produire dans le cadre des tolérances commerciales.

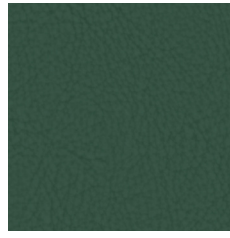
! —————
Innerhalb der handelsüblichen Toleranzen können Farbabweichungen von Charge zu Charge auftreten.

Valencia C5

Cat. 3



*238-0020 DU1



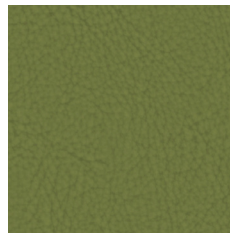
*238-5069 DU2



*238-0035 DJ2



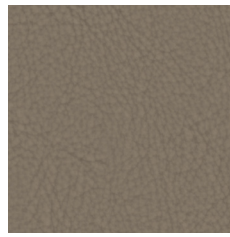
*107-2074 DU5



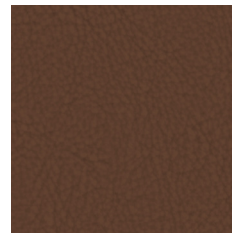
*238-5001 DU3



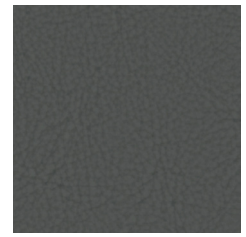
*238-3067 DU4



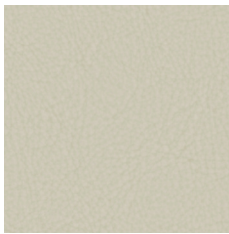
*238-0034 DT7



*238-2115 DT9



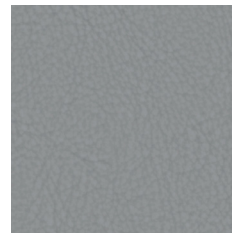
*238-4003 DT3



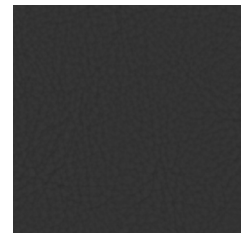
*238-1048 DS6



*238-4040 DT5



*238-4045 DT4



*238-9035 DT2

Valencia C5

EN

Composition

Vinyl / Urethane Topcoat

Weight

665 g/m²

Abrasion resistance

>300.000 Martindale cycles

Flammability

BS EN 1021-1 (cigarette)
BS EN 1021-2 (match)
ÖNORM A 3800-1, Q1
ÖNORM B 3825, Group 1
DIN 4102, B2
UNE 23.727-90, 1R/M.2
NF D 60-013
NF P 92-503, M2
UNI 9175 Classe 1 IM
BS 5852: part 2 (Crib 5)
BS 7176, Medium Hazard
CAL TB 117-2013
NEPA 260, Class 1

Light fastness

≥7-8 (EN ISO 105-B02)

Fastness to rubbing

wet: 5; dry: 5 (ISO 105-X12)

FR

Composition

Vinyl / Urethane Topcoat

Poids

665 g/m²

Résistance à l'abrasion

>300.000 Cycles Martindale

Inflammabilité

BS EN 1021-1 (cigarette)
BS EN 1021-2 (match)
ÖNORM A 3800-1, Q1
ÖNORM B 3825, Group 1
DIN 4102, B2
UNE 23.727-90, 1R/M.2
NF D 60-013
NF P 92-503, M2
UNI 9175 Classe 1 IM
BS 5852: part 2 (Crib 5)
BS 7176, Medium Hazard
CAL TB 117-2013
NEPA 260, Class 1

Stabilité à la lumière

≥7-8 (EN ISO 105-B02)

Résistance au frottement

humide: 5; sec: 5 (ISO 105-X12)

DE

Zusammensetzung

Vinyl / Urethane Topcoat

Gewicht

665 g/m²

Abriebfestigkeit

>300.000 Martindale-Zyklen

Entflammbarkeit

BS EN 1021-1 (cigarette)
BS EN 1021-2 (match)
ÖNORM A 3800-1, Q1
ÖNORM B 3825, Group 1
DIN 4102, B2
UNE 23.727-90, 1R/M.2
NF D 60-013
NF P 92-503, M2
UNI 9175 Classe 1 IM
BS 5852: part 2 (Crib 5)
BS 7176, Medium Hazard
CAL TB 117-2013
NEPA 260, Class 1

Lichtgeschwindigkeit

≥7-8 (EN ISO 105-B02)

Reibechtheit

nass: 5; trocken: 5 (ISO 105-X12)

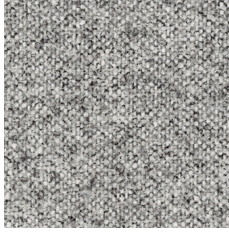
! Batch to batch variations in shade may occur within commercial tolerances.

! Des variations de teinte d'un lot à l'autre peuvent se produire dans le cadre des tolérances commerciales.

! Innerhalb der handelsüblichen Toleranzen können Farbabweichungen von Charge zu Charge auftreten.

Dream

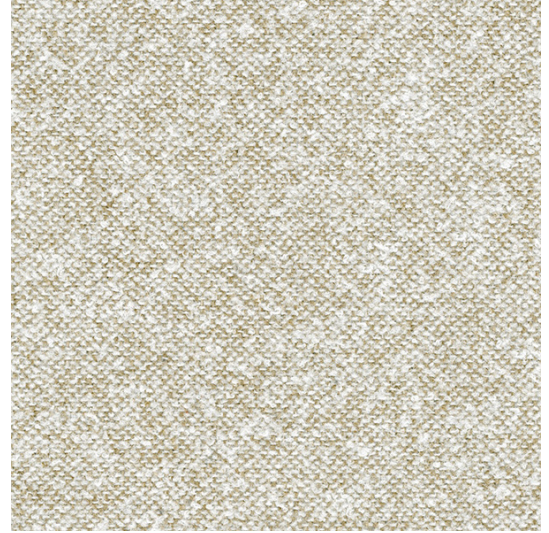
Cat. 3



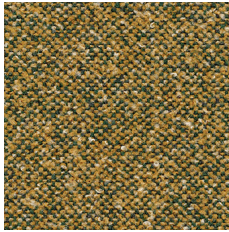
*9132 GQ02



*9182 GQ03



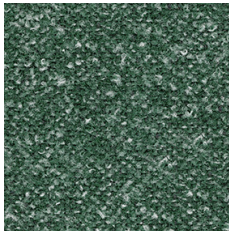
*9101 GQ04



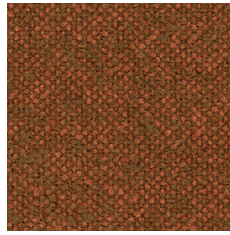
*9705 GQ06



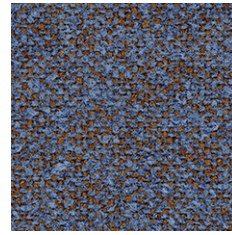
*1014 GQ05



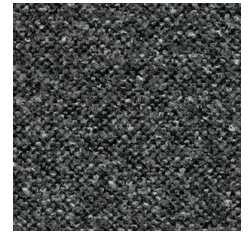
*9728 GQ07



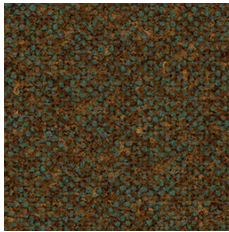
*9421 GQ10



*9229 GQ11



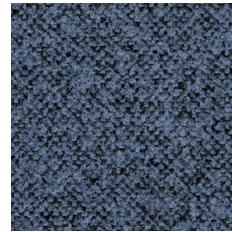
*9820 GQ01



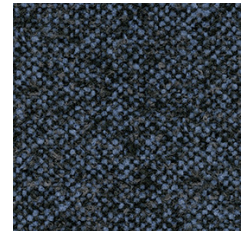
*9702 GQ08



*9202 GQ09



*9829 GQ12



*9693 GQ13

Dream



For lounge and soft furniture, and visitor chairs — EN

Certified to OEKO-TEX® Standard 100

Composition

100% mass-dyed polyester

Weight

375 g/m²

Abrasion resistance

100.000 Martindale cycles

Flammability

BS EN 1021-1 (cigarette)

BS EN 1021-2 (match)

BS 7176 Low Hazard

CAL TB 117:2013

UNI 9175 Classe 1 IM

Light fastness

7 (EN ISO 105-B02)

Fastness to rubbing

wet: 4-5; dry: 4-5 (EN ISO 105-X12)

Pour les Sièges Lounge et les Chaises visiteurs — FR

Certifié conforme à la norme OEKO-TEX® 100

Composition

100% polyester teint dans la masse

Poids

375 g/m²

Résistance à l'abrasion

100.000 Cycles Martindale

Inflammabilité

BS EN 1021-1 (cigarette)

BS EN 1021-2 (allumette)

BS 7176 Low Hazard

CAL TB 117:2013

UNI 9175 Classe 1 IM

Stabilité à la lumière

7 (EN ISO 105-B02)

Résistance au frottement

humide: 4-5; sec: 4-5 (ISO 105-X12)

Für Lounge- und Polstermöbel - DE sowie Besucherstühle

Zertifiziert gemäß OEKO-TEX® Standard 100

Zusammensetzung

100% Massengefärbtes Polyester

Gewicht

375 g/m²

Abriebfestigkeit

100.000 Martindale-Zyklen

Entflammbarkeit

BS EN 1021-1 (Zigarette)

BS EN 1021-2 (Streichholz)

BS 7176 Low Hazard

CAL TB 117:2013

UNI 9175 Classe 1 IM

Lichtgeschwindigkeit

7 (EN ISO 105-B02)

Reibechtheit

nass: 4-5; trocken: 4-5 (ISO 105-X12)

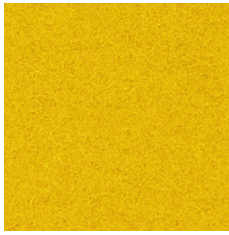
! Batch to batch variations in shade may occur within commercial tolerances.

! Des variations de teinte d'un lot à l'autre peuvent se produire dans le cadre des tolérances commerciales.

! Innerhalb der handelsüblichen Toleranzen können Farbabweichungen von Charge zu Charge auftreten.

Velito | Velito Presto

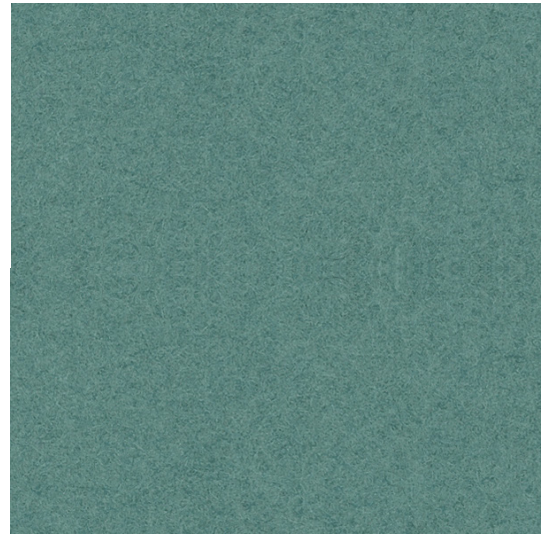
Cat. 3



*0512 GV21



*0540 GV14



*0537 GV06



*0513 GV13



*0570 GV04



*0535 GV05



*0527 GV03



*0549 GV20



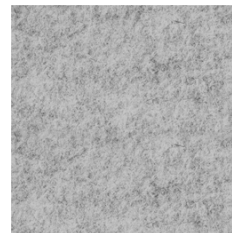
*0538 GV01



*0530 GV15



*0597 GV00



*0556 GV08



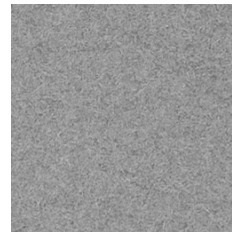
*0548 GV09



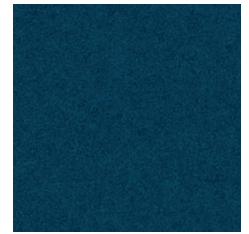
*0511 GV22



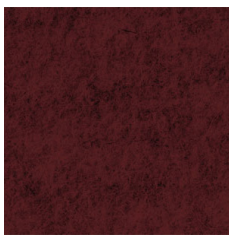
*0560 GV18



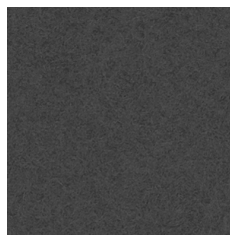
*02130 GV02



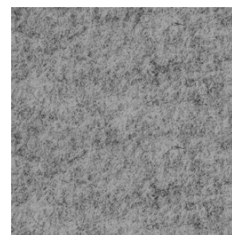
*0516 GV16



*0510 GV07



*02128 GV19



*0506 GV12



*0599 GV11

Velito



EN

Certified to OEKO-TEX® Standard 100

Composition

88% Wool, 12% Polyamide

Weight

400 g/m²

Abrasion resistance

120.000 Martindale cycles

Flammability

BS EN 1021-1 (cigarette)

BS EN 1021-2 (match)

Light fastness

6 (EN ISO 105-B02)

Fastness to rubbing

wet: 5; dry: 5 (ISO 105-X12)

FR

Certifié conforme à la norme
OEKO-TEX® 100

Composition

88% Laine, 12% Polyamide

Poids

400 g/m²

Résistance à l'abrasion

120.000 Cycles Martindale

Inflammabilité

BS EN 1021-1 (cigarette)

BS EN 1021-2 (allumette)

Stabilité à la lumière

6 (EN ISO 105-B02)

Résistance au frottement

humide: 5; sec: 5 (ISO 105-X12)

DE

Zertifiziert gemäß OEKO-TEX®
Standard 100

Zusammensetzung

88% Wolle, 12% Polyamid

Gewicht

400 g/m²

Abriebfestigkeit

120.000 Martindale-Zyklen

Entflammbarkeit

BS EN 1021-1 (Zigarette)

BS EN 1021-2 (Streichholz)

Lichtgeschwindigkeit

6 (EN ISO 105-B02)

Reibechtheit

nass: 5; trocken: 5 (ISO 105-X12)

Velito Presto



EN

Certified to OEKO-TEX® Standard 100

Composition

88% Wool, 12% Polyamide

Weight

315 g/m²

Flammability

BS EN 1021-1 (cigarette)

BS EN 1021-2 (match)

Light fastness

5-6 (EN ISO 105-B02)

Fastness to rubbing

wet: 4-5; dry: 4-5 (ISO 105-X12)

FR

Certifié conforme à la norme
OEKO-TEX® 100

Composition

88% Wool, 12% Polyamide

Poids

315 g/m²

Inflammabilité

BS EN 1021-1 (cigarette)

BS EN 1021-2 (allumette)

Stabilité à la lumière

5-6 (EN ISO 105-B02)

Résistance au frottement

humide: 4-5; sec: 4-5 (ISO 105-X12)

DE

Zertifiziert gemäß OEKO-TEX®
Standard 100

Zusammensetzung

88% Wolle, 12% Polyamid

Gewicht

315 g/m²

Entflammbarkeit

BS EN 1021-1 (Zigarette)

BS EN 1021-2 (Streichholz)

Lichtgeschwindigkeit

5-6 (EN ISO 105-B02)

Reibechtheit

nass: 4-5; trocken: 4-5 (ISO 105-X12)

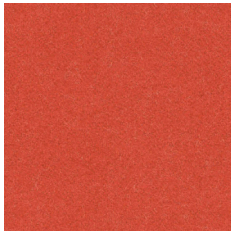
! Batch to batch variations in shade may occur within commercial tolerances.

! Des variations de teinte d'un lot à l'autre peuvent se produire dans le cadre des tolérances commerciales.

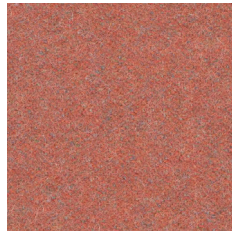
! Innerhalb der handelsüblichen Toleranzen können Farbabweichungen von Charge zu Charge auftreten.

Synergy

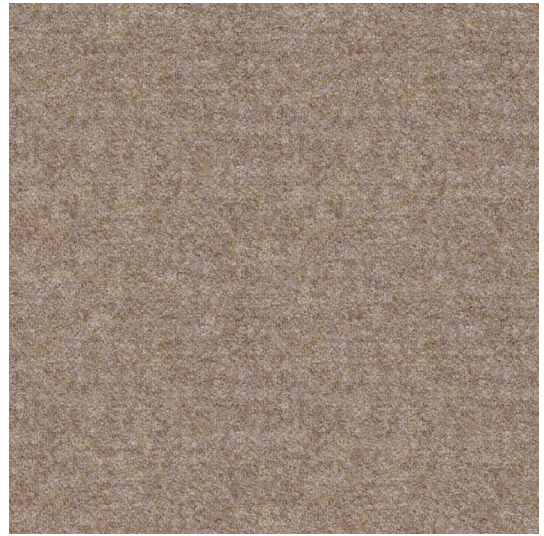
Cat. 3



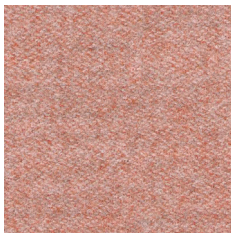
*LDS84 GS84



*LDS73 GS73



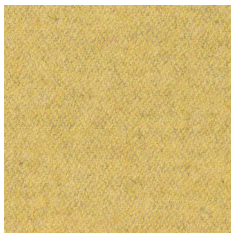
*LDS32 GS32



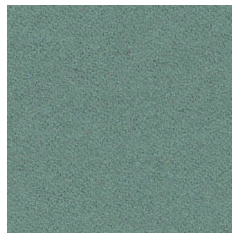
*LDS74 GS74



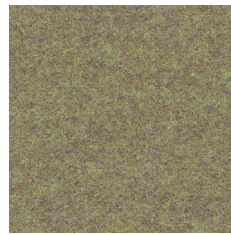
*LDS37 GS37



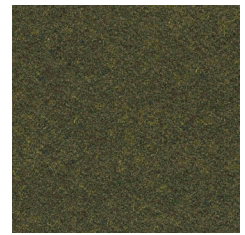
*LDS45 GS45



*LDS49 GS49



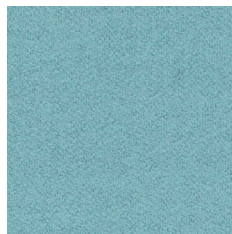
*LDS48 GS48



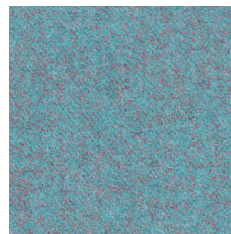
*LDS42 GS42



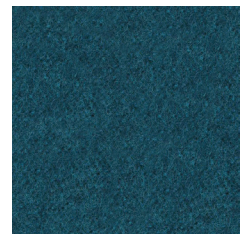
*LDS46 GS46



*LDS55 GS55



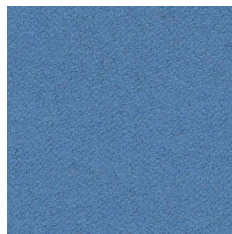
*LDS56 GS56



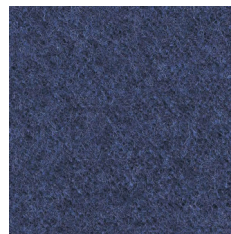
*LDS59 GS59



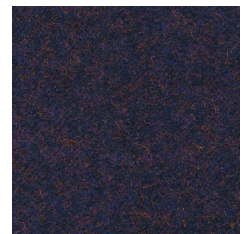
*LDS08 GS08



*LDS63 GS63



*LDS62 GS62



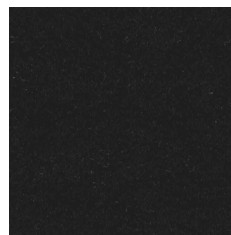
*LDS61 GS61



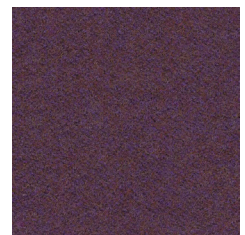
*LDS16 GS16



*LDS17 GS17



*LDS27 GS27



*LDS70 GS70



EN

Certified to the EU Ecolabel

Certified to Indoor Advantage™ "Gold"

Composition

95% Virgin Wool, 5% Polyamide

Weight

400 g/m²

Abrasion resistance

100.000 Martindale cycles

Flammability

BS EN 1021-1 (cigarette)
BS EN 1021-2 (match)
BS 7176 Low Hazard
UNI 9175 Classe 1 IM
EN 13501-1, D-s1, d0 (adhered)
CAL TB 117
ÖNORM B 3825
ÖNORM A 3800-1

Light fastness

5 (EN ISO 105-B02)

Fastness to rubbing

wet: 4; dry: 4 (ISO 105-X12)

FR

Certifié conforme à l'écolabel européen

Certifié Indoor Advantage™ Gold

Composition

95% Laine Vierge, 5% Polyamid

Poids

400 g/m²

Résistance à l'abrasion

100.000 Cycles Martindale

Inflammabilité

BS EN 1021-1 (cigarette)
BS EN 1021-2 (allumette)
BS 7176 Low Hazard
UNI 9175 Classe 1 IM
EN 13501-1, D-s1, d0 (collé)
CAL TB 117
ÖNORM B 3825
ÖNORM A 3800-1

Stabilité à la lumière

5 (EN ISO 105-B02)

Résistance au frottement

humide: 4; sec: 4 (ISO 105-X12)

DE

Zertifiziert nach EU Ecolabel

Zertifiziert gemäß Indoor Advantage™ „Gold“

Zusammensetzung

95% Schurwolle, 5% Polyamid

Gewicht

400 g/m²

Abriebfestigkeit

100.000 Martindale-Zyklen

Entflammbarkeit

BS EN 1021-1 (Zigarette)
BS EN 1021-2 (Streichholz)
BS 7176 Low Hazard
UNI 9175 Classe 1 IM
EN 13501-1, D-s1, d0 (anhaftend)
CAL TB 117
ÖNORM B 3825
ÖNORM A 3800-1

Lichtgeschwindigkeit

5 (EN ISO 105-B02)

Reibechtheit

nass: 4; trocken: 4 (ISO 105-X12)

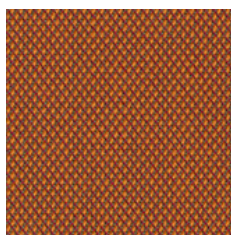
! Batch to batch variations in shade may occur within commercial tolerances.

! Des variations de teinte d'un lot à l'autre peuvent se produire dans le cadre des tolérances commerciales.

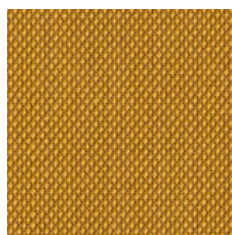
! Innerhalb der handelsüblichen Toleranzen können Farbabweichungen von Charge zu Charge auftreten.

Steelcut Trio 3

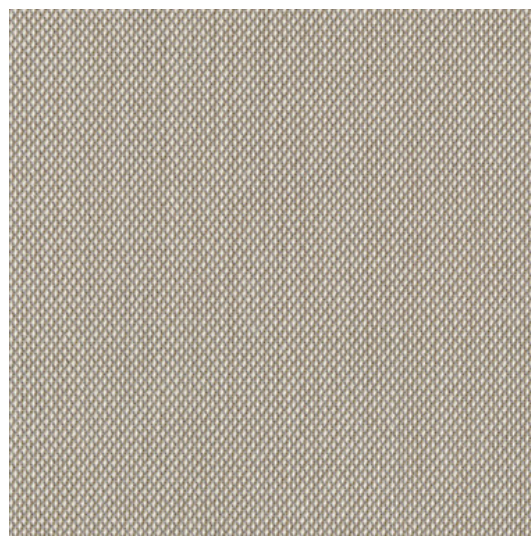
Cat. 4



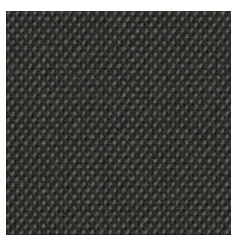
*0576 GD04



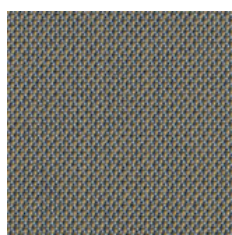
*0453 GD03



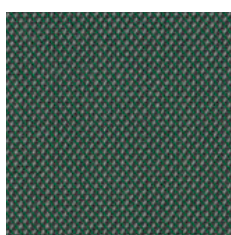
*0213 GD01



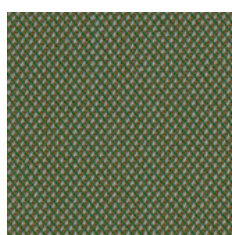
*0383 GD09



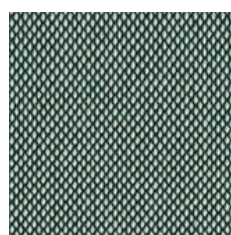
*0253 GD02



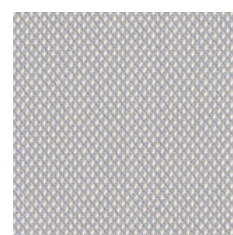
*0966 GD07



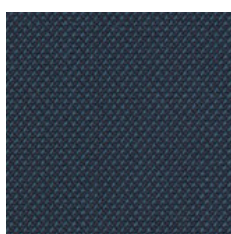
*0946 GD08



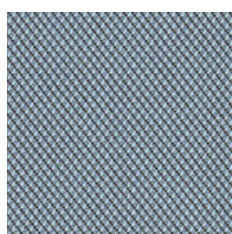
*0916 GD06



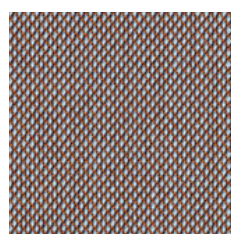
*0105 GD13



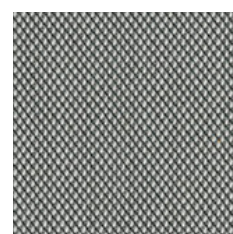
*0796 GD10



*0713 GD11



*0416 GD05



*0133 GD12

Steelcut Trio 3



EN

Composition:

90% new wool, worsted, 10% nylon

Weight:

550 g/m²

Abrasion resistance:

100.000 Martindale cycles

Flammability:

BS 5852: part 1
BS 7176 Low Hazard
EN 1021-1
EN 1021-2
NF D 60-013
NFPA 260
ÖNORM B 3825
ÖNORM A 3800-1, Q1
UNI 9175 11M
CAL TB 117-2013

Light fastness:

5-7 (EN ISO 105-B02)

Fastness to rubbing:

wet: 3-5; dry: 4-5 (EN ISO 105-X12)

Sound absorption:

ISO 11654, aw=0.70, class C

FR

Coposition

95% Laine Vierge, 5% Polyamid

Poids

550 g/m²

Résistance à l'abrasion

100.000 Cycles Martindale

Inflammabilité

BS 5852: part 1
BS 7176 Low Hazard
EN 1021-1
EN 1021-2
NF D 60-013
NFPA 260
ÖNORM B 3825
ÖNORM A 3800-1, Q1
UNI 9175 11M
CAL TB 117-2013

Stabilité à la lumière

5-7 (EN ISO 105-B02)

Résistance au frottement

humide: 3-5, sec: 4-5 (ISO 105 - X12)

Absorption acoustique

ISO 11654, aw=0,70, classe C

DE

Zusammensetzung

90% Schurwolle, Kammgarn 10% Nylon

Gewicht

550 g/m²

Abriebfestigkeit

100.000 Martindale-Zyklen

Entflammbarkeit

BS 5852: part 1
BS 7176 Low Hazard
EN 1021-1
EN 1021-2
NF D 60-013
NFPA 260
ÖNORM B 3825
ÖNORM A 3800-1, Q1
UNI 9175 11M
CAL TB 117-2013

Lichtgeschwindigkeit

5-7 (EN ISO 105-B02)

Reibechtheit

wet: 3-5; dry: 4-5 (EN ISO 105-X12)

Absorption

ISO 11654, aw=0.70, Klasse C

!

Batch to batch variations in shade may occur within commercial tolerances.

!

Des variations de teinte d'un lot à l'autre peuvent se produire dans le cadre des tolérances commerciales.

!

Innerhalb der handelsüblichen Toleranzen können Farbabweichungen von Charge zu Charge auftreten.