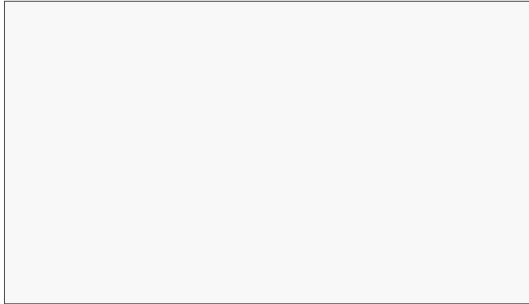


Plastic

Cat. 1



TC00 White | Blanc | Weiß



TC06 Dusty rose | Vieux rose | Altrosa



TBO3 Cloud gray | Gris nuage | Wolkengrau



TC07 Avocado green | Vert avocat | Avocadogrün



TC02 Gray | Gris | Grau



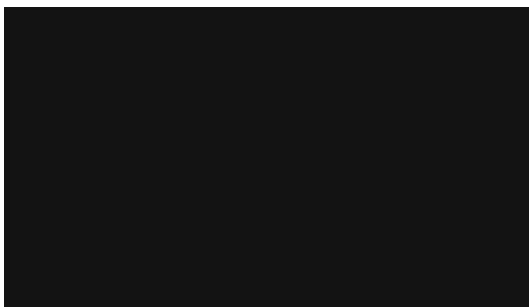
TC05 Red | Rouge | Rot



TBO2 Lava black | Noir lave | Lavaschwarz



TC03 Green | Vert | Grün



TC01 Black | Noir | Schwarz



TC04 Blue | Bleu | Blau

Plastic



Plastic — EN

UV resistant (anti-UV 2%).

Does not contain any toxic materials.

Easy cleaning and maintenance.

Plastique — FR

Résistant aux UV (anti-UV 2 %).

Ne contient pas de matières toxiques.

Nettoyage et entretien faciles.

Kunststoff — DE

UV-beständig (Anti-UV 2 %).

Enthält keine giftigen Stoffe.

Einfache Reinigung und Wartung.



Recycled plastic — EN

TB02, TB03

Made from 100% recycled materials (approx. 50% industrial and 50% post-consumer waste).

UV resistant (anti-UV 2%).

Does not contain any toxic materials.

Easy cleaning and maintenance.

Plastique recyclé — FR

TB02, TB03

Fabriqué à partir de matériaux 100 % recyclés (environ 50 % de déchets industriels et 50 % de déchets post-consommation).

Résistant aux UV (anti-UV 2 %).

Ne contient pas de matières toxiques.

Nettoyage et entretien faciles.

Recycelter Kunststoff — DE

TB02, TB03

Hergestellt aus 100 % recycelten Materialien (ca. 50 % Industrie- und 50 % Verbraucher-Abfälle).

UV-beständig (Anti-UV 2 %).

Enthält keine giftigen Stoffe.

Einfache Reinigung und Wartung.

! —
Batch to batch variations in shade may occur within commercial tolerances.

! —
Des variations de teinte d'un lot à l'autre peuvent se produire dans le cadre des tolérances commerciales.

! —
Innerhalb der handelsüblichen Toleranzen können Farbabweichungen von Charge zu Charge auftreten.

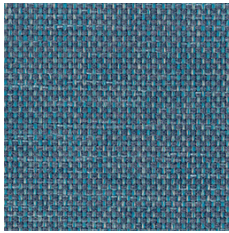
! —
As this is recycled material, some small marks and imperfections may be present.

! —
Comme il s'agit de matériaux recyclés, certaines petites marques et imperfections peuvent être présentes.

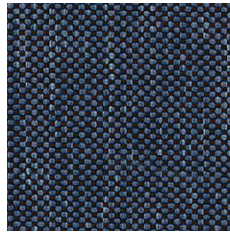
! —
Da es sich um recyceltes Material handelt, können einige kleine Flecken und Unvollkommenheiten vorhanden sein.

Berta

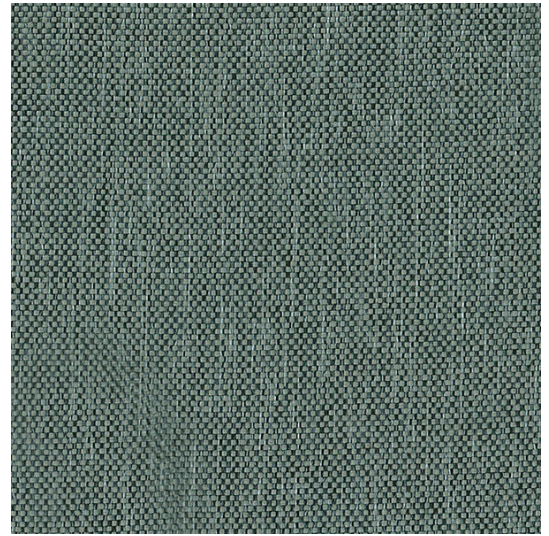
Cat. 1



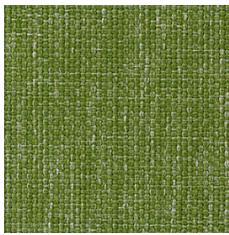
GA06



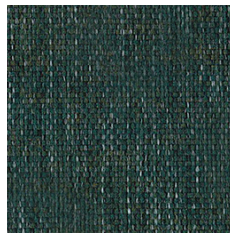
GA09



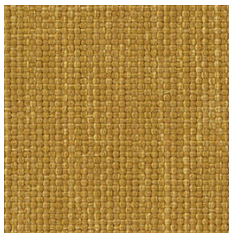
GA12



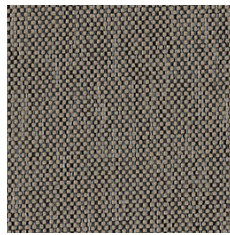
GA18



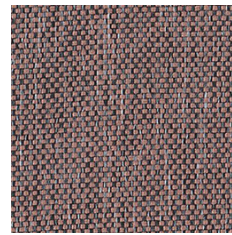
GA11



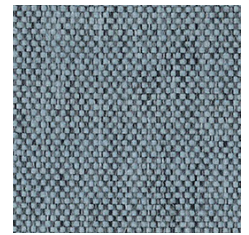
GA07



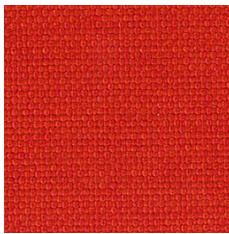
GA13



GA14



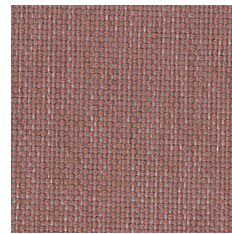
GA16



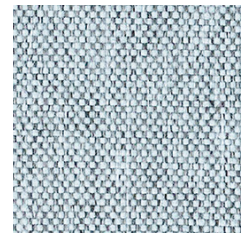
GA15



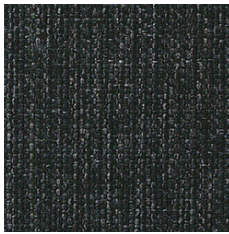
GA08



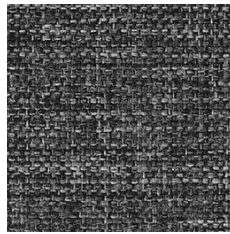
GA10



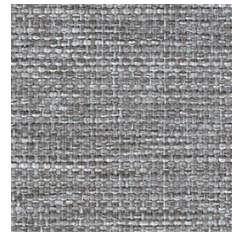
GA17



GA00



GA01



GA02



GA03



For chairs and soft seating — EN

Certified to OEKO-TEX® Standard 100

Composition
100% Polyester

Weight
320 g/m²

Abrasion resistance
150.000 Martindale cycles

Flammability
BS EN 1021-1 (cigarette)
BS 5852: part 1

BS EN 1021-2

Light fastness
6 (EN ISO 105-B02, EN ISO 105-A01)

Fastness to rubbing
wet: 4-5; dry: 5 (ISO 105-X12)

Pour sièges et sièges Lounge — FR

Certifié conforme à la norme OEKO-TEX® 100

Composition
100% Polyester

Poids
320 g/m²

Résistance à l'abrasion
150.000 Cycles Martindale

Inflammabilité
BS EN 1021-1 (cigarette)
BS 5852: part 1

BS EN 1021-2

Stabilité à la lumière
6 (EN ISO 105-B02, EN ISO 105-A01)

Résistance au frottement
humide: 4-5; sec: 5 (ISO 105-X12)

Für Stühle und weiches Sitzen — DE

Zertifiziert gemäß OEKO-TEX® Standard 100

Zusammensetzung
100% Polyester

Gewicht
320 g/m²

Abriebfestigkeit
150.000 Martindale-Zyklen

Entflammbarkeit
BS EN 1021-1 (Zigarette)
BS 5852: part 1

BS EN 1021-2

Lichtgeschwindigkeit
6 (EN ISO 105-B02, EN ISO 105-A01)

Reibechtheit
nass: 4-5; trocken: 5 (ISO 105-X12)

For screens — EN

Certified to OEKO-TEX® Standard 100

Composition
100% Polyester

Weight
340 g/m²

Abrasion resistance
80.000 Martindale cycles

Flammability
BS EN 1021-1 (cigarette)

Light fastness
6 (EN ISO 105-B02, EN ISO 105-A01)

Fastness to rubbing
wet: 4-5; dry: 5 (ISO 105-X12)

Pour écrans — FR

Certifié conforme à la norme OEKO-TEX® 100

Composition
100% Polyester

Poids
340 g/m²

Résistance à l'abrasion
80.000 Cycles Martindale

Inflammabilité
BS EN 1021-1 (cigarette)

Stabilité à la lumière
6 (EN ISO 105-B02, EN ISO 105-A01)

Résistance au frottement
humide: 4-5; sec: 5 (ISO 105-X12)

Für Abschirmungen — DE

Zertifiziert gemäß OEKO-TEX® Standard 100

Zusammensetzung
100% Polyester

Gewicht
340 g/m²

Abriebfestigkeit
80.000 Martindale-Zyklen

Entflammbarkeit
BS EN 1021-1 (Zigarette)

Lichtgeschwindigkeit
6 (EN ISO 105-B02, EN ISO 105-A01)

Reibechtheit
nass: 4-5; trocken: 5 (ISO 105-X12)

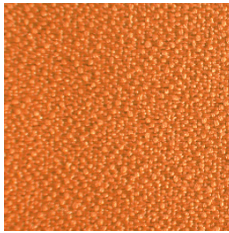
! —————
Batch to batch variations in shade may occur within commercial tolerances.

! —————
Des variations de teinte d'un lot à l'autre peuvent se produire dans le cadre des tolérances commerciales.

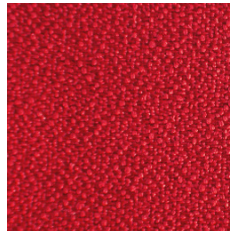
! —————
Innerhalb der handelsüblichen Toleranzen können Farbabweichungen von Charge zu Charge auftreten.

Bondai

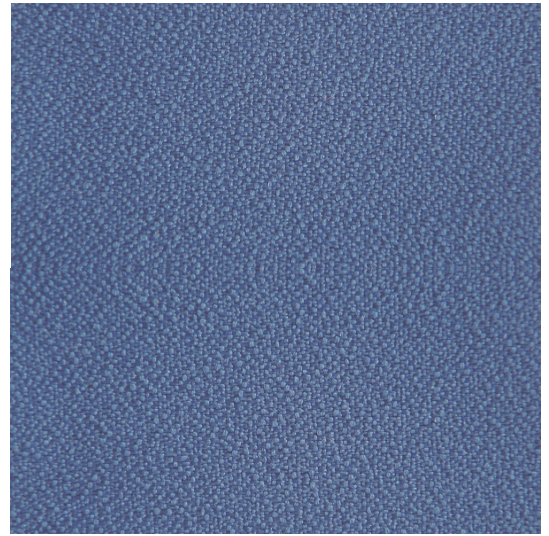
Cat. 1



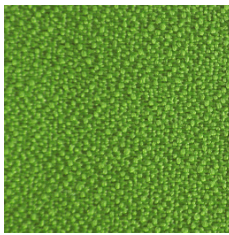
GE03



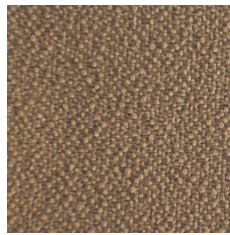
GE10



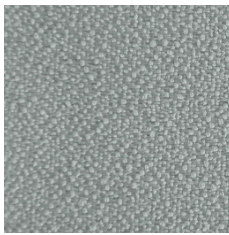
GE11



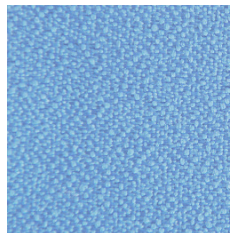
GE08



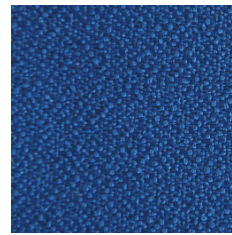
GE07



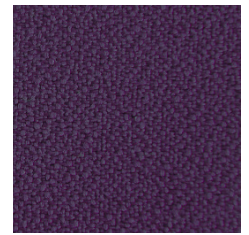
GE02



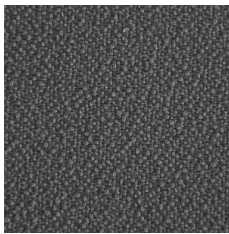
GE06



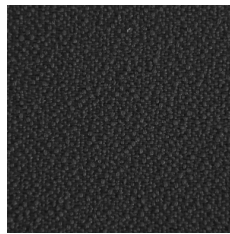
GE04



GE05



GE09



GE01

Bondai



EN

Certified to OEKO-TEX® Standard 100

Composition

100% Polyester

Weight

250 g/m²

Abrasion resistance

150.000 Martindale cycles

Flammability

BS EN 1021-1 (cigarette)
BS EN 1021-2 (match)
BS 5852: part 2 (Crib 5)
BS 7176 Medium Hazard
CAL TB 117
EN 13501-1, B-s1, d0 (adhered)
UNI 9175 & UNI 9175/FA1 Classe 1 IM

Light fastness

6 (EN ISO 105-B02)

Fastness to rubbing

wet: 5; dry: 5 (ISO 105-X12)

FR

Certifié conforme à la norme
OEKO-TEX® 100

Composition

100% Polyester

Poids

250 g/m²

Résistance à l'abrasion

150.000 Cycles de Martindale

Inflammabilité

BS EN 1021-1 (cigarette)
BS EN 1021-2 (allumette)
BS 5852: part 2 (Crib 5)
BS 7176 Medium Hazard
CAL TB 117
EN 13501-1, B-s1, d0 (collé)
UNI 9175 & UNI 9175/FA1 Classe 1 IM

Stabilité à la lumière

6 (EN ISO 105-B02)

Résistance au frottement

humide: 5; sec: 5 (ISO 105-X12)

DE

Zertifiziert gemäß OEKO-TEX®
Standard 100

Zusammensetzung

100% Polyester

Gewicht

250 g/m²

Abriebfestigkeit

150.000 Martindale-Zyklen

Entflammbarkeit

BS EN 1021-1 (Zigarette)
BS EN 1021-2 (Streichholz)
BS 5852: part 2 (Crib 5)
BS 7176 Medium Hazard
CAL TB 117
EN 13501-1, B-s1, d0 (anhaftend)
UNI 9175 & UNI 9175/FA1 Classe 1 IM

Lichtgeschwindigkeit

6 (EN ISO 105-B02)

Reibechtheit

nass: 5; trocken: 5 (ISO 105-X12)

!

Batch to batch variations in shade may occur within commercial tolerances.

!

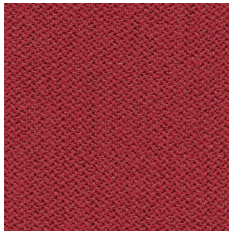
Des variations de teinte d'un lot à l'autre peuvent se produire dans le cadre des tolérances commerciales.

!

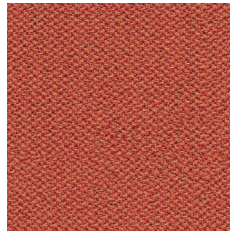
Innerhalb der handelsüblichen Toleranzen können Farbabweichungen von Charge zu Charge auftreten.

Era

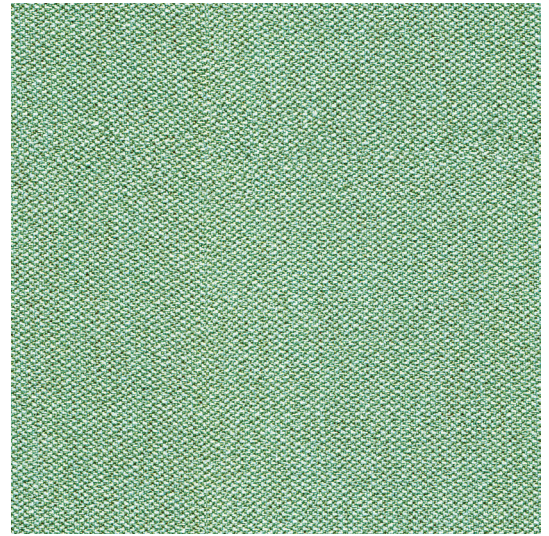
Cat. 1



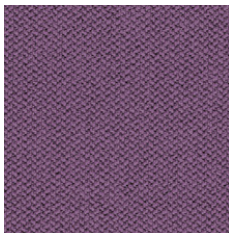
* CSE28 GC28



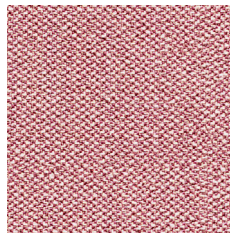
* CSE29 GC29



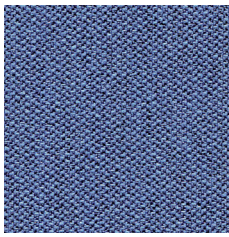
* CSE36 GC36



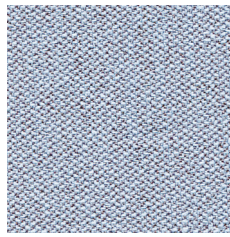
* CSE09 GC09



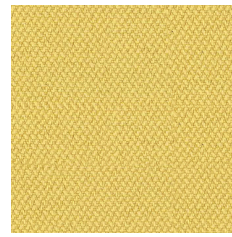
* CSE24 GC24



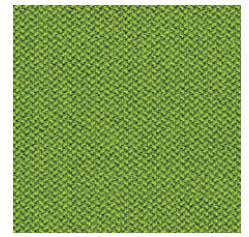
* CSE42 GC42



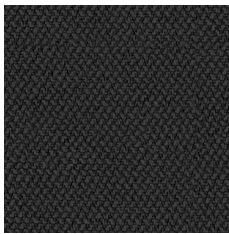
* CSE39 GC39



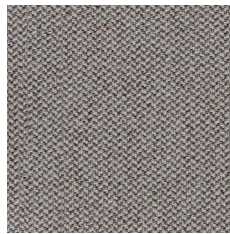
* CSE03 GC03



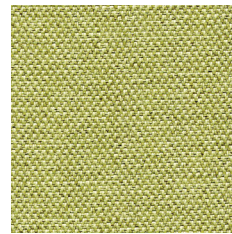
* CSE16 GC16



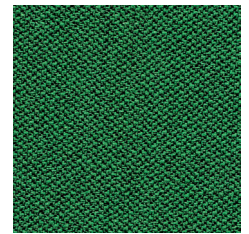
* CSE14 GC14



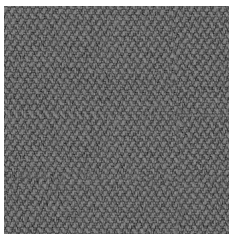
* CSE02 GC02



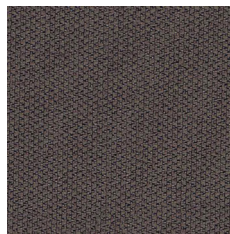
* CSE34 GC34



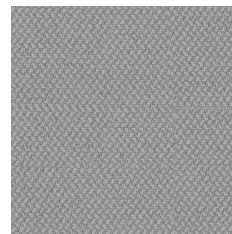
* CSE35 GC35



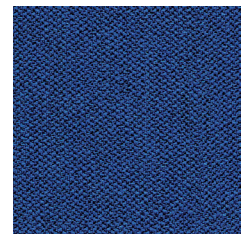
* CSE13 GC13



* CSE21 GC21



* CSE11 GC11



* CSE40 GC40



EN

Certified to OEKO-TEX® Standard 100

Certified to Indoor Advantage™ “Gold”

Non metallic dyestuffs

Composition

100% Polyester

Weight

320 g/m²

Abrasion resistance

100.000 Martindale cycles

Flammability

BS EN 1021-1 (cigarette)

BS EN 1021-2 (match)

BS 7176 Low Hazard

EN 13501-1, B-s1, d0 (adhered)

EN 13501-1, C-s1, d0 (wrapped rockwool)

CAL TB 117

Light fastness

5 (EN ISO 105-B02)

Fastness to rubbing

wet: 4; dry: 4 (ISO 105-X12)

FR

Certifié conforme à la norme
OEKO-TEX® 100

Certifié Indoor Advantage™ Gold

Colorants non métalliques

Composition

100% Polyester

Poids

320 g/m²

Résistance à l'abrasion

100.000 Cycles Martindale

Inflammabilité

BS EN 1021-1 (cigarette)

BS EN 1021-2 (allumette)

BS 7176 Low Hazard

EN 13501-1, B-s1, d0 (collé)

EN 13501-1, C-s1, d0 (recouvert de laine
de roche)

CAL TB 117

Stabilité à la lumière

5 (EN ISO 105-B02)

Résistance au frottement

humide: 4; sec: 4 (ISO 105-X12)

DE

Zertifiziert gemäß OEKO-TEX®
Standard 100

Zertifiziert gemäß Indoor
Advantage™ „Gold“

Nichtmetallische Farbstoffe

Zusammensetzung

100% Polyester

Gewicht

320 g/m²

Abriebfestigkeit

100.000 Martindale-Zyklen

Entflammbarkeit

BS EN 1021-1 (Zigarette)

BS EN 1021-2 (Streichholz)

BS 7176 Low Hazard

EN 13501-1, B-s1, d0 (anhaftend)

EN 13501-1, C-s1, d0 (umwickelte
Mineralwolle)

CAL TB 117

Lichtgeschwindigkeit

5 (EN ISO 105-B02)

Reibechtheit

nass: 4; trocken: 4 (ISO 105-X12)

!

Batch to batch variations in shade may occur within commercial tolerances.

!

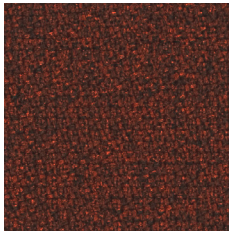
Des variations de teinte d'un lot à l'autre peuvent se produire dans le cadre des tolérances commerciales.

!

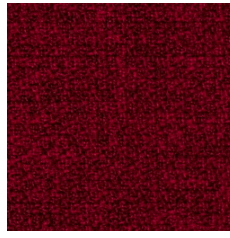
Innerhalb der handelsüblichen Toleranzen können Farbabweichungen von Charge zu Charge auftreten.

Step | Step Melange

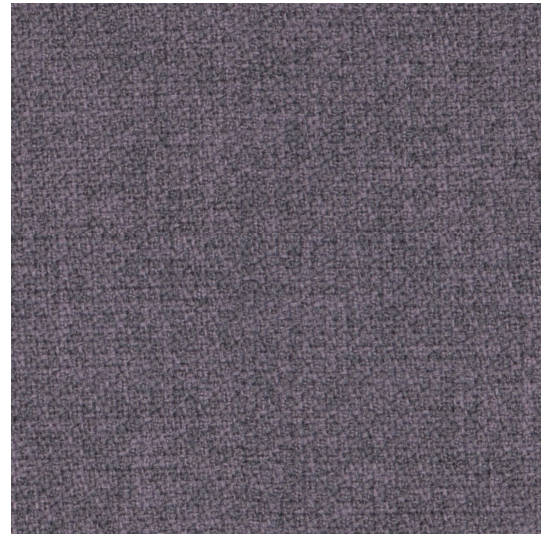
Cat. 2 | Cat.3



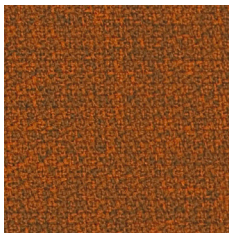
*63075 GL24



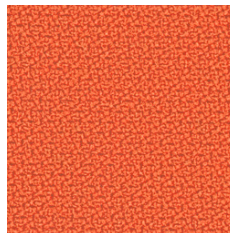
*64013 GL18



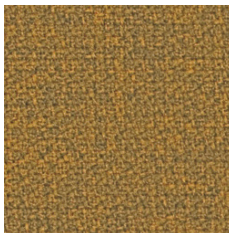
*65093 GL83



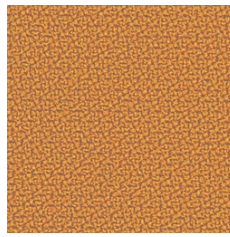
*63082 GL10



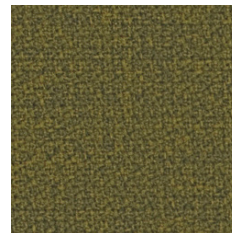
*63082 GL11



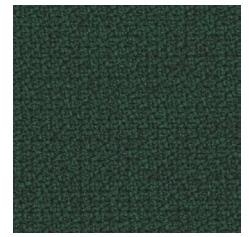
*62057 GL16



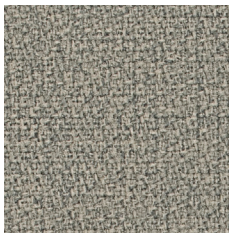
*62057 GL17



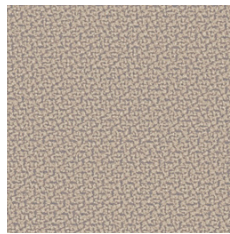
*68119 GL08



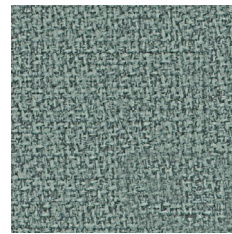
*68161 GL26



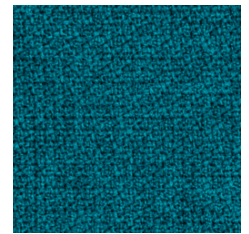
*61104 GL70



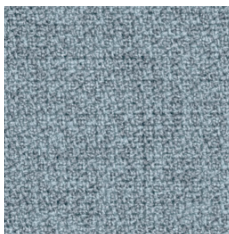
*61149 GL15



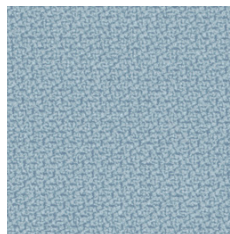
*68118 GL50



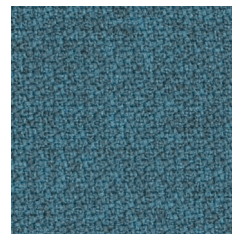
*67007 GL02



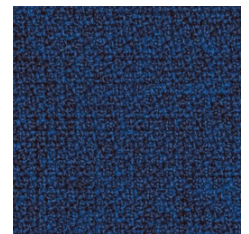
*67004 GL06



*67004 GL07



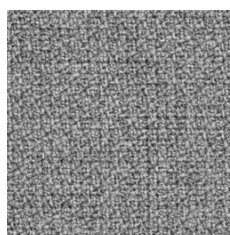
*67072 GL28



*66149 GL04



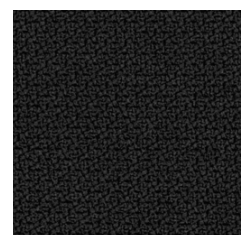
*60011 GL34



*60004 GL12



*66019 GL20



*60999 GL01

Step | Step Melange



EN

Certified to OEKO-TEX® Standard 100

Certified to the EU Ecolabel

Composition

100% Trevira CS® Flame Retardant Polyester

Weight

470 g/m²

Abrasion resistance

100.000 Martindale cycles

Flammability

BS EN 1021-1 (cigarette)

BS EN 1021-2 (match)

BS 5852: part 1

BS 5852: part 2 (Crib 5)

BS 7176 Medium Hazard

UNI 9175 & UNI 9175/FA1 Classe 1 IM

DIN 4102 B1

NFP-P-92-503-512 M1

ÖNORM B 3825-B1-3800-Q1 UK

AM 18 - NF D 60-013 (only for fabric)

CA TB 117-2013

DIN EN 13501-1 B-s1, d0

Light fastness

5-7 (EN ISO 105-B02)

Fastness to rubbing

wet: 4-5; dry: 4-5 (ISO 105-X12)

FR

Certifié conforme à la norme OEKO-TEX® 100

Certifié conforme à l'écolabel européen

Composition

100% Trevira CS® Polyester Inflammable

Poids

470 g/m²

Résistance à l'abrasion

100.000 Cycles de Martindale

Inflammabilité

BS EN 1021-1 (cigarette)

BS EN 1021-2 (allumette)

BS 5852: part 1

BS 5852: part 2 (Crib 5)

BS 7176 Medium Hazard

UNI 9175 & UNI 9175/FA1 Classe 1 IM

DIN 4102 B1

NFP-P-92-503-512 M1

ÖNORM B 3825-B1-3800-Q1 UK

AM 18 - NF D 60-013 (uniquement pour les tissus)

CA TB 117-2013

DIN EN 13501-1 B-s1, d0

Stabilité à la lumière

5-7 (EN ISO 105-B02)

Résistance au frottement

humide: 4-5; sec: 4-5 (ISO 105-X12)

DE

Zertifiziert gemäß OEKO-TEX® Standard 100

Zertifiziert nach EU Ecolabel

Zusammensetzung

100% Trevira CS® Flammhemmendes Polyester

Gewicht

470 g/m²

Abriebfestigkeit

100.000 Martindale-Zyklen

Entflammbarkeit

BS EN 1021-1 (Zigarette)

BS EN 1021-2 (Streichholz)

BS 5852: part 1

BS 5852: part 2 (Crib 5)

BS 7176 Medium Hazard

UNI 9175 & UNI 9175/FA1 Classe 1 IM

DIN 4102 B1

NFP-P-92-503-512 M1

ÖNORM B 3825-B1-3800-Q1 UK

AM 18 - NF D 60-013 (nur für Stoff)

CA TB 117-2013

DIN EN 13501-1 B-s1, d0

Lichtgeschwindigkeit

5-7 (EN ISO 105-B02)

Reibechtheit

nass: 4-5; trocken: 4-5 (ISO 105-X12)

!

Cat. 2 applies to seating category products and Cat. 3 applies to screens and panels.

!

Batch to batch variations in shade may occur within commercial tolerances.

!

La cat. 2 s'applique aux produits de la catégorie sièges et la cat. 3 s'applique aux écrans et aux panneaux.

!

Des variations de teinte d'un lot à l'autre peuvent se produire dans le cadre des tolérances commerciales.

!

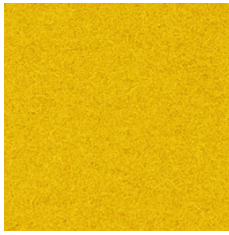
Kat. 2 gilt für Produkte der Kategorie Sitzmöbel und Kat. 3 gilt für Trennwände und Platten.

!

Innerhalb der handelsüblichen Toleranzen können Farbabweichungen von Charge zu Charge auftreten.

Velito | Velito Presto

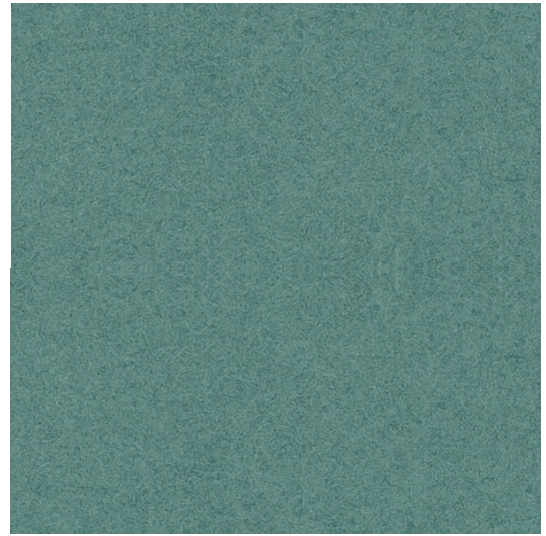
Cat. 3



*0512 GV21



*0540 GV14



*0537 GV06



*0513 GV13



*0570 GV04



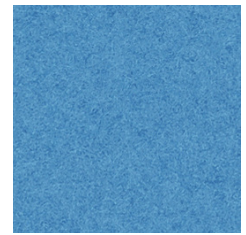
*0535 GV05



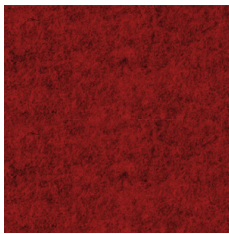
*0527 GV03



*0549 GV20



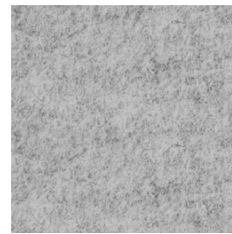
*0538 GV01



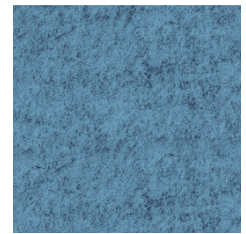
*0530 GV15



*0597 GV00



*0556 GV08



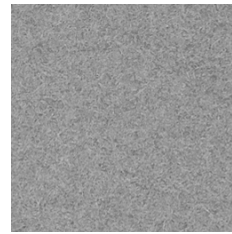
*0548 GV09



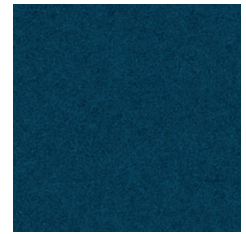
*0511 GV22



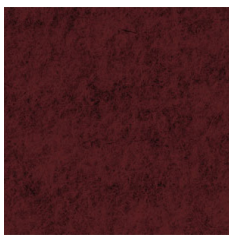
*0560 GV18



*02130 GV02



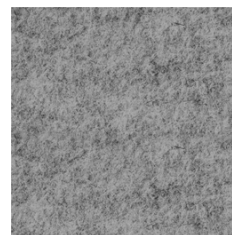
*0516 GV16



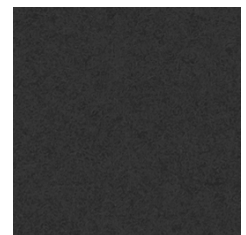
*0510 GV07



*02128 GV19



*0506 GV12



*0599 GV11

Velito



EN

Certified to OEKO-TEX® Standard 100

Composition

88% Wool, 12% Polyamide

Weight

400 g/m²

Abrasion resistance

120.000 Martindale cycles

Flammability

BS EN 1021-1 (cigarette)

BS EN 1021-2 (match)

Light fastness

6 (EN ISO 105-B02)

Fastness to rubbing

wet: 5; dry: 5 (ISO 105-X12)

FR

Certifié conforme à la norme
OEKO-TEX® 100

Composition

88% Laine, 12% Polyamide

Poids

400 g/m²

Résistance à l'abrasion

120.000 Cycles Martindale

Inflammabilité

BS EN 1021-1 (cigarette)

BS EN 1021-2 (allumette)

Stabilité à la lumière

6 (EN ISO 105-B02)

Résistance au frottement

humide: 5; sec: 5 (ISO 105-X12)

DE

Zertifiziert gemäß OEKO-TEX®
Standard 100

Zusammensetzung

88% Wolle, 12% Polyamid

Gewicht

400 g/m²

Abriebfestigkeit

120.000 Martindale-Zyklen

Entflammbarkeit

BS EN 1021-1 (Zigarette)

BS EN 1021-2 (Streichholz)

Lichtgeschwindigkeit

6 (EN ISO 105-B02)

Reibechtheit

nass: 5; trocken: 5 (ISO 105-X12)

Velito Presto



EN

Certified to OEKO-TEX® Standard 100

Composition

88% Wool, 12% Polyamide

Weight

315 g/m²

Flammability

BS EN 1021-1 (cigarette)

BS EN 1021-2 (match)

Light fastness

5-6 (EN ISO 105-B02)

Fastness to rubbing

wet: 4-5; dry: 4-5 (ISO 105-X12)

FR

Certifié conforme à la norme
OEKO-TEX® 100

Composition

88% Wool, 12% Polyamide

Poids

315 g/m²

Inflammabilité

BS EN 1021-1 (cigarette)

BS EN 1021-2 (allumette)

Stabilité à la lumière

5-6 (EN ISO 105-B02)

Résistance au frottement

humide: 4-5; sec: 4-5 (ISO 105-X12)

DE

Zertifiziert gemäß OEKO-TEX®
Standard 100

Zusammensetzung

88% Wolle, 12% Polyamid

Gewicht

315 g/m²

Entflammbarkeit

BS EN 1021-1 (Zigarette)

BS EN 1021-2 (Streichholz)

Lichtgeschwindigkeit

5-6 (EN ISO 105-B02)

Reibechtheit

nass: 4-5; trocken: 4-5 (ISO 105-X12)

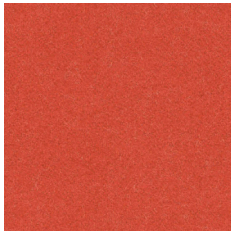
! Batch to batch variations in shade may occur within commercial tolerances.

! Des variations de teinte d'un lot à l'autre peuvent se produire dans le cadre des tolérances commerciales.

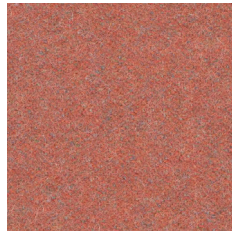
! Innerhalb der handelsüblichen Toleranzen können Farbabweichungen von Charge zu Charge auftreten.

Synergy

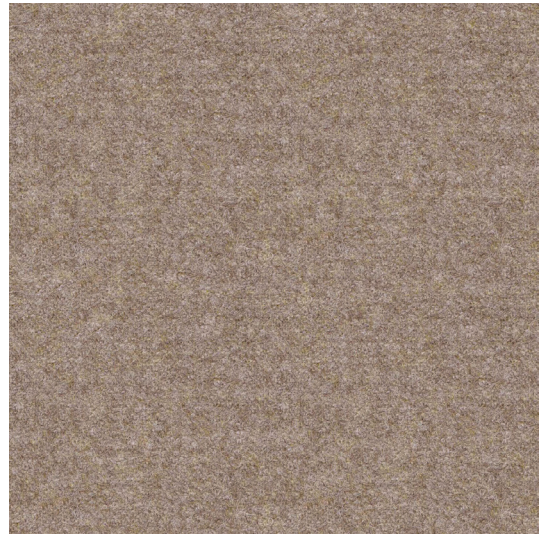
Cat. 3



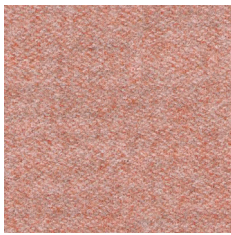
*LDS84 GS84



*LDS73 GS73



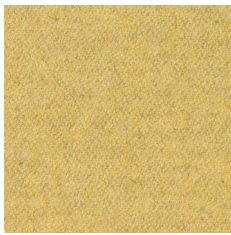
*LDS32 GS32



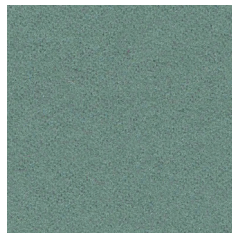
*LDS74 GS74



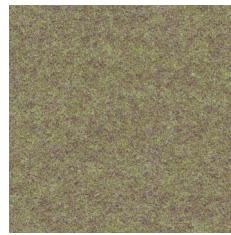
*LDS37 GS37



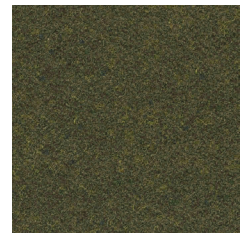
*LDS45 GS45



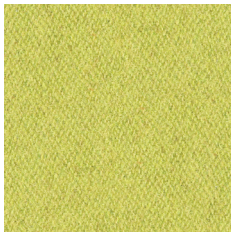
*LDS49 GS49



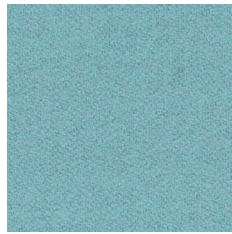
*LDS48 GS48



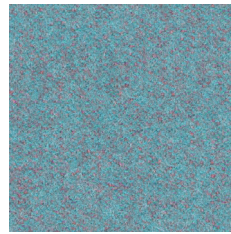
*LDS42 GS42



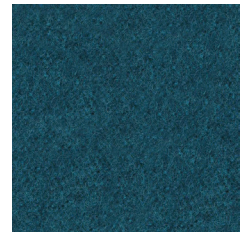
*LDS46 GS46



*LDS55 GS55



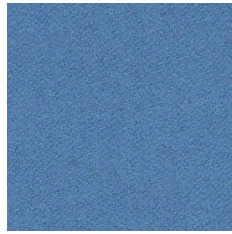
*LDS56 GS56



*LDS59 GS59



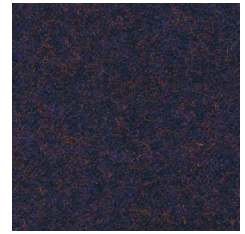
*LDS08 GS08



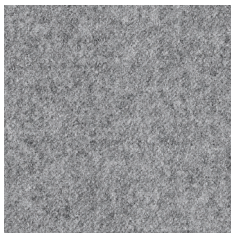
*LDS63 GS63



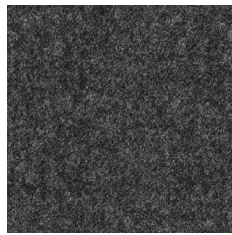
*LDS62 GS62



*LDS61 GS61



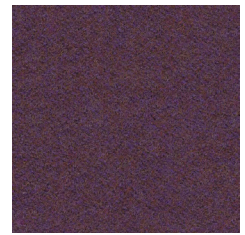
*LDS16 GS16



*LDS17 GS17



*LDS27 GS27



*LDS70 GS70



EN

Certified to the EU Ecolabel

Certified to Indoor Advantage™ "Gold"

Composition

95% Virgin Wool, 5% Polyamide

Weight

400 g/m²

Abrasion resistance

100.000 Martindale cycles

Flammability

BS EN 1021-1 (cigarette)
BS EN 1021-2 (match)
BS 7176 Low Hazard
UNI 9175 Classe 1 IM
EN 13501-1, D-s1, d0 (adhered)
CAL TB 117
ÖNORM B 3825
ÖNORM A 3800-1

Light fastness

5 (EN ISO 105-B02)

Fastness to rubbing

wet: 4; dry: 4 (ISO 105-X12)

FR

Certifié conforme à l'écolabel européen

Certifié Indoor Advantage™ Gold

Composition

95% Laine Vierge, 5% Polyamid

Poids

400 g/m²

Résistance à l'abrasion

100.000 Cycles Martindale

Inflammabilité

BS EN 1021-1 (cigarette)
BS EN 1021-2 (allumette)
BS 7176 Low Hazard
UNI 9175 Classe 1 IM
EN 13501-1, D-s1, d0 (collé)
CAL TB 117
ÖNORM B 3825
ÖNORM A 3800-1

Stabilité à la lumière

5 (EN ISO 105-B02)

Résistance au frottement

humide: 4; sec: 4 (ISO 105-X12)

DE

Zertifiziert nach EU Ecolabel

Zertifiziert gemäß Indoor Advantage™ „Gold“

Zusammensetzung

95% Schurwolle, 5% Polyamid

Gewicht

400 g/m²

Abriebfestigkeit

100.000 Martindale-Zyklen

Entflammbarkeit

BS EN 1021-1 (Zigarette)
BS EN 1021-2 (Streichholz)
BS 7176 Low Hazard
UNI 9175 Classe 1 IM
EN 13501-1, D-s1, d0 (anhaftend)
CAL TB 117
ÖNORM B 3825
ÖNORM A 3800-1

Lichtgeschwindigkeit

5 (EN ISO 105-B02)

Reibechtheit

nass: 4; trocken: 4 (ISO 105-X12)

! Batch to batch variations in shade may occur within commercial tolerances.

! Des variations de teinte d'un lot à l'autre peuvent se produire dans le cadre des tolérances commerciales.

! Innerhalb der handelsüblichen Toleranzen können Farbabweichungen von Charge zu Charge auftreten.