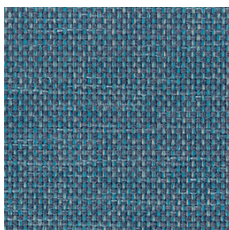


# Berta

Cat. 1

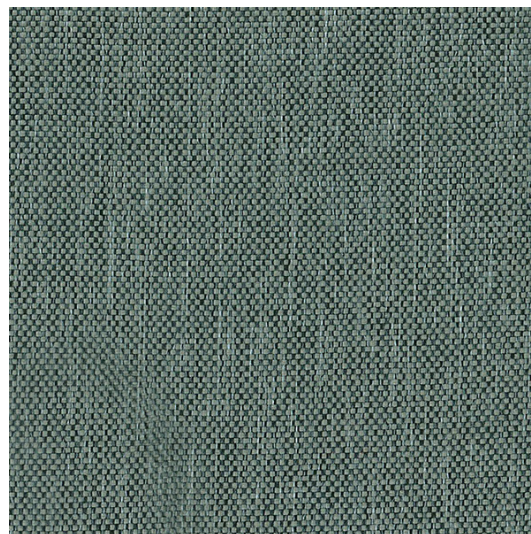
---



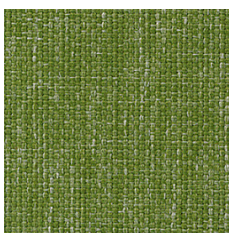
GA06



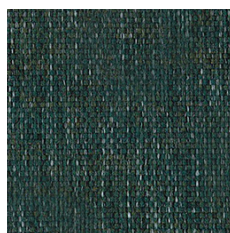
GA09



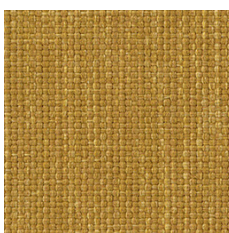
GA12



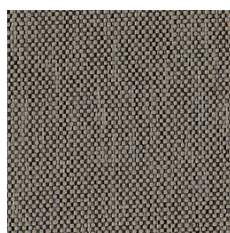
GA18



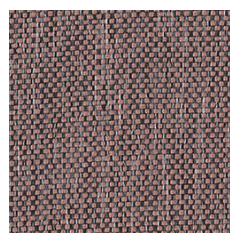
GA11



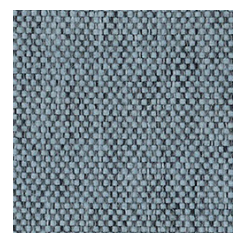
GA07



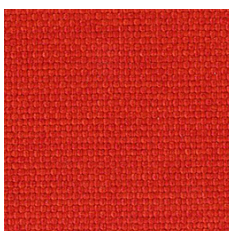
GA13



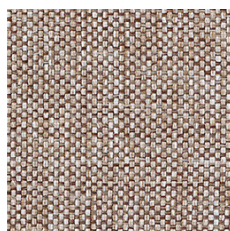
GA14



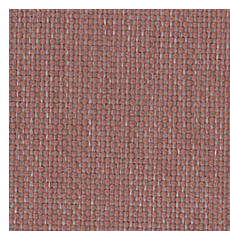
GA16



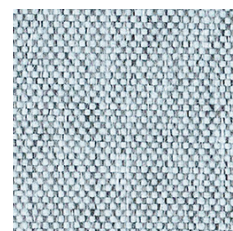
GA15



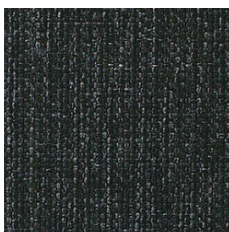
GA08



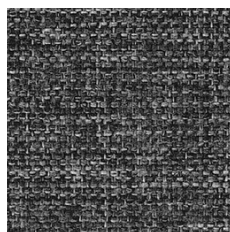
GA10



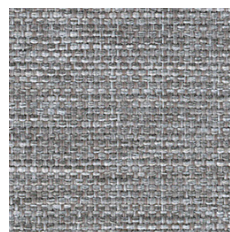
GA17



GA00



GA01



GA02



GA03



## For chairs and soft seating — EN

Certified to OEKO-TEX® Standard 100

**Composition**  
100% Polyester

**Weight**  
320 g/m<sup>2</sup>

**Abrasion resistance**  
150.000 Martindale cycles

**Flammability**  
BS EN 1021-1 (cigarette)  
BS 5852: part 1

BS EN 1021-2

**Light fastness**  
6 (EN ISO 105-B02, EN ISO 105-A01)

**Fastness to rubbing**  
wet: 4-5; dry: 5 (ISO 105-X12)

## Pour sièges et sièges Lounge — FR

Certifié conforme à la norme OEKO-TEX® 100

**Composition**  
100% Polyester

**Poids**  
320 g/m<sup>2</sup>

**Résistance à l'abrasion**  
150.000 Cycles Martindale

**Inflammabilité**  
BS EN 1021-1 (cigarette)  
BS 5852: part 1

BS EN 1021-2

**Stabilité à la lumière**  
6 (EN ISO 105-B02, EN ISO 105-A01)

**Résistance au frottement**  
humide: 4-5; sec: 5 (ISO 105-X12)

## Für Stühle und weiches Sitzen — DE

Zertifiziert gemäß OEKO-TEX® Standard 100

**Zusammensetzung**  
100% Polyester

**Gewicht**  
320 g/m<sup>2</sup>

**Abriebfestigkeit**  
150.000 Martindale-Zyklen

**Entflammbarkeit**  
BS EN 1021-1 (Zigarette)  
BS 5852: part 1

BS EN 1021-2

**Lichtgeschwindigkeit**  
6 (EN ISO 105-B02, EN ISO 105-A01)

**Reibechtheit**  
nass: 4-5; trocken: 5 (ISO 105-X12)

## For screens — EN

Certified to OEKO-TEX® Standard 100

**Composition**  
100% Polyester

**Weight**  
340 g/m<sup>2</sup>

**Abrasion resistance**  
80.000 Martindale cycles

**Flammability**  
BS EN 1021-1 (cigarette)

**Light fastness**  
6 (EN ISO 105-B02, EN ISO 105-A01)

**Fastness to rubbing**  
wet: 4-5; dry: 5 (ISO 105-X12)

## Pour écrans — FR

Certifié conforme à la norme OEKO-TEX® 100

**Composition**  
100% Polyester

**Poids**  
340 g/m<sup>2</sup>

**Résistance à l'abrasion**  
80.000 Cycles Martindale

**Inflammabilité**  
BS EN 1021-1 (cigarette)

**Stabilité à la lumière**  
6 (EN ISO 105-B02, EN ISO 105-A01)

**Résistance au frottement**  
humide: 4-5; sec: 5 (ISO 105-X12)

## Für Abschirmungen — DE

Zertifiziert gemäß OEKO-TEX® Standard 100

**Zusammensetzung**  
100% Polyester

**Gewicht**  
340 g/m<sup>2</sup>

**Abriebfestigkeit**  
80.000 Martindale-Zyklen

**Entflammbarkeit**  
BS EN 1021-1 (Zigarette)

**Lichtgeschwindigkeit**  
6 (EN ISO 105-B02, EN ISO 105-A01)

**Reibechtheit**  
nass: 4-5; trocken: 5 (ISO 105-X12)

! —————  
Batch to batch variations in shade may occur within commercial tolerances.

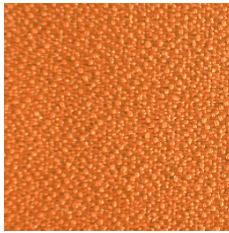
! —————  
Des variations de teinte d'un lot à l'autre peuvent se produire dans le cadre des tolérances commerciales.

! —————  
Innerhalb der handelsüblichen Toleranzen können Farbabweichungen von Charge zu Charge auftreten.

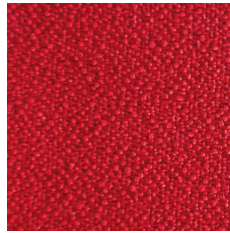
# Bondai

Cat. 1

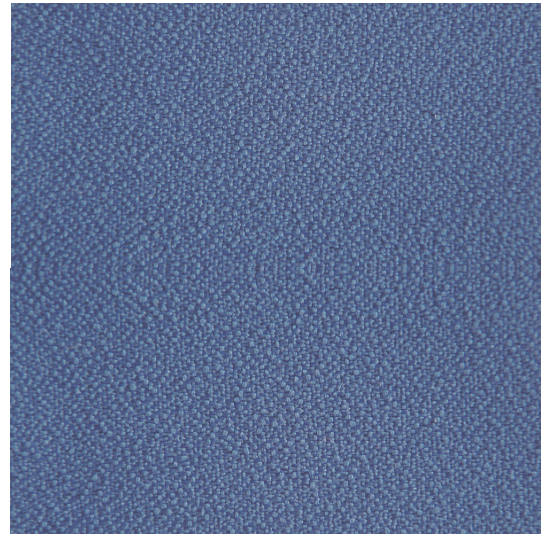
---



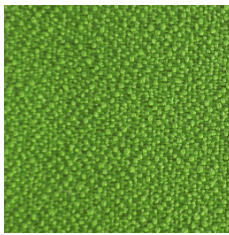
GE03



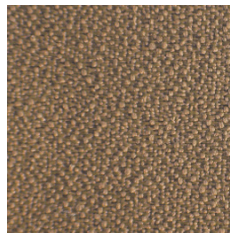
GE10



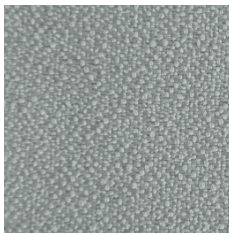
GE11



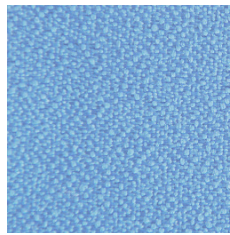
GE08



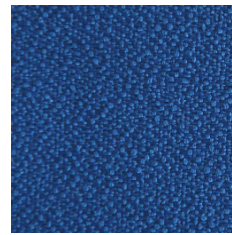
GE07



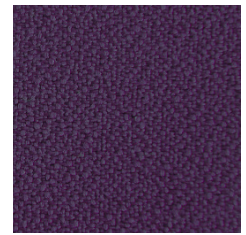
GE02



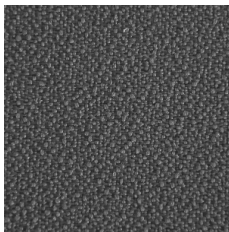
GE06



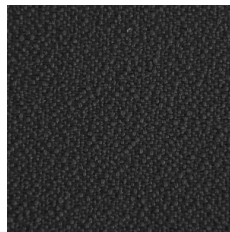
GE04



GE05



GE09



GE01

# Bondai



EN

Certified to OEKO-TEX® Standard 100

## Composition

100% Polyester

## Weight

250 g/m<sup>2</sup>

## Abrasion resistance

150.000 Martindale cycles

## Flammability

BS EN 1021-1 (cigarette)  
BS EN 1021-2 (match)  
BS 5852: part 2 (Crib 5)  
BS 7176 Medium Hazard  
CAL TB 117  
EN 13501-1, B-s1, d0 (adhered)  
UNI 9175 & UNI 9175/FA1 Classe 1 IM

## Light fastness

6 (EN ISO 105-B02)

## Fastness to rubbing

wet: 5; dry: 5 (ISO 105-X12)

FR

Certifié conforme à la norme  
OEKO-TEX® 100

## Composition

100% Polyester

## Poids

250 g/m<sup>2</sup>

## Résistance à l'abrasion

150.000 Cycles de Martindale

## Inflammabilité

BS EN 1021-1 (cigarette)  
BS EN 1021-2 (allumette)  
BS 5852: part 2 (Crib 5)  
BS 7176 Medium Hazard  
CAL TB 117  
EN 13501-1, B-s1, d0 (collé)  
UNI 9175 & UNI 9175/FA1 Classe 1 IM

## Stabilité à la lumière

6 (EN ISO 105-B02)

## Résistance au frottement

humide: 5; sec: 5 (ISO 105-X12)

DE

Zertifiziert gemäß OEKO-TEX®  
Standard 100

## Zusammensetzung

100% Polyester

## Gewicht

250 g/m<sup>2</sup>

## Abriebfestigkeit

150.000 Martindale-Zyklen

## Entflammbarkeit

BS EN 1021-1 (Zigarette)  
BS EN 1021-2 (Streichholz)  
BS 5852: part 2 (Crib 5)  
BS 7176 Medium Hazard  
CAL TB 117  
EN 13501-1, B-s1, d0 (anhaftend)  
UNI 9175 & UNI 9175/FA1 Classe 1 IM

## Lichtgeschwindigkeit

6 (EN ISO 105-B02)

## Reibechtheit

nass: 5; trocken: 5 (ISO 105-X12)

!

Batch to batch variations in shade may occur within commercial tolerances.

!

Des variations de teinte d'un lot à l'autre peuvent se produire dans le cadre des tolérances commerciales.

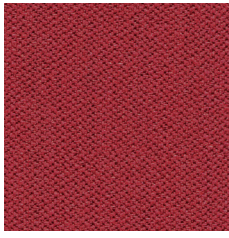
!

Innerhalb der handelsüblichen Toleranzen können Farbabweichungen von Charge zu Charge auftreten.

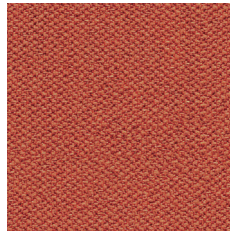
# Era

## Cat. 1

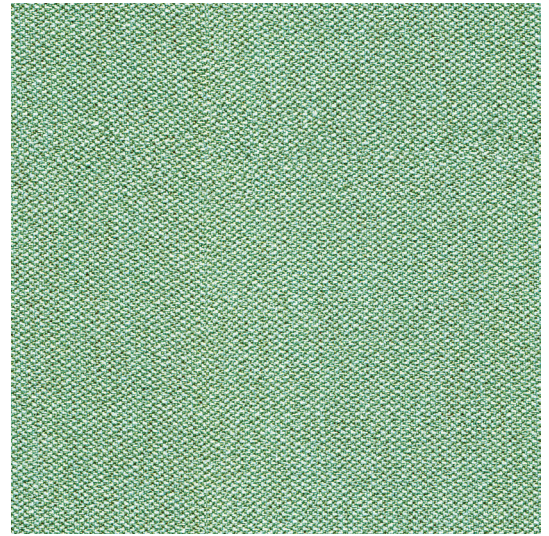
---



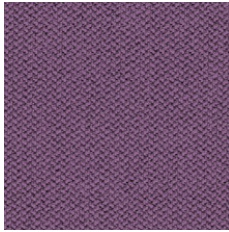
\* CSE28 GC28



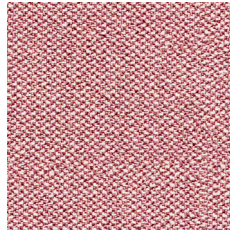
\* CSE29 GC29



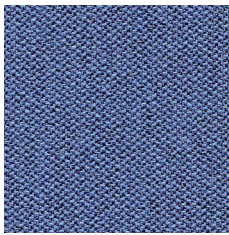
\* CSE36 GC36



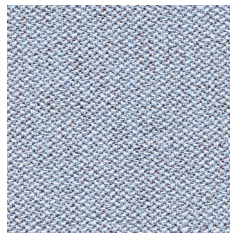
\* CSE09 GC09



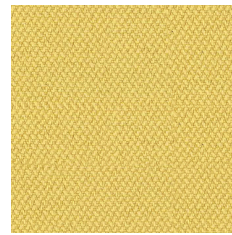
\* CSE24 GC24



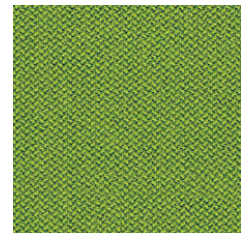
\* CSE42 GC42



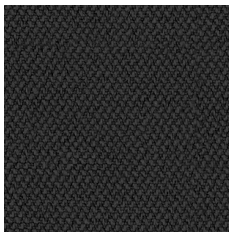
\* CSE39 GC39



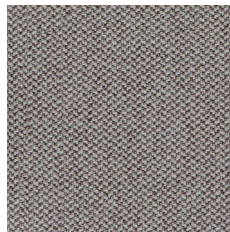
\* CSE03 GC03



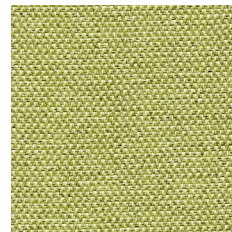
\* CSE16 GC16



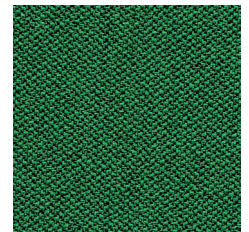
\* CSE14 GC14



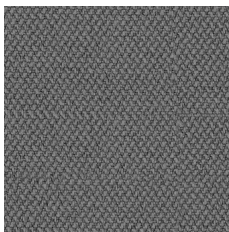
\* CSE02 GC02



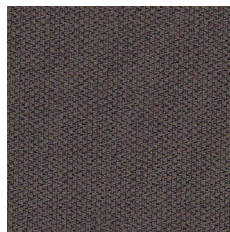
\* CSE34 GC34



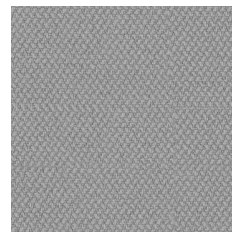
\* CSE35 GC35



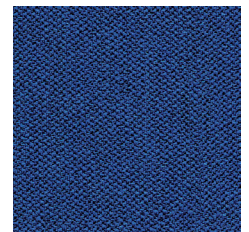
\* CSE13 GC13



\* CSE21 GC21



\* CSE11 GC11



\* CSE40 GC40



EN

Certified to OEKO-TEX® Standard 100  
Certified to Indoor Advantage™ “Gold”  
Non metallic dyestuffs

**Composition**  
100% Polyester

**Weight**  
320 g/m<sup>2</sup>

**Abrasion resistance**  
100.000 Martindale cycles

**Flammability**  
BS EN 1021-1 (cigarette)  
BS EN 1021-2 (match)  
BS 7176 Low Hazard  
EN 13501-1, B-s1, d0 (adhered)  
EN 13501-1, C-s1, d0 (wrapped rockwool)  
CAL TB 117

**Light fastness**  
5 (EN ISO 105-B02)

**Fastness to rubbing**  
wet: 4; dry: 4 (ISO 105-X12)

FR

Certifié conforme à la norme  
OEKO-TEX® 100  
Certifié Indoor Advantage™ Gold  
Colorants non métalliques

**Composition**  
100% Polyester

**Poids**  
320 g/m<sup>2</sup>

**Résistance à l'abrasion**  
100.000 Cycles Martindale

**Inflammabilité**  
BS EN 1021-1 (cigarette)  
BS EN 1021-2 (allumette)  
BS 7176 Low Hazard  
EN 13501-1, B-s1, d0 (collé)  
EN 13501-1, C-s1, d0 (recouvert de laine  
de roche)  
CAL TB 117

**Stabilité à la lumière**  
5 (EN ISO 105-B02)

**Résistance au frottement**  
humide: 4; sec: 4 (ISO 105-X12)

DE

Zertifiziert gemäß OEKO-TEX®  
Standard 100  
Zertifiziert gemäß Indoor  
Advantage™ „Gold”  
Nichtmetallische Farbstoffe

**Zusammensetzung**  
100% Polyester

**Gewicht**  
320 g/m<sup>2</sup>

**Abriebfestigkeit**  
100.000 Martindale-Zyklen

**Entflammbarkeit**  
BS EN 1021-1 (Zigarette)  
BS EN 1021-2 (Streichholz)  
BS 7176 Low Hazard  
EN 13501-1, B-s1, d0 (anhaftend)  
EN 13501-1, C-s1, d0 (umwickelte  
Mineralwolle)  
CAL TB 117

**Lichtgeschwindigkeit**  
5 (EN ISO 105-B02)

**Reibechtheit**  
nass: 4; trocken: 4 (ISO 105-X12)

!

Batch to batch variations in shade may occur within commercial tolerances.

!

Des variations de teinte d'un lot à l'autre peuvent se produire dans le cadre des tolérances commerciales.

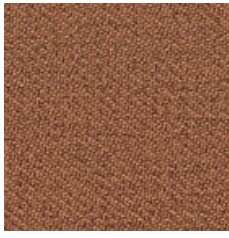
!

Innerhalb der handelsüblichen Toleranzen können Farbabweichungen von Charge zu Charge auftreten.

# Austea

## Cat. 2

---



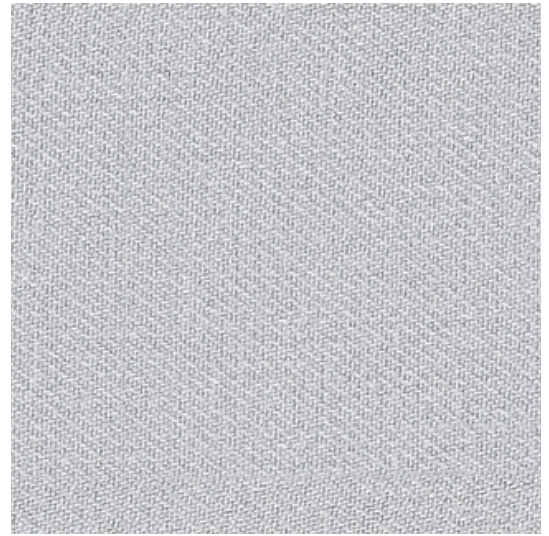
\*1/52

GT08



\*1/38

GT04



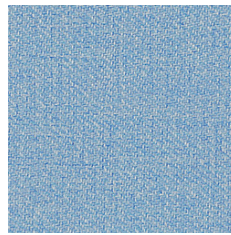
\*1/37

GT03



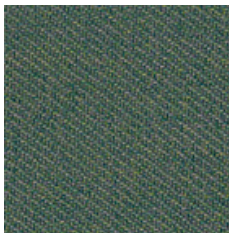
\*1/55

GT12



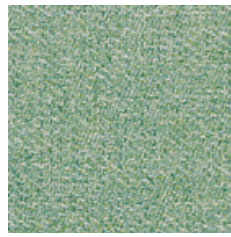
\*1/56

GT11



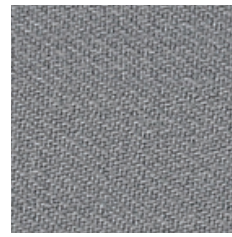
\*1/51

GT10



\*1/54

GT09



\*1/6

GT02



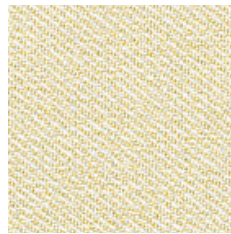
\*1/50

GT01



\*1/39

GT06



\*1/2

GT05



\*1/49

GT07



\*1/53

GT13



## For chairs and soft seating — EN

Certified to OEKO-TEX® Standard 100

### Composition

100% post-consumer recycled polyester

### Weight

420 g/m<sup>2</sup>

### Abrasion resistance

150.000 Martindale cycles

### Flammability

BS EN 1021-1 (cigarette)

BS EN 1021-2 (match)

BS 5852, Crib 5

### Light fastness

6 (EN ISO 105-B02)

### Fastness to rubbing

wet: 4-5; dry: 5 (ISO 105-X12)

## Pour sièges et sièges Lounge — FR

Certifié conforme à la norme OEKO-TEX® 100

### Composition

Polyester recyclé 100 % après utilisation

### Poids

420 g/m<sup>2</sup>

### Résistance à l'abrasion

150.000 Cycles Martindale

### Inflammabilité

BS EN 1021-1 (cigarette)

BS EN 1021- 2 (allumette)

BS 5852, Crib 5

### Stabilité à la lumière

6 (EN ISO 105-B02)

### Résistance au frottement

humide: 4-5; sec: 5 (ISO 105-X12)

## Für Stühle und weiches Sitzen — DE

Zertifiziert gemäß OEKO-TEX® Standard 100

### Zusammensetzung

Nach der Nutzung 100 % recyceltes Polyester

### Gewicht

420 g/m<sup>2</sup>

### Abriebfestigkeit

150.000 Martindale-Zyklen

### Entflammbarkeit

BS EN 1021-1 (Zigarette)

BS EN 1021-2 (Streichholz)

BS 5852, Crib 5

### Lichtgeschwindigkeit

6 (EN ISO 105-B02)

### Reibechtheit

nass: 4-5; trocken: 5 (ISO 105-X12)

## For screens — EN

Certified to OEKO-TEX® Standard 100

### Composition

100% post-consumer recycled polyester

### Weight

300 g/m<sup>2</sup>

### Abrasion resistance

70.000 Martindale cycles

### Flammability

BS EN 1021-1 (cigarette)

CAL TB 117

### Light fastness

6 (EN ISO 105-B02)

### Fastness to rubbing

wet: 4-5; dry: 5 (ISO 105-X12)

## Pour écrans — FR

Certifié conforme à la norme OEKO-TEX® 100

### Composition

Polyester recyclé 100 % après utilisation

### Poids

300 g/m<sup>2</sup>

### Résistance à l'abrasion

70.000 Cycles Martindale

### Inflammabilité

BS EN 1021-1 (cigarette)

CAL TB 117

### Stabilité à la lumière

6 (EN ISO 105-B02)

### Résistance au frottement

humide: 4-5; sec: 5 (ISO 105-X12)

## Für Abschirmungen — DE

Zertifiziert gemäß OEKO-TEX® Standard 100

### Zusammensetzung

Nach der Nutzung 100 % recyceltes Polyester

### Gewicht

300 g/m<sup>2</sup>

### Abriebfestigkeit

70.000 Martindale-Zyklen

### Entflammbarkeit

BS EN 1021-1 (Zigarette)

CAL TB 117

### Lichtgeschwindigkeit

6 (EN ISO 105-B02)

### Reibechtheit

nass: 4-5; trocken: 5 (ISO 105-X12)

! —————  
Batch to batch variations in shade may occur within commercial tolerances.

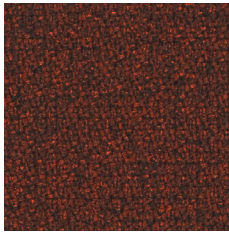
! —————  
Des variations de teinte d'un lot à l'autre peuvent se produire dans le cadre des tolérances commerciales.

! —————  
Innerhalb der handelsüblichen Toleranzen können Farbabweichungen von Charge zu Charge auftreten.

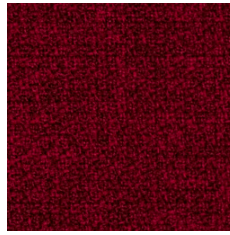
# Step | Step Melange

Cat. 2 | Cat.3

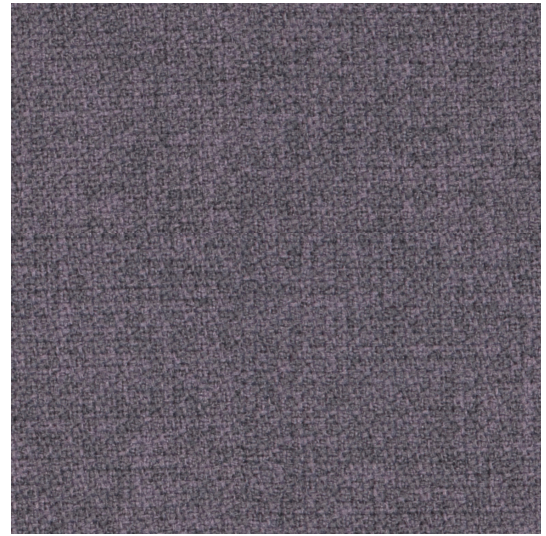
---



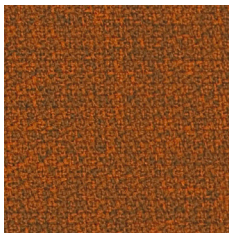
\*63075 GL24



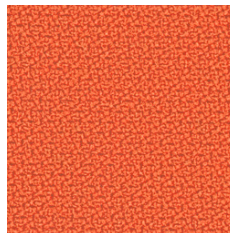
\*64013 GL18



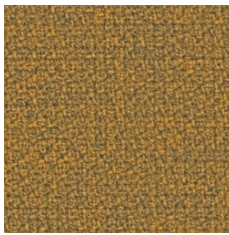
\*65093 GL83



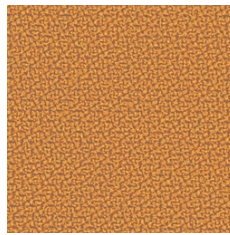
\*63082 GL10



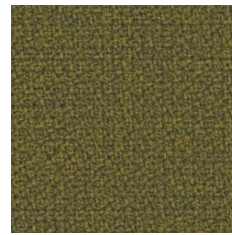
\*63082 GL11



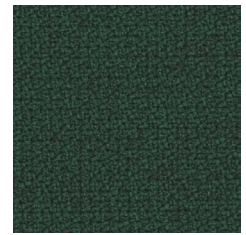
\*62057 GL16



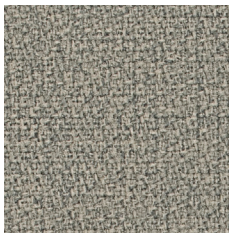
\*62057 GL17



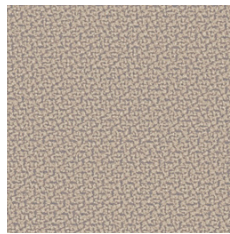
\*68119 GL08



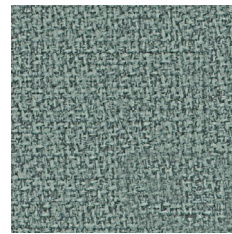
\*68161 GL26



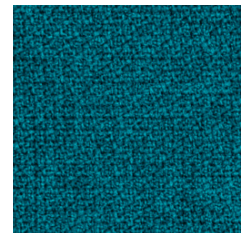
\*61104 GL70



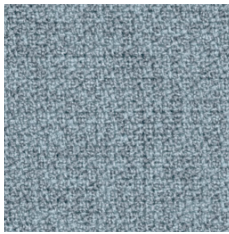
\*61149 GL15



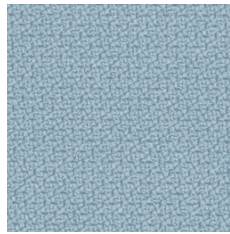
\*68118 GL50



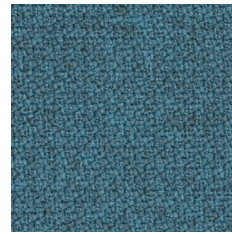
\*67007 GL02



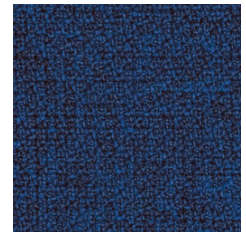
\*67004 GL06



\*67004 GL07



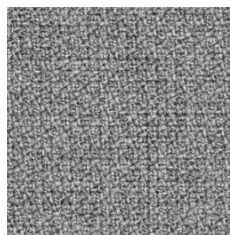
\*67072 GL28



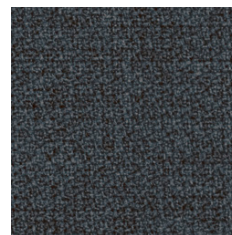
\*66149 GL04



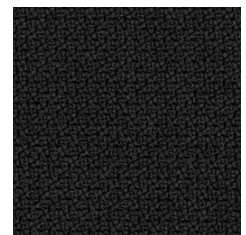
\*60011 GL34



\*60004 GL12



\*66019 GL20



\*60999 GL01

# Step | Step Melange



EN

Certified to OEKO-TEX® Standard 100

Certified to the EU Ecolabel

## Composition

100% Trevira CS® Flame Retardant Polyester

## Weight

470 g/m<sup>2</sup>

## Abrasion resistance

100.000 Martindale cycles

## Flammability

BS EN 1021-1 (cigarette)

BS EN 1021-2 (match)

BS 5852: part 1

BS 5852: part 2 (Crib 5)

BS 7176 Medium Hazard

UNI 9175 & UNI 9175/FA1 Classe 1 IM

DIN 4102 B1

NFP-P-92-503-512 M1

ÖNORM B 3825-B1-3800-Q1 UK

AM 18 - NF D 60-013 (only for fabric)

CA TB 117-2013

DIN EN 13501-1 B-s1, d0

## Light fastness

5-7 (EN ISO 105-B02)

## Fastness to rubbing

wet: 4-5; dry: 4-5 (ISO 105-X12)

FR

Certifié conforme à la norme OEKO-TEX® 100

Certifié conforme à l'écolabel européen

## Composition

100% Trevira CS® Polyester Inflammable

## Poids

470 g/m<sup>2</sup>

## Résistance à l'abrasion

100.000 Cycles de Martindale

## Inflammabilité

BS EN 1021-1 (cigarette)

BS EN 1021- 2 (allumette)

BS 5852: part 1

BS 5852: part 2 (Crib 5)

BS 7176 Medium Hazard

UNI 9175 & UNI 9175/FA1 Classe 1 IM

DIN 4102 B1

NFP-P-92-503-512 M1

ÖNORM B 3825-B1-3800-Q1 UK

AM 18 - NF D 60-013 (uniquement pour les tissus)

CA TB 117-2013

DIN EN 13501-1 B-s1, d0

## Stabilité à la lumière

5-7 (EN ISO 105-B02)

## Résistance au frottement

humide: 4-5; sec: 4-5 (ISO 105-X12)

DE

Zertifiziert gemäß OEKO-TEX® Standard 100

Zertifiziert nach EU Ecolabel

## Zusammensetzung

100% Trevira CS® Flammhemmendes Polyester

## Gewicht

470 g/m<sup>2</sup>

## Abriebfestigkeit

100.000 Martindale-Zyklen

## Entflammbarkeit

BS EN 1021-1 (Zigarette)

BS EN 1021-2 (Streichholz)

BS 5852: part 1

BS 5852: part 2 (Crib 5)

BS 7176 Medium Hazard

UNI 9175 & UNI 9175/FA1 Classe 1 IM

DIN 4102 B1

NFP-P-92-503-512 M1

ÖNORM B 3825-B1-3800-Q1 UK

AM 18 - NF D 60-013 (nur für Stoff)

CA TB 117-2013

DIN EN 13501-1 B-s1, d0

## Lichtgeschwindigkeit

5-7 (EN ISO 105-B02)

## Reibechtheit

nass: 4-5; trocken: 4-5 (ISO 105-X12)

!

Cat. 2 applies to seating category products and Cat. 3 applies to screens and panels.

!

Batch to batch variations in shade may occur within commercial tolerances.

!

La cat. 2 s'applique aux produits de la catégorie sièges et la cat. 3 s'applique aux écrans et aux panneaux.

!

Des variations de teinte d'un lot à l'autre peuvent se produire dans le cadre des tolérances commerciales.

!

Kat. 2 gilt für Produkte der Kategorie Sitzmöbel und Kat. 3 gilt für Trennwände und Platten.

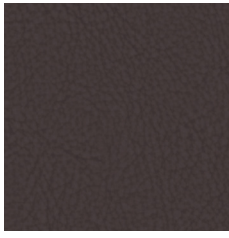
!

Innerhalb der handelsüblichen Toleranzen können Farbabweichungen von Charge zu Charge auftreten.

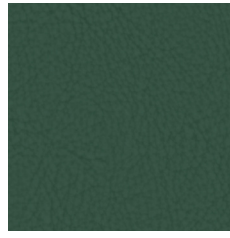
# Valencia C5

Cat. 3

---



\*238-0020 DU1



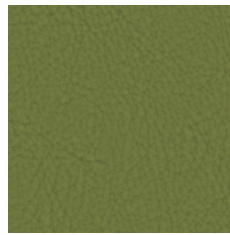
\*238-5069 DU2



\*238-0035 DJ2



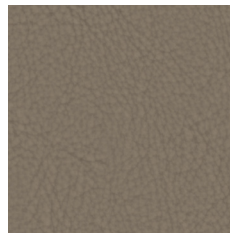
\*107-2074 DU5



\*238-5001 DU3



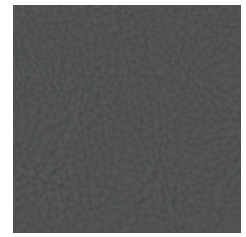
\*238-3067 DU4



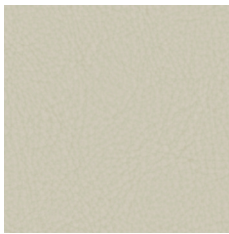
\*238-0034 DT7



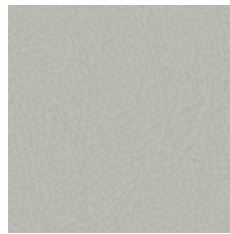
\*238-2115 DT9



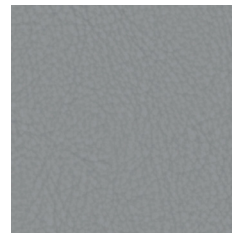
\*238-4003 DT3



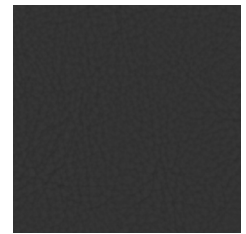
\*238-1048 DS6



\*238-4040 DT5



\*238-4045 DT4



\*238-9035 DT2

# Valencia C5

EN

## Composition

Vinyl / Urethane Topcoat

## Weight

665 g/m<sup>2</sup>

## Abrasion resistance

>300.000 Martindale cycles

## Flammability

BS EN 1021-1 (cigarette)  
BS EN 1021-2 (match)  
ÖNORM A 3800-1, Q1  
ÖNORM B 3825, Group 1  
DIN 4102, B2  
UNE 23.727-90, 1R/M.2  
NF D 60-013  
NF P 92-503, M2  
UNI 9175 Classe 1 IM  
BS 5852: part 2 (Crib 5)  
BS 7176, Medium Hazard  
CAL TB 117-2013  
NEPA 260, Class 1

## Light fastness

≥7-8 (EN ISO 105-B02)

## Fastness to rubbing

wet: 5; dry: 5 (ISO 105-X12)

FR

## Composition

Vinyl / Urethane Topcoat

## Poids

665 g/m<sup>2</sup>

## Résistance à l'abrasion

>300.000 Cycles Martindale

## Inflammabilité

BS EN 1021-1 (cigarette)  
BS EN 1021-2 (match)  
ÖNORM A 3800-1, Q1  
ÖNORM B 3825, Group 1  
DIN 4102, B2  
UNE 23.727-90, 1R/M.2  
NF D 60-013  
NF P 92-503, M2  
UNI 9175 Classe 1 IM  
BS 5852: part 2 (Crib 5)  
BS 7176, Medium Hazard  
CAL TB 117-2013  
NEPA 260, Class 1

## Stabilité à la lumière

≥7-8 (EN ISO 105-B02)

## Résistance au frottement

humide: 5; sec: 5 (ISO 105-X12)

DE

## Zusammensetzung

Vinyl / Urethane Topcoat

## Gewicht

665 g/m<sup>2</sup>

## Abriebfestigkeit

>300.000 Martindale-Zyklen

## Entflammbarkeit

BS EN 1021-1 (cigarette)  
BS EN 1021-2 (match)  
ÖNORM A 3800-1, Q1  
ÖNORM B 3825, Group 1  
DIN 4102, B2  
UNE 23.727-90, 1R/M.2  
NF D 60-013  
NF P 92-503, M2  
UNI 9175 Classe 1 IM  
BS 5852: part 2 (Crib 5)  
BS 7176, Medium Hazard  
CAL TB 117-2013  
NEPA 260, Class 1

## Lichtgeschwindigkeit

≥7-8 (EN ISO 105-B02)

## Reibechtheit

nass: 5; trocken: 5 (ISO 105-X12)

! Batch to batch variations in shade may occur within commercial tolerances.

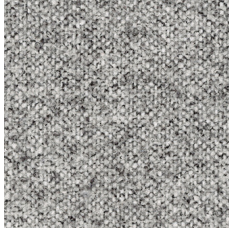
! Des variations de teinte d'un lot à l'autre peuvent se produire dans le cadre des tolérances commerciales.

! Innerhalb der handelsüblichen Toleranzen können Farbabweichungen von Charge zu Charge auftreten.

# Dream

## Cat. 3

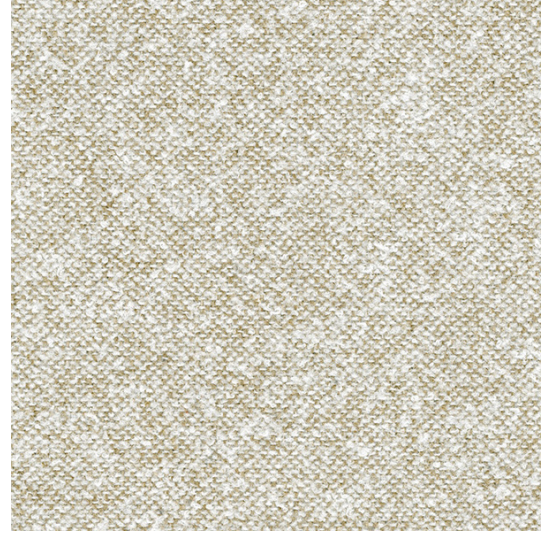
---



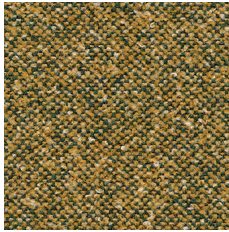
\*9132 GQ02



\*9182 GQ03



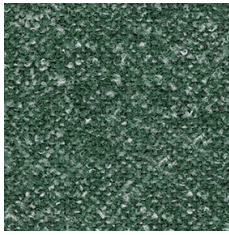
\*9101 GQ04



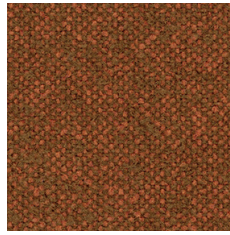
\*9705 GQ06



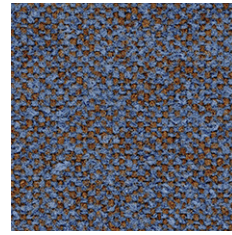
\*1014 GQ05



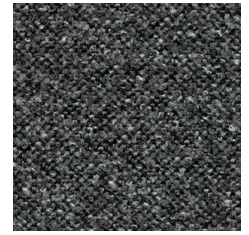
\*9728 GQ07



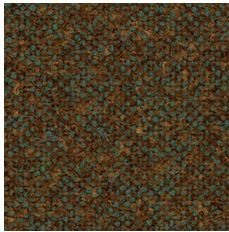
\*9421 GQ10



\*9229 GQ11



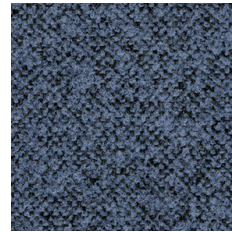
\*9820 GQ01



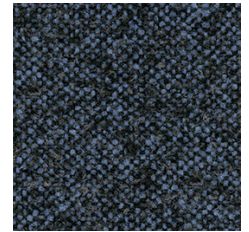
\*9702 GQ08



\*9202 GQ09



\*9829 GQ12



\*9693 GQ13

# Dream



## For lounge and soft furniture, and visitor chairs — EN

Certified to OEKO-TEX® Standard 100

### Composition

100% mass-dyed polyester

### Weight

375 g/m<sup>2</sup>

### Abrasion resistance

100.000 Martindale cycles

### Flammability

BS EN 1021-1 (cigarette)

BS EN 1021-2 (match)

BS 7176 Low Hazard

CAL TB 117:2013

UNI 9175 Classe 1 IM

### Light fastness

7 (EN ISO 105-B02)

### Fastness to rubbing

wet: 4-5; dry: 4-5 (EN ISO 105-X12)

## Pour les Sièges Lounge et les Chaises visiteurs — FR

Certifié conforme à la norme OEKO-TEX® 100

### Composition

100% polyester teint dans la masse

### Poids

375 g/m<sup>2</sup>

### Résistance à l'abrasion

100.000 Cycles Martindale

### Inflammabilité

BS EN 1021-1 (cigarette)

BS EN 1021-2 (allumette)

BS 7176 Low Hazard

CAL TB 117:2013

UNI 9175 Classe 1 IM

### Stabilité à la lumière

7 (EN ISO 105-B02)

### Résistance au frottement

humide: 4-5; sec: 4-5 (ISO 105-X12)

## Für Lounge- und Polstermöbel - DE sowie Besucherstühle

Zertifiziert gemäß OEKO-TEX® Standard 100

### Zusammensetzung

100% Massengefärbtes Polyester

### Gewicht

375 g/m<sup>2</sup>

### Abriebfestigkeit

100.000 Martindale-Zyklen

### Entflammbarkeit

BS EN 1021-1 (Zigarette)

BS EN 1021-2 (Streichholz)

BS 7176 Low Hazard

CAL TB 117:2013

UNI 9175 Classe 1 IM

### Lichtgeschwindigkeit

7 (EN ISO 105-B02)

### Reibechtheit

nass: 4-5; trocken: 4-5 (ISO 105-X12)

! Batch to batch variations in shade may occur within commercial tolerances.

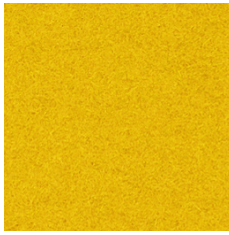
! Des variations de teinte d'un lot à l'autre peuvent se produire dans le cadre des tolérances commerciales.

! Innerhalb der handelsüblichen Toleranzen können Farbabweichungen von Charge zu Charge auftreten.

# Velito | Velito Presto

## Cat. 3

---



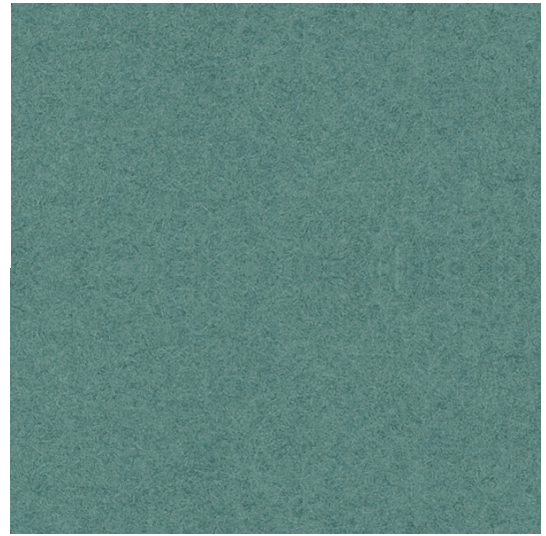
\*0512

GV21



\*0540

GV14



\*0537

GV06



\*0513

GV13



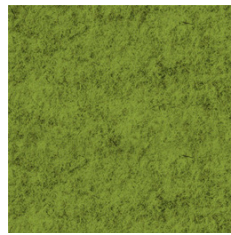
\*0570

GV04



\*0535

GV05



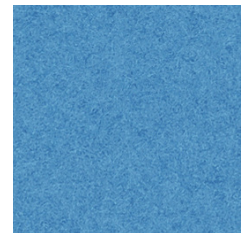
\*0527

GV03



\*0549

GV20



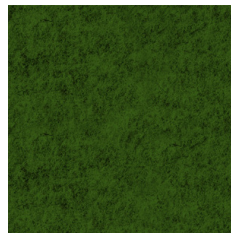
\*0538

GV01



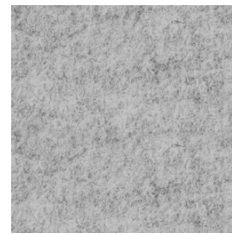
\*0530

GV15



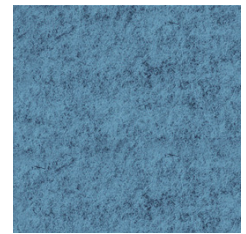
\*0597

GV00



\*0556

GV08



\*0548

GV09



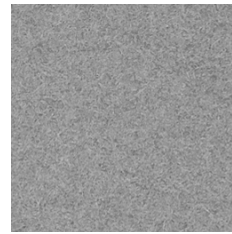
\*0511

GV22



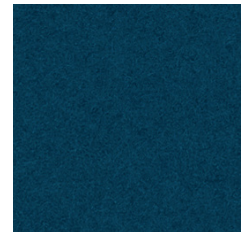
\*0560

GV18



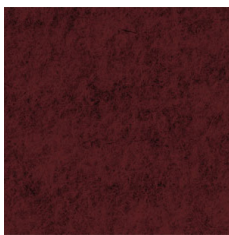
\*02130

GV02



\*0516

GV16



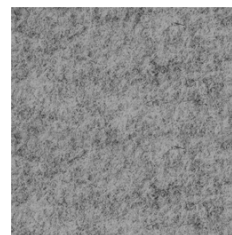
\*0510

GV07



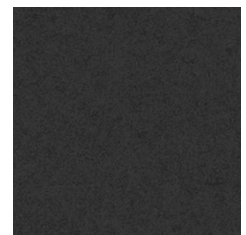
\*02128

GV19



\*0506

GV12



\*0599

GV11

# Velito



EN

Certified to OEKO-TEX® Standard 100

## Composition

88% Wool, 12% Polyamide

## Weight

400 g/m<sup>2</sup>

## Abrasion resistance

120.000 Martindale cycles

## Flammability

BS EN 1021-1 (cigarette)

BS EN 1021-2 (match)

## Light fastness

6 (EN ISO 105-B02)

## Fastness to rubbing

wet: 5; dry: 5 (ISO 105-X12)

FR

Certifié conforme à la norme  
OEKO-TEX® 100

## Composition

88% Laine, 12% Polyamide

## Poids

400 g/m<sup>2</sup>

## Résistance à l'abrasion

120.000 Cycles Martindale

## Inflammabilité

BS EN 1021-1 (cigarette)

BS EN 1021-2 (allumette)

## Stabilité à la lumière

6 (EN ISO 105-B02)

## Résistance au frottement

humide: 5; sec: 5 (ISO 105-X12)

DE

Zertifiziert gemäß OEKO-TEX®  
Standard 100

## Zusammensetzung

88% Wolle, 12% Polyamid

## Gewicht

400 g/m<sup>2</sup>

## Abriebfestigkeit

120.000 Martindale-Zyklen

## Entflammbarkeit

BS EN 1021-1 (Zigarette)

BS EN 1021-2 (Streichholz)

## Lichtgeschwindigkeit

6 (EN ISO 105-B02)

## Reibechtheit

nass: 5; trocken: 5 (ISO 105-X12)

# Velito Presto



EN

Certified to OEKO-TEX® Standard 100

## Composition

88% Wool, 12% Polyamide

## Weight

315 g/m<sup>2</sup>

## Flammability

BS EN 1021-1 (cigarette)

BS EN 1021-2 (match)

## Light fastness

5-6 (EN ISO 105-B02)

## Fastness to rubbing

wet: 4-5; dry: 4-5 (ISO 105-X12)

FR

Certifié conforme à la norme  
OEKO-TEX® 100

## Composition

88% Wool, 12% Polyamide

## Poids

315 g/m<sup>2</sup>

## Inflammabilité

BS EN 1021-1 (cigarette)

BS EN 1021-2 (allumette)

## Stabilité à la lumière

5-6 (EN ISO 105-B02)

## Résistance au frottement

humide: 4-5; sec: 4-5 (ISO 105-X12)

DE

Zertifiziert gemäß OEKO-TEX®  
Standard 100

## Zusammensetzung

88% Wolle, 12% Polyamid

## Gewicht

315 g/m<sup>2</sup>

## Entflammbarkeit

BS EN 1021-1 (Zigarette)

BS EN 1021-2 (Streichholz)

## Lichtgeschwindigkeit

5-6 (EN ISO 105-B02)

## Reibechtheit

nass: 4-5; trocken: 4-5 (ISO 105-X12)

! Batch to batch variations in shade may occur within commercial tolerances.

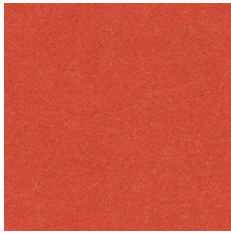
! Des variations de teinte d'un lot à l'autre peuvent se produire dans le cadre des tolérances commerciales.

! Innerhalb der handelsüblichen Toleranzen können Farbabweichungen von Charge zu Charge auftreten.

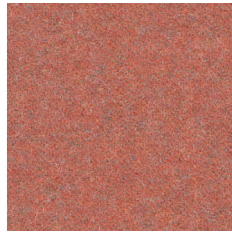
# Synergy

## Cat. 3

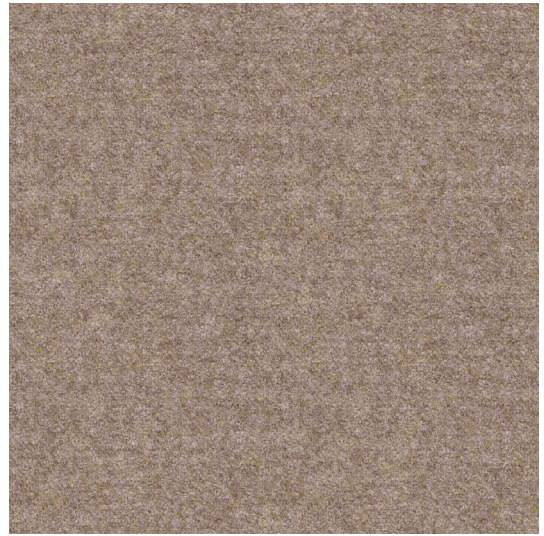
---



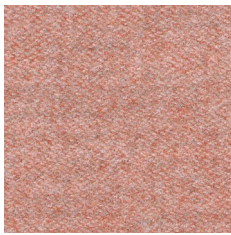
\*LDS84 GS84



\*LDS73 GS73



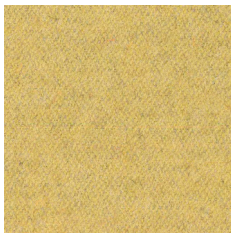
\*LDS32 GS32



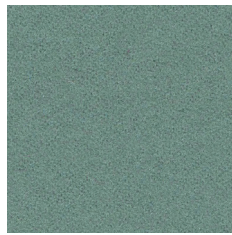
\*LDS74 GS74



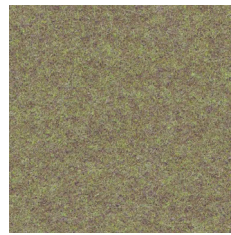
\*LDS37 GS37



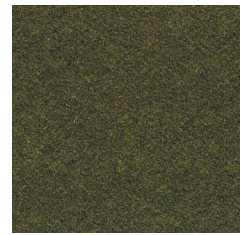
\*LDS45 GS45



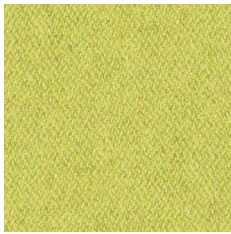
\*LDS49 GS49



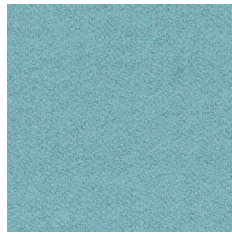
\*LDS48 GS48



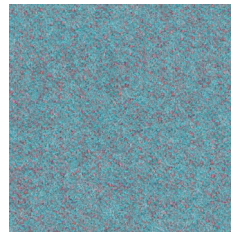
\*LDS42 GS42



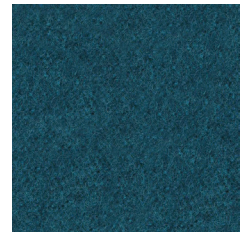
\*LDS46 GS46



\*LDS55 GS55



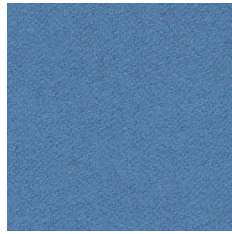
\*LDS56 GS56



\*LDS59 GS59



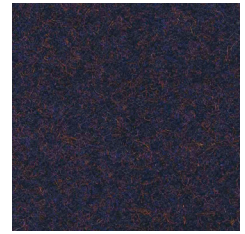
\*LDS08 GS08



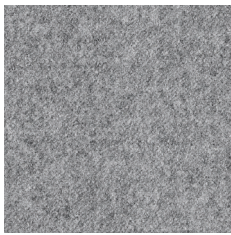
\*LDS63 GS63



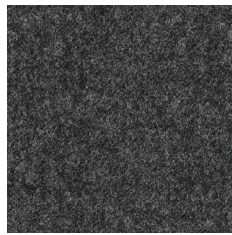
\*LDS62 GS62



\*LDS61 GS61



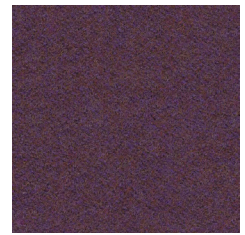
\*LDS16 GS16



\*LDS17 GS17



\*LDS27 GS27



\*LDS70 GS70



EN

Certified to the EU Ecolabel

Certified to Indoor Advantage™ "Gold"

### Composition

95% Virgin Wool, 5% Polyamide

### Weight

400 g/m<sup>2</sup>

### Abrasion resistance

100.000 Martindale cycles

### Flammability

BS EN 1021-1 (cigarette)  
BS EN 1021-2 (match)  
BS 7176 Low Hazard  
UNI 9175 Classe 1 IM  
EN 13501-1, D-s1, d0 (adhered)  
CAL TB 117  
ÖNORM B 3825  
ÖNORM A 3800-1

### Light fastness

5 (EN ISO 105-B02)

### Fastness to rubbing

wet: 4; dry: 4 (ISO 105-X12)

FR

Certifié conforme à l'écolabel européen

Certifié Indoor Advantage™ Gold

### Composition

95% Laine Vierge, 5% Polyamid

### Poids

400 g/m<sup>2</sup>

### Résistance à l'abrasion

100.000 Cycles Martindale

### Inflammabilité

BS EN 1021-1 (cigarette)  
BS EN 1021-2 (allumette)  
BS 7176 Low Hazard  
UNI 9175 Classe 1 IM  
EN 13501-1, D-s1, d0 (collé)  
CAL TB 117  
ÖNORM B 3825  
ÖNORM A 3800-1

### Stabilité à la lumière

5 (EN ISO 105-B02)

### Résistance au frottement

humide: 4; sec: 4 (ISO 105-X12)

DE

Zertifiziert nach EU Ecolabel

Zertifiziert gemäß Indoor Advantage™ „Gold“

### Zusammensetzung

95% Schurwolle, 5% Polyamid

### Gewicht

400 g/m<sup>2</sup>

### Abriebfestigkeit

100.000 Martindale-Zyklen

### Entflammbarkeit

BS EN 1021-1 (Zigarette)  
BS EN 1021-2 (Streichholz)  
BS 7176 Low Hazard  
UNI 9175 Classe 1 IM  
EN 13501-1, D-s1, d0 (anhaftend)  
CAL TB 117  
ÖNORM B 3825  
ÖNORM A 3800-1

### Lichtgeschwindigkeit

5 (EN ISO 105-B02)

### Reibechtheit

nass: 4; trocken: 4 (ISO 105-X12)

! Batch to batch variations in shade may occur within commercial tolerances.

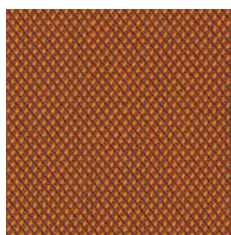
! Des variations de teinte d'un lot à l'autre peuvent se produire dans le cadre des tolérances commerciales.

! Innerhalb der handelsüblichen Toleranzen können Farbabweichungen von Charge zu Charge auftreten.

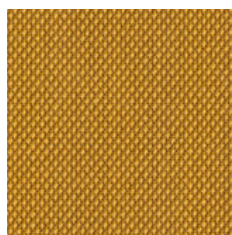
# Steelcut Trio 3

Cat. 4

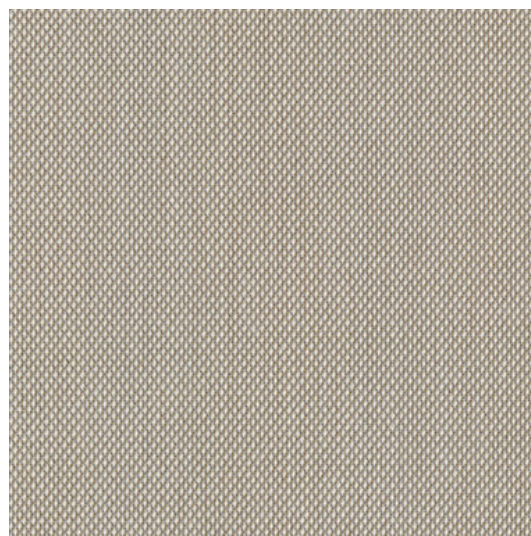
---



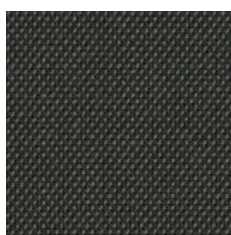
\*0576 GD04



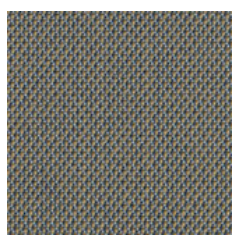
\*0453 GD03



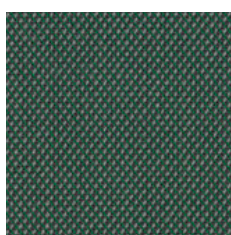
\*0213 GD01



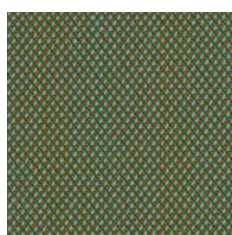
\*0383 GD09



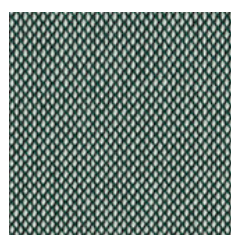
\*0253 GD02



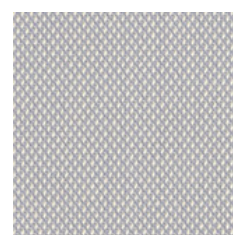
\*0966 GD07



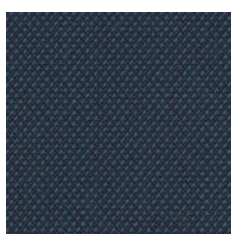
\*0946 GD08



\*0916 GD06



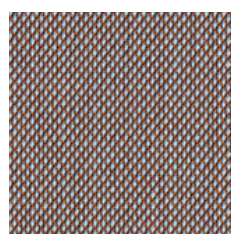
\*0105 GD13



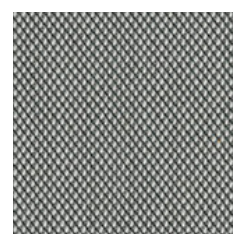
\*0796 GD10



\*0713 GD11



\*0416 GD05



\*0133 GD12

# Steelcut Trio 3



EN

**Composition:**

90% new wool, worsted, 10% nylon

**Weight:**

550 g/m<sup>2</sup>

**Abrasion resistance:**

100.000 Martindale cycles

**Flammability:**

BS 5852: part 1  
BS 7176 Low Hazard  
EN 1021-1  
EN 1021-2  
NF D 60-013  
NFPA 260  
ÖNORM B 3825  
ÖNORM A 3800-1, Q1  
UNI 9175 11M  
CAL TB 117-2013

**Light fastness:**

5-7 (EN ISO 105-B02)

**Fastness to rubbing:**

wet: 3-5; dry: 4-5 (EN ISO 105-X12)

**Sound absorption:**

ISO 11654, aw=0.70, class C

FR

**Coposition**

95% Laine Vierge, 5% Polyamid

**Poids**

550 g/m<sup>2</sup>

**Résistance à l'abrasion**

100.000 Cycles Martindale

**Inflammabilité**

BS 5852: part 1  
BS 7176 Low Hazard  
EN 1021-1  
EN 1021-2  
NF D 60-013  
NFPA 260  
ÖNORM B 3825  
ÖNORM A 3800-1, Q1  
UNI 9175 11M  
CAL TB 117-2013

**Stabilité à la lumière**

5-7 (EN ISO 105-B02)

**Résistance au frottement**

humide: 3-5, sec: 4-5 (ISO 105 - X12)

**Absorption acoustique**

ISO 11654, aw=0,70, classe C

DE

**Zusammensetzung**

90% Schurwolle, Kammgarn 10% Nylon

**Gewicht**

550 g/m<sup>2</sup>

**Abriebfestigkeit**

100.000 Martindale-Zyklen

**Entflammbarkeit**

BS 5852: part 1  
BS 7176 Low Hazard  
EN 1021-1  
EN 1021-2  
NF D 60-013  
NFPA 260  
ÖNORM B 3825  
ÖNORM A 3800-1, Q1  
UNI 9175 11M  
CAL TB 117-2013

**Lichtgeschwindigkeit**

5-7 (EN ISO 105-B02)

**Reibechtheit**

wet: 3-5; dry: 4-5 (EN ISO 105-X12)

**Absorption**

ISO 11654, aw=0.70, Klasse C

! Batch to batch variations in shade may occur within commercial tolerances.

! Des variations de teinte d'un lot à l'autre peuvent se produire dans le cadre des tolérances commerciales.

! Innerhalb der handelsüblichen Toleranzen können Farbabweichungen von Charge zu Charge auftreten.

# DNN

## Cat. 5

---



DB02



DB03



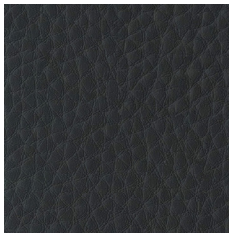
DB04



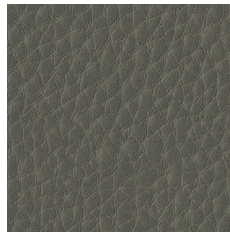
DA04



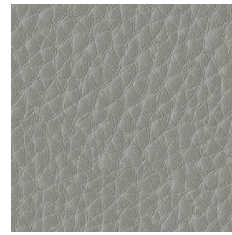
DB05



DA05



DB01



DB07



DB06



EN

**Composition**

Real leather

**Thickness**

0,9 - 1,1 mm

**Flexing endurance**

50.000 cycles

**Light fastness**

≥4 (EN ISO 105-B02)

**Rubbing fastness, dry, 500 rubbings**

4 (EN ISO 11640/41)

**Rubbing fastness, wet, 250 rubbings**

4 (EN ISO 11640/41)

**Rubbing fastness, perspiration, 80 rubbings**

4 (EN ISO 11640/41)

**Adhesion of finish**

3 N/cm (EN ISO 11644)

**Tear strength**

≥40 N (EN ISO 3377-2)

**Dry flexing resistance**

50.000 (EN ISO 5402-1)

**PH value**

≥3,2 (DIN EN ISO 4045)

**Flammability**

BS EN 1021-1 (cigarette)

BS EN 1021-2 (match)

BS 5852: part 1

CAL TB 117

FR

**Composition**

Cuir véritable

**Épaisseur**

0,9 - 1,1 mm

**Résistance au pliage**

50.000 cycles

**Stabilité à la lumière**

≥4 (EN ISO 105-B02)

**Résistance au frottement, sec, 500 frottements**

4 (EN ISO 11640/41)

**Résistance au frottement, humide, 250 frottements**

4 (EN ISO 11640/41)

**Résistance au frottement, sueur, 80 frottements**

4 (EN ISO 11640/41)

**Adhérence de la finition**

3 N/cm (EN ISO 11644)

**Résistance à la déchirure**

≥40 N (EN ISO 3377-2)

**Résistance au pliage à sec**

50.000 (EN ISO 5402-1)

**Valeur du PH**

≥3,2 (DIN EN ISO 4045)

**Inflammabilité**

BS EN 1021-1 (cigarette)

BS EN 1021-2 (allumette)

BS 5852: part 1

CAL TB 117

DE

**Zusammensetzung**

Echtleder

**Stärke**

0,9 - 1,1 mm

**Biegedauerfestigkeit**

50.000 Zyklen

**Lichtgeschwindigkeit**

≥4 (EN ISO 105-B02)

**Reibbeständigkeit, trocken, 500 Reibungen**

4 (EN ISO 11640/41)

**Reibbeständigkeit, nass, 250 Reibungen**

4 (EN ISO 11640/41)

**Reibbeständigkeit, Schweiß, 80 Reibungen**

4 (EN ISO 11640/41)

**Haftung der Beschichtung**

3 N/cm (EN ISO 11644)

**Reißfestigkeit**

≥40 N (EN ISO 3377-2)

**Trockene Biegefestigkeit**

50.000 (EN ISO 5402-1)

**PH-Wert**

≥3,2 (DIN EN ISO 4045)

**Entflammbarkeit**

BS EN 1021-1 (Zigarette)

BS EN 1021-2 (Streichholz)

BS 5852: part 1

CAL TB 117

! Batch to batch variations in shade may occur within commercial tolerances.

! Des variations de teinte d'un lot à l'autre peuvent se produire dans le cadre des tolérances commerciales.

! Innerhalb der handelsüblichen Toleranzen können Farbabweichungen von Charge zu Charge auftreten.